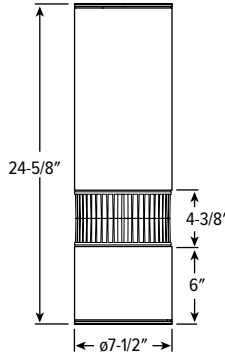


HC7 LED 7.5" High Output Cylinder



CATALOG #: _____

TYPE: _____

PROJECT: _____

FEATURES

- 11,000+ delivered lumens
- High-output illumination for 20' to 60' mounting heights
- Available in six standard finishes for high-end design
- Self-flanged aluminum reflector prevents light leaks and is available in assorted colors.
- Wide, medium, and narrow distributions to tailor performance to the application.
- Optional 90 CRI provides long-life alternative to tungsten halogen.
- Passive aluminum heat sink for reliable thermal management.
- Multiple driver options to adapt to a variety of control systems.
- Multi-channel LED board allows for stepped switching configurations.
- All-aluminum cylinder components dissipate heat for cooler operation.
- Made Right Here® in the USA

SPECIFICATIONS

- **HOUSING** – Extruded aluminum.
- **FINISH** – Polyester powder coat bonded to phosphate-free, multi-stage pretreated metal. All parts painted after fabrication to facilitate installation, increase efficiency, and inhibit corrosion.
- **ELECTRICAL** – High power LEDs on aluminum circuit board. L70 >60,000 hours. 40°C maximum ambient operating temperature.
- **MOUNTING** – Surface, cable, pendant or wall mount. Indoor applications only. Max weight approximately 20 lbs. Max weight with SD transformer and 347V approximately 26 lbs.
- **LISTINGS** –
 - cETLus conforms to UL STD 1598 and UL STD 8750. Certified to CAN/CSA STD C22.2 No. 250.0. Suitable for damp locations.
- **WARRANTY** – 5-year limited warranty, see hew.com/warranty.

ORDERING EXAMPLE: HC7 - L102/835 - BLK - CS/M - OPTIONS - CM - DIM - UNV

ORDERING INFO

SERIES	LUMENS ^[1]	CRI/CCT	HOUSING FINISH ^[2]	REFLECTOR FINISH	DISTRIBUTION
HC7	80 CRI	80 CRI	ALUM Satin silver aluminum	CS Clear semi-specular (standard)	W 70° Wide
	L81 8,100lm	830 3000K	BLK Textured black	SPC Clear specular	M 60° Medium
	L102 10,200lm	835 3500K	BRZ Textured bronze	CG Champagne gold	N 40° Narrow
	90 CRI	840 4000K	NKL Textured nickel	GD Gold	
	L65 6,500lm	90 CRI ^[3]	SLV Textured silver	PW Pewter	
	L81 8,100lm	927 2700K	WHT Textured white	SG Satin-glow	
	930 3000K		STR Straw		
			WT Wheat		
			WH Painted white reflector, textured		

OPTIONS ^[4]	MOUNTING ^[5]	DRIVER ^[6]	VOLTAGE
LAD Acrylic luminous disk	CM Adjustable aircraft cable mount, ^[7] Example: 24" cable = CM24 .	DRV Non-dimming driver	120 120V
LADO Acrylic luminous disk open	PM Pendant mount ^[8] Example: 24" pendant = PM24 .	DIM Dimming driver	277 277V
LAR Acrylic luminous ring	QM Quick installation canopy surface mount	SD Driver pre-wired for stepped dimming	UNV 120-277V
	WM Wall mount		347 347V ^[9]

NOTES

- ¹ Lumen output based on W distribution and CS reflector finish, 3500K/80CRI. Actual lumens may vary +/-5%, see page 2 for FIXTURE PERFORMANCE DATA. Additional lumen package available, see options
- ² See page 3 for FINISH OPTIONS.
- ³ Extended lead times may apply. Consult factory for availability.
- ⁴ EM battery not available. See page 3 for OPTIONS DETAILS.
- ⁵ See page 3 for MOUNTING DETAILS.
- ⁶ See page 3 for ADDITIONAL DRIVER OPTIONS.
- ⁷ Specify length 24", 48", or 96" available; not for use on sloped ceilings. Canopy and cord painted white unless specified otherwise. Must specify cord. See page 3 for OPTIONS DETAILS.
- ⁸ Specify length in 1" increments, minimum 6". Canopy and pendant match fixture housing color unless specified otherwise.
- ⁹ DRV and DIM only



HC7 LED

7.5" High Output Cylinder

FIXTURE PERFORMANCE DATA

	DISTRIBUTION	DELIVERED LUMENS	WATTAGE	EFFICACY (lm/W)
80 CRI				
L81	W	8145	141	58
	M	8011		57
	N	9123		65
L102	W	10180	177	58
	M	10011		57
	N	11379		65
90 CRI				
L65	W	6518	141	46
	M	6411		46
	N	7301		52
L81	W	8148	177	46
	M	8012		45
	N	9107		52

- Photometrics tested in accordance with IESNA LM-79. Results shown are based on 25°C ambient temperature.
- Wattage shown is average for 120V through 277V input.
- Results based on W distribution and CS reflector finish, 3500K/80CRI, actual lumens may vary +/-5%
- Use multiplier table to calculate additional options.

MULTIPLIER TABLES

COLOR TEMPERATURE		
CRI	CCT	CONVERSION FACTOR
80	3000K	0.96
	3500K	1.00
	4000K	1.05
90	2700K	0.80
	3000K	0.80

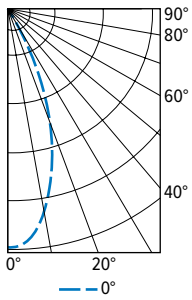
REFLECTOR FINISH		
CATALOG NUMBER	REFLECTOR FINISH	CONVERSION FACTOR
CS	Clear semi-specular	1.00
SPC	Clear specular	1.02
CG	Champagne Gold	0.96
GD	Gold	0.93
PW	Pewter	0.86
SG	Satin-glow	0.83
STR	Straw	0.97
WH	White, textured	0.90
WT	Wheat	0.88
MB	Micro-baffle	0.60

STEP DIMMING LEVELS

CRI	LUMEN PACKAGE	DIM LEVEL
80	L81	50%
	L102	40%
90	L65	50%
	L81	40%

PHOTOMETRY

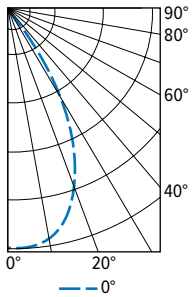
HC7-L102/835-WHT-CS/N-PM-DRV-UNV Report #: 19626.0; 12/20/16 | Total Luminaire Output: 11379 lumens; 177 Watts | Efficacy: 64.6 lm/W | 83.2 CRI; 3495K CCT



	VERTICAL ANGLE	HORIZONTAL ANGLE 0°	ZONAL LUMENS
CANDLEPOWER DISTRIBUTION	0	21604	
	5	21144	2018
	15	15386	4361
	25	7175	3321
	35	2205	1385
	45	303	234
	55	37	33
	65	19	19
	75	6	7
	85	0	0
	90	0	0

LUMEN SUMMARY	ZONE	LUMENS	% FIXTURE
LUMEN SUMMARY	0 - 30	9701	85
	0 - 40	11086	97
	0 - 60	11353	100
	0 - 90	11379	100
	0 - 180	11379	100

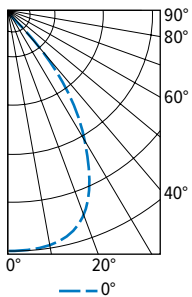
HC7-L102/835-WHT-CS/M-PM-DRV-UNV Report #: 19625.0; 12/20/16 | Total Luminaire Output: 10011 lumens; 176.4 Watts | Efficacy: 56.7 lm/W | 83.0 CRI; 3512K CCT



	VERTICAL ANGLE	HORIZONTAL ANGLE 0°	ZONAL LUMENS
CANDLEPOWER DISTRIBUTION	0	11635	
	5	11554	1103
	15	10702	3034
	25	7387	3419
	35	3157	1983
	45	497	385
	55	61	54
	65	24	24
	75	8	8
	85	0	0
	90	0	0

LUMEN SUMMARY	ZONE	LUMENS	% FIXTURE
LUMEN SUMMARY	0 - 30	7556	76
	0 - 40	9539	95
	0 - 60	9978	100
	0 - 90	10011	100
	0 - 180	10011	100

HC7-L102/835-WHT-CS/W-PM-DRV-UNV Report #: 19624.0; 12/20/16 | Total Luminaire Output: 10180 lumens; 176.4 Watts | Efficacy: 57.7 lm/W | 82.9 CRI; 3525K CCT



	VERTICAL ANGLE	HORIZONTAL ANGLE 0°	ZONAL LUMENS
CANDLEPOWER DISTRIBUTION	0	8779	
	5	8830	843
	15	8477	2403
	25	7040	3259
	35	4005	2516
	45	1197	927
	55	172	154
	65	56	55
	75	20	22
	85	2	2
	90	0	0

LUMEN SUMMARY	ZONE	LUMENS	% FIXTURE
LUMEN SUMMARY	0 - 30	6505	64
	0 - 40	9020	89
	0 - 60	10102	99
	0 - 90	10180	100
	0 - 180	10180	100



HC7 LED 7.5" High Output Cylinder

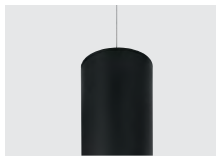
ADDITIONAL DRIVER OPTIONS

Note: Lumen restrictions apply, consult product builder at hew.com/product-builder.

CATALOG NUMBER	DESCRIPTION
DRV	Driver prewired for non-dimming applications
DIM	Dimming driver prewired for 0-10V low voltage applications
DIM1	1% dimming driver prewired for 0-10V low voltage applications
DIM LINE	Line voltage dimming driver (Must specify 120V or 277V only)
DMX	0.1% dimming driver for DMX controls
SD40	40% step-dimming driver
SD50	50% step-dimming driver
DALI	DALI dimming driver
LTE LINE	Lutron Hi-lume 1% 2-wire dimming driver forward phase line voltage controls (120V only)
LDE1	Lutron Hi-lume 1% EcoSystem dimming LED driver
LDE5	Lutron 5-Series 5% EcoSystem dimming LED driver
ELDO SOLOB	EldoLED Solodrive, 0.1% dimming driver for 0-10V controls
ELDO SOLOB DALI	EldoLED Solodrive, 0.1% dimming driver for DALI controls
ELDO ECO1	EldoLED Ecodrive, 1% dimming driver for 0-10V controls
ELDO ECO1 DALI	EldoLED Ecodrive, 1% dimming driver for DALI controls

MOUNTING DETAILS

CABLE MOUNT (CM_)



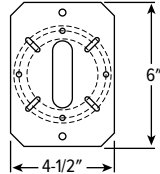
- Cable mount fixtures are provided with:
- Adjustable length aircraft cable, must specify length in inches.
 - White cord, No. 18 AWG.
 - One 5" canopy.
 - T-bar clip with 1/4-20 stud.
 - Hard ceiling anchor provided by others.
 - Not for use on sloped ceilings.
 - See [instruction sheet](#) for more information.

PENDANT MOUNT (PM_)



- Swivel pendant mount fixtures are provided with:
- 45° Swivel canopy
 - 3/8" IPS (5/8" O.D.) Threaded stem
 - Specify length of stem, 6" minimum, 24" default length.
 - See [instruction sheet](#) for more information.

WALL MOUNT (WM)



Mounts to 4" maximum J-box. Includes wall mounting plate and cast cover.

QUICK SURFACE MOUNT (QM)



Quick installation canopy surface mount. Increases fixture height by 1"

CORD OPTIONS

Must specify cord when cable mounting.

EXAMPLE: S2438/W				
CORD TYPE	LENGTH	# OF CONDUCTORS	WIRE SIZE	COLOR
S = Straight	24 24"	3 3	8 18-gauge	/B Black
	48 48"	4 4		/W White
	96 96"	5 5		

OPTIONS DETAILS

LAD



LADO

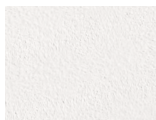


LAR

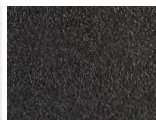


FINISH OPTIONS

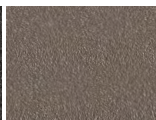
WHITE



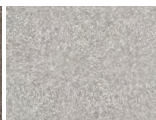
BLACK



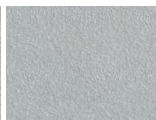
BRONZE



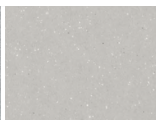
NICKEL



SILVER



ALUMINUM



For custom color, please specify RAL code or a manufacturer code with description. All custom colors other than RAL require two sample swatches, minimum 1" square.

