

CATALOG #: _____

TYPE: _____

PROJECT: _____



FEATURES

- Attractive and efficient architectural fixture delivers comfortable, uniform illumination
- Air return capability reduces number of unsightly ceiling vents for a cleaner appearance
- Seamlessly integrate LED to any existing HET project
- Maximize energy savings with efficacies as high as 135 lm/W
- Fully room-side accessible without the use of tools
- Frosted acrylic diffusers combined with highly reflective matte white paint provide high optical efficiencies and visual comfort
- One-piece diffusers eliminate the need for separate overlays
- Companion HES products preserve continuity, see hew.com
- Wireless in-fixture control solutions available
- Made Right Here® in the USA

SPECIFICATIONS

- HOUSING** – 22-gauge die-formed C.R.S.
- SHIELDING** – Frosted, ribbed acrylic.
- FINISH** – Highly reflective non-glare matte white polyester powder coat bonded to phosphate-free, multi-stage pretreated metal. All parts painted after fabrication to facilitate installation, increase efficiency, and inhibit corrosion.
- ELECTRICAL** – High-quality mid-power LED boards. Rated for 50,000 hours at 70% lumen maintenance (L70).
- MOUNTING** – NEMA Type “G” 15/16” or 1” grid standard. For NEMA Type “NFG” and “SG” 9/16” grid installations, specify EQCLIPS option.
- LISTINGS** –
 - cCSAus certified as luminaire suitable for dry or damp locations.
 - Complies with the Buy American Act and other federal regulations. Request certification at hew.com/baa.
- WARRANTY** – 5-year limited warranty, see hew.com/warranty.

ORDERING EXAMPLE: HETG - AR24 - L76/835 - A - OPTIONS - CONTROL/DIM - UNV

ORDERING INFO

| SERIES | CEILING TYPE | FIXTURE STYLE | WIDTH | LENGTH | LUMENS ^[1] | CRI | CCT | | |
|--------|---------------------|-----------------------------------|---------------------|--------|-----------------------|----------------------------|----------------------|--|-----------------|
| HET | G 15/16” or 1” grid | AR Air return only ^[2] | 1 1' ^[3] | 2 2' | 1x4 | 8 80 | 30 3000K | | |
| | | | | 4 4' | L38 3,800lm | 9 90 ^[4] | 35 3500K | | |
| | | | | | | | L69 6,900lm | | 40 4000K |
| | | | | | | | 2x2 | | 50 5000K |
| | | | | | | | L38 3,800lm | | |
| | | | | | | | L69 6,900lm | | |
| | | | | | | | 2x4 | | |
| | | | | | | | L50 5,000lm | | |
| | | | | | | | L76 7,600lm | | |
| | | | | | | | L130 13,000lm | | |

| SHIELDING | OPTIONS ^[5] | CONTROL |
|--|--|---|
| A Frosted, ribbed acrylic diffusers | EM/10W 10-watt emergency battery EQCLIPS Earthquake clips ^[6] (L_) Additional lower lumen packages available. Example: 6,500 nominal lumens = HETG-AR24-L76/840-A-(L65). ^[7] | – None AVI-LVFA Avi-on wireless fixture control ^[8] AWNRR Lutron Athena wireless node integral fixture control, RF only ^[9] |

| DRIVER | VOLTAGE |
|--|------------------------------------|
| See page 4 for ADDITIONAL CONTROL/DRIVER OPTIONS . | 120 120V 277 277V |
| DIM Driver with external dimming wires | UNV 120-277V |
| DRV Driver without external dimming wires | 347 347V ^[12] |
| DA Driver with 12V auxiliary power, without external dimming wires ^[10] | |
| DSR Sensor-ready driver without external dimming wires (D4i DALI-2) ^[11] | |

NOTES

- Lumen output based on 80 CRI/3500K CCT. Actual performance may vary +/-5%, see page 2 for **FIXTURE PERFORMANCE DATA**. Additional lumen packages available, see options.
- Air return through side slots.
- Available in 4' length only.
- Extended lead times may apply. Consult factory for availability.
- See Technical Info for **Power Entry** details.
- 4 per fixture. Optional for 1” grid installations. Required for 9/16” grid mounting.
- Specify in increments of 100 nominal lumens. Option must be specified with next higher lumen package.
- DA Driver only. See page 3 for **AVI-ON BLUETOOTH WIRELESS CONTROL DETAILS**.
- DA and DSR Drivers only.
- Avi-on and Lutron Athena Controls only.
- Lutron Athena Controls only.
- Not available with EM batteries, DA, or DSR drivers.



FIXTURE PERFORMANCE DATA

| | LED PACKAGE | DELIVERED LUMENS | WATTAGE | EFFICACY (lm/W) |
|-----|-------------|------------------|---------|-----------------|
| 1x4 | L38 | 3868 | 30.7 | 126 |
| | L69 | 6984 | 54.4 | 128 |
| 2x2 | L38 | 3825 | 30.7 | 125 |
| | L69 | 6905 | 54.4 | 127 |
| 2x4 | L50 | 5114 | 37.7 | 136 |
| | L76 | 7696 | 59.8 | 129 |
| | L130 | 13128 | 98.7 | 133 |

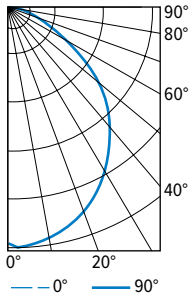
MULTIPLIER TABLE

| | COLOR TEMPERATURE | |
|--------|-------------------|-------------------|
| | CCT | CONVERSION FACTOR |
| 80 CRI | 3000K | 0.99 |
| | 3500K | 1.00 |
| | 4000K | 1.03 |
| | 5000K | 1.06 |
| 90 CRI | 3000K | 0.82 |
| | 3500K | 0.83 |
| | 4000K | 0.86 |
| | 5000K | 0.89 |

- Photometrics tested in accordance with IESNA LM-79. Results based on 80 CRI/3500K CCT, average wattage for 120V through 277V input, and 25°C ambient temperature. Actual performance may vary +/-5%.
- To calculate lumen output in emergency mode, multiply the battery wattage by the efficacy.
- Use multiplier table to calculate additional options.

PHOTOMETRY

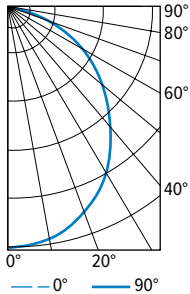
HETG-AR14-L69/835 Total Luminaire Output: 6905 lumens; 54.4 Watts | Efficacy: 126.9 lm/W | 80 CRI; 3500K CCT



| CANDLEPOWER DISTRIBUTION | VERTICAL ANGLE | HORIZONTAL ANGLE | | | ZONAL LUMENS |
|--------------------------|----------------|------------------|------|------|--------------|
| | | 0° | 45° | 90° | |
| | 0 | 2602 | 2602 | 2602 | |
| | 5 | 2589 | 2588 | 2589 | 246 |
| | 15 | 2476 | 2483 | 2502 | 701 |
| | 25 | 2250 | 2275 | 2302 | 1048 |
| | 35 | 1932 | 1982 | 2032 | 1239 |
| | 45 | 1561 | 1637 | 1698 | 1260 |
| | 55 | 1165 | 1261 | 1291 | 1111 |
| | 65 | 769 | 842 | 797 | 804 |
| | 75 | 386 | 410 | 348 | 417 |
| | 85 | 79 | 51 | 29 | 79 |
| | 90 | 5 | 4 | 4 | |

| LUMEN SUMMARY | ZONE | LUMENS | % FIXTURE |
|---------------|---------|--------|-----------|
| | 0 - 30 | 1994 | 29 |
| | 0 - 40 | 3233 | 47 |
| | 0 - 60 | 5605 | 81 |
| | 0 - 90 | 6905 | 100 |
| | 0 - 180 | 6905 | 100 |

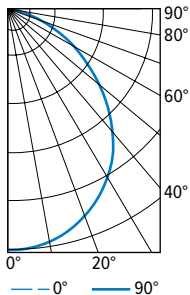
HETG-AR22-L69/835 Total Luminaire Output: 6984 lumens; 54.4 Watts | Efficacy: 128.4 lm/W | 80 CRI; 3500K CCT



| CANDLEPOWER DISTRIBUTION | VERTICAL ANGLE | HORIZONTAL ANGLE | | | ZONAL LUMENS |
|--------------------------|----------------|------------------|------|------|--------------|
| | | 0° | 45° | 90° | |
| | 0 | 2827 | 2827 | 2827 | |
| | 5 | 2816 | 2819 | 2813 | 267 |
| | 15 | 2693 | 2706 | 2722 | 764 |
| | 25 | 2424 | 2494 | 2521 | 1144 |
| | 35 | 2049 | 2164 | 2237 | 1344 |
| | 45 | 1580 | 1743 | 1843 | 1325 |
| | 55 | 1065 | 1244 | 1368 | 1094 |
| | 65 | 617 | 753 | 714 | 700 |
| | 75 | 274 | 300 | 191 | 296 |
| | 85 | 45 | 27 | 11 | 50 |
| | 90 | 0 | 0 | 0 | |

| LUMEN SUMMARY | ZONE | LUMENS | % FIXTURE |
|---------------|---------|--------|-----------|
| | 0 - 30 | 2175 | 31 |
| | 0 - 40 | 3519 | 50 |
| | 0 - 60 | 5937 | 85 |
| | 0 - 90 | 6984 | 100 |
| | 0 - 180 | 6984 | 100 |

HETG-AR24-L130/835 Total Luminaire Output: 13128 lumens; 98.7 Watts | Efficacy: 133.0 lm/W | 80 CRI; 3500K CCT



| CANDLEPOWER DISTRIBUTION | VERTICAL ANGLE | HORIZONTAL ANGLE | | | ZONAL LUMENS |
|--------------------------|----------------|------------------|------|------|--------------|
| | | 0° | 45° | 90° | |
| | 0 | 5229 | 5229 | 5229 | |
| | 5 | 5201 | 5179 | 5180 | 493 |
| | 15 | 4985 | 5002 | 4995 | 1408 |
| | 25 | 4546 | 4623 | 4638 | 2118 |
| | 35 | 3920 | 4000 | 4094 | 2508 |
| | 45 | 3021 | 3233 | 3364 | 2474 |
| | 55 | 2058 | 2389 | 2505 | 2081 |
| | 65 | 1180 | 1505 | 1278 | 1369 |
| | 75 | 514 | 599 | 385 | 579 |
| | 85 | 86 | 53 | 39 | 97 |
| | 90 | 0 | 0 | 0 | |

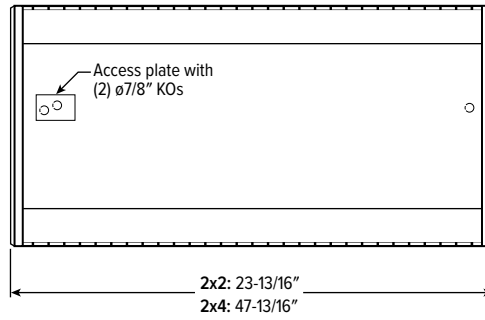
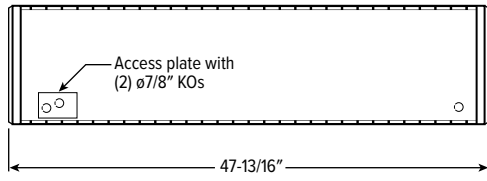
| LUMEN SUMMARY | ZONE | LUMENS | % FIXTURE |
|---------------|---------|--------|-----------|
| | 0 - 30 | 4019 | 31 |
| | 0 - 40 | 6527 | 50 |
| | 0 - 60 | 11082 | 84 |
| | 0 - 90 | 13128 | 100 |
| | 0 - 180 | 13128 | 100 |



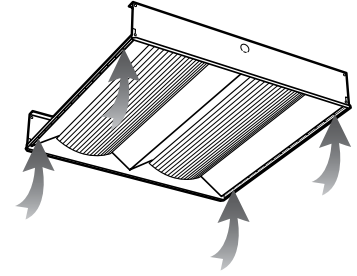
HET LED High Efficiency Troffer – Air Return

FIXTURE DETAILS

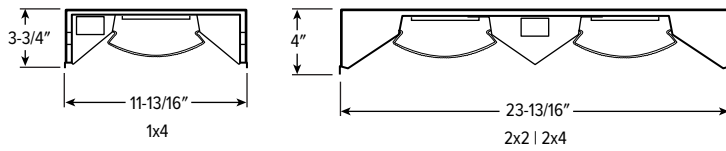
BACK VIEWS



AIR RETURN



CROSS SECTIONS



SEE NEXT PAGE FOR CONTROL DETAILS.

HET LED High Efficiency Troffer – Air Return

AVI-ON BLUETOOTH WIRELESS CONTROL DETAILS

FEATURES

Simple

- Gateway-free distributed control
- Factory pre-commissioning
- Contractor friendly installation
- Occupancy/vacancy/daylight sensing

Scalable

- Virtually unlimited network size
- Spans small offices to large warehouses
- Flexible control strategies

Secure

- Optional cloud connectivity
- UL IoT platinum security rating
- DLC 5.0 compliant

COMMISSIONING & INSTALLATION TOOLS

Avi-on mobile apps provide intuitive, quick installation and commissioning. Pro tools are available to qualified installers. Live commissioning training and on-site or remote support by Avi-on must be ordered separately through Avi-on.



Commissioning Mobile App

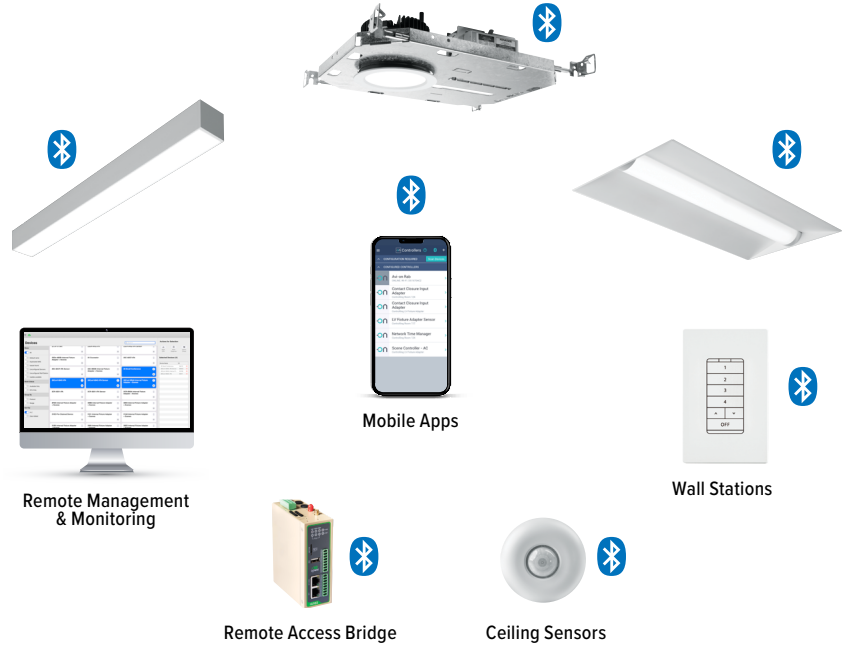


Zone Scanner Web App



Commissioning Pro App

SYSTEM COMPONENTS



The Bluetooth® word mark and logos are registered trademarks owned by Bluetooth SIG, Inc. and any use of such marks by Avi-on is under license. Other trademarks and trade names are those of their respective owners.

ACCESSORIES

| WALL STATIONS | |
|---------------|--|
| AVI-2401AC | Scene controller - numbered 1-4, 120-277VAC |
| AVI-2402BAT | Scene controller - numbered 1-4, battery powered |
| AVI-2401AC-2 | Dimmer with presets - percentages, 120-277VAC |
| AVI-2402BAT-2 | Dimmer with presets - percentages, battery powered |
| AVI-2401AC-3 | On/off/dimming, 120-277VAC |
| AVI-2402BAT-3 | On/off/dimming, battery powered |

| NETWORK | |
|-----------------------|--|
| AVI-RAB-LTE | Remote access bridge |
| AVI-KIT-NTM | Network time manager with battery backup |
| CEILING MOUNT SENSORS | |
| AVI-KIT-SEN-DUCM | PIR motion and ultrasonic sensor kit |
| AVI-KIT-SEN-ICM | PIR motion and photocell sensor kit |

For load controllers and additional accessory info, see hew.com/avi-on

ADDITIONAL CONTROL/DRIVER OPTIONS

Note: Lumen restrictions apply, consult product builder at hew.com/product-builder.

| CATALOG NUMBER | DESCRIPTION |
|----------------|--|
| AVI-LVFA/DA | Avi-on wireless fixture control for use with driver with 12V auxiliary power |
| AWN/DA | Lutron Athena wireless node integral fixture control, RF only, for use with driver with 12V auxiliary power |
| AWN/DSR | Lutron Athena wireless node integral fixture control, RF only, for use with sensor-ready driver (D4i DALI-2) |
| DRV | Driver prewired for non-dimming applications |
| DIM | Dimming driver prewired for 0-10V low voltage applications |
| DIM1 | 1% dimming driver prewired for 0-10V low voltage applications |
| DIM LINE | Line voltage dimming driver (TRIAC and ELV compatible, 120V only) |
| DIM TRC | Line voltage dimming driver (TRIAC compatible, 120V only) |
| SD40 | 40% step-dimming driver |
| SD50 | 50% step-dimming driver |
| DALI | DALI dimming driver |
| LDE1 | Lutron Hi-Lume 1% EcoSystem dimming LED driver |

