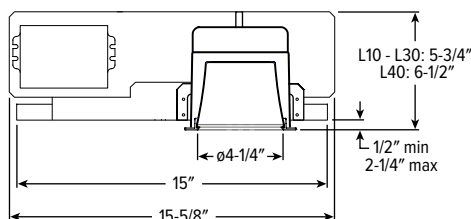
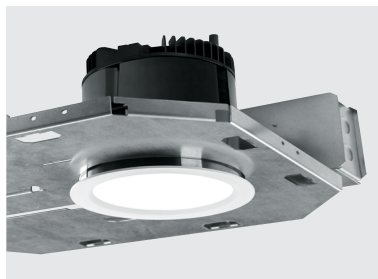


HS4DR^{LED} 4.5" MIL-Spec Surgical Downlight – Round



CATALOG #: _____

TYPE: _____

PROJECT: _____



FEATURES

TrimLock[®]

- Innovative TrimLock reflector retention system ensures trim remains flush with ceiling plane
- Complies with surgical suite specification MIL-STD-461G conducted emission regulations
- Designed to meet the demanding requirements of controlled environments
- Smooth surface trim and lens materials simplify cleaning and maintenance
- NSF-approved gasketing meets all required testing criteria for ISO 5, Class 100 certification
- Anti-microbial white finish is standard

SPECIFICATIONS

- HOUSING** – Die-cast aluminum trim housing with forged aluminum heat sink. Galvanized steel splice compartment with driver mounting plate/enclosure. Swing-out mounting arms field adjust for ceiling thickness from 1/2" – 2-1/4".
- TRIM** – Die-cast aluminum frame with micro-prismatic, acrylic lens.
- DIE-CAST FINISH** – Textured anti-microbial matte white or black polyester TGIC powder coat bonded to phosphate-free, multi-stage pretreated metal.
- ELECTRICAL** – High-performance Class 2 C.O.B. LED array. Modular quick-connect plug for easy field-connection of LED light assembly to driver. Reported L70>55,000 hours. Reported L90>55,000 hours. Estimated L70 = 200,000 hours. Power factor may be lower than typical due to MIL-SPEC requirements, see fixture performance data.
- MOUNTING** – Recessed. 20 ga. galvanized steel mounting pan. Minimum 24" O.C. marked spacing required for L30 and L40 lumen packages. 14" minimum plenum height required for room-side access of driver/junction box.
- LISTINGS** –
 - cCSAus conforms to UL STD 1598; Certified to CAN/CSA STD C22.2 No. 250.0 for wet locations under covered ceiling. LED light assembly conforms to UL 2108 for remote installation.
 - IP65 rated
 - ISO 5, Class 100 rated
 - NSF/ANSI 2
 - Complies with MIL-STD-461G. Consult factory for remote driver installation.
 - Complies with ASTM-E283 when specified with ATH option.
 - RoHS compliant.
 - Complies with the Buy American Act and other federal regulations. Request certification at hew.com/baa.
- WARRANTY** – 5-year limited warranty, see hew.com/warranty.

ORDERING EXAMPLE: **HS4DR - TL - L20/835 - OPTIONS - DIM - UNV - LW - OF - WH - TRIM OPTIONS - N - F1**

HOUSING TRIM MOUNT

HOUSING

SERIES	LUMENS ^[1]	CRI	CCT	OPTIONS	CONTROL	VOLTAGE
HS4DR - TL	L10 1,000lm	8 80	27 2700K	ATH Airtight construction	DIM Dimming driver, 0-10V	UNV 120-277V
TrimLock	L15 1,500lm	9 90	30 3000K	F Fuse	DIM1 1% Dimming driver, 0-10V	
	L20 2,000lm		35 3500K	EM/7W 7-watt emergency battery ^[2]		
	L30 3,000lm		40 4000K	EM/10W 10-watt emergency battery ^[3]		
	L40 4,000lm		50 5000K			

TRIM

TRIM TYPE	DISTRIBUTION ^[4]	FLANGE TYPE	REFLECTOR FINISH	TRIM OPTIONS
L Flush lens	W Wide	OF 1/2" standard flange	WH White texture powder coat	AD Diffuse acrylic lens ^[8]
R Regressed lens	50° Flush		BL Black texture powder coat	PD Diffuse 1/8" polycarbonate lens ^[9]
	50° Regressed		MB Black texture splay with white flange ^[7]	
	M Medium ^[5]			
	35° Flush			
	30° Regressed			
	N Narrow ^[6]			
	25° Flush			
	25° Regressed			

MOUNTING

MOUNTING TYPE^[10]

N Open pan for new construction

MOUNTING HARDWARE^[11]

F1 Integral 2-position fixed pan bracket, universal bar hanger included
BA1 Adjustable butterfly pan bracket, bar hanger not included
CA1 Adjustable caterpillar pan bracket, universal bar hanger included

NOTES

- Lumen output based on L Trim Type, W Distribution and WH Reflector Finish, 80 CRI/3500K CCT. Actual performance may vary +/-5%, see page 2 for FIXTURE PERFORMANCE DATA.
- Not IP65 rated. Specify CEC in the option code when California Energy Commission regulations are required.
- Not IP65 rated. Specify CEC in the option code when California Energy Commission regulations are required.
- Beam angle based on WH Reflector Finish.
- L30 lumen package max when specified with Medium or Narrow Distribution.
- L30 lumen package max when specified with Medium or Narrow Distribution.
- R Trim Type only.
- W Distribution only. Includes smooth clear polycarbonate underlay.
- W Distribution only. Includes smooth clear polycarbonate underlay.
- Mounting hardware required, ordered separately, see MOUNTING HARDWARE ordering info. See page 3 for MOUNTING TYPE DETAILS.
- Additional Mounting Hardware options available. See page 3 for MOUNTING HARDWARE DETAILS.



HS4DR^{LED} 4.5" MIL-Spec Surgical Downlight – Round

FIXTURE PERFORMANCE DATA

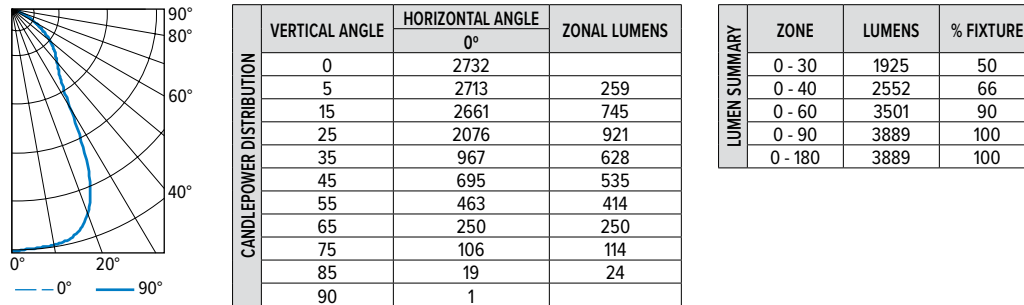
			FLUSH LENS TRIM TYPE		REGRESSED LENS TRIM TYPE		TOTAL AMP DRAW ⁽¹⁾	
	DISTRIBUTION	WATTAGE	DELIVERED LUMENS	EFFICACY (lm/W)	DELIVERED LUMENS	EFFICACY (lm/W)	120V	277V
L10	W	14.5	992	68	972	67	Consult Factory	
	M	14.5	1317	91	1319	91		
	N	14.5	1345	93	1299	90		
L15	W	22.1	1472	67	1441	65		
	M	22.1	1953	88	1955	86		
	N	22.1	1995	90	1927	87		
L20	W	26.9	1967	73	1927	72		
	M	26.9	2610	97	2614	97		
	N	26.9	2667	99	2576	96		
L30	W	41.4	2813	68	2755	67		
	M	41.4	3732	90	3738	90		
	N	41.4	3813	92	3683	89		
L40	W	55.4	3889	70	3810	69		
	M	—	—	—	—	—		
	N	—	—	—	—	—		

¹ Power factor may be lower than typical due to MIL-SPEC requirements. Consult factory for actual fixture current.

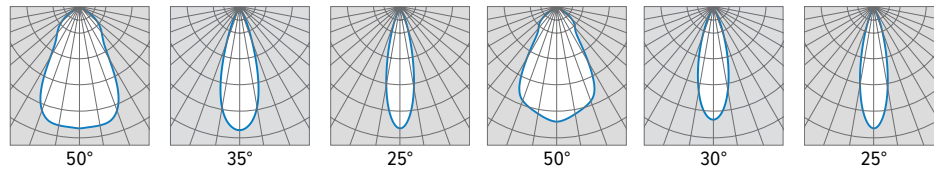
- Photometrics tested in accordance with IESNA LM-79. Results based on 80 CRI/3500K CCT, average wattage for 120V input, and 25°C ambient temperature. Actual performance may vary +/-5%.
- To calculate lumen output in emergency mode, multiply the battery wattage by the efficacy.
- Use multiplier tables to calculate additional options.

PHOTOMETRY

HS4DR-TL-L40/835-DIM-UNV-LW-OF-WH Total Luminaire Output: 3889 lumens; 55.4 Watts | Efficacy: 70 lm/W | 80 CRI; 3500K CCT

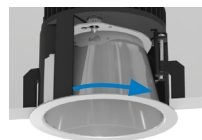


FLUSH



TRIMLOCK DETAILS

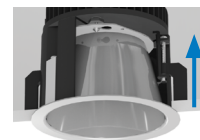
TWIST



PULL

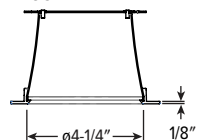


RELEASE

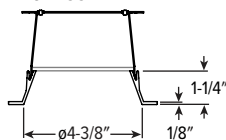


TRIM TYPE DETAILS

FLUSH

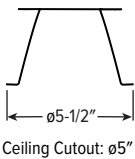


REGRESSED

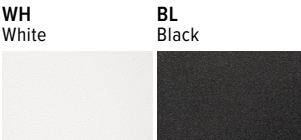


HS4DR^{LED} 4.5" MIL-Spec Surgical Downlight – Round

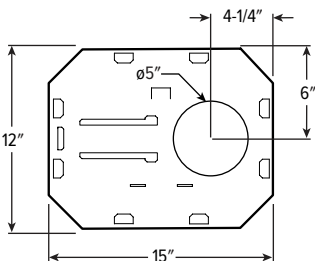
FLANGE TYPE DETAILS



REFLECTOR FINISH DETAILS

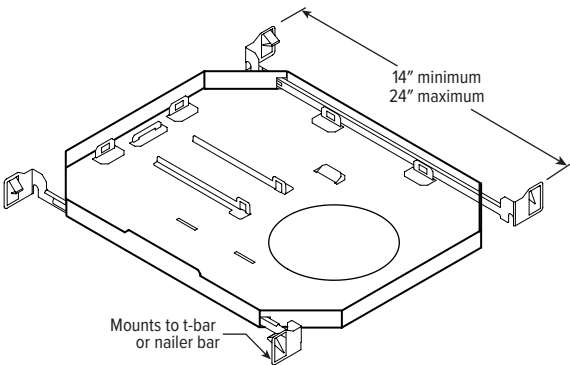


MOUNTING TYPE DETAILS

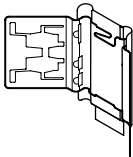


MOUNTING HARDWARE DETAILS

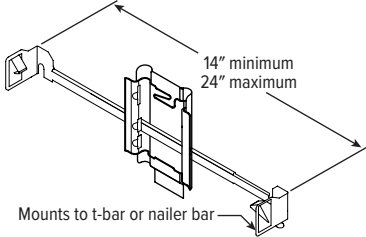
F1 Integral 2-position fixed pan bracket, universal bar hanger included



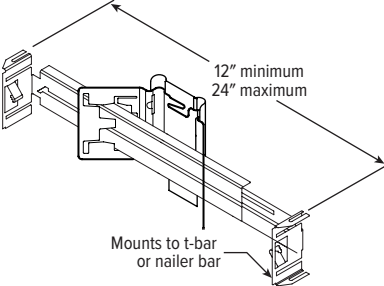
BA1 Adjustable butterfly pan bracket, bar hanger not included



CA1 Adjustable caterpillar pan bracket, universal bar hanger included



BA2 Adjustable butterfly pan bracket, heavy-duty universal bar hanger included



CA2 Adjustable caterpillar pan bracket, t-bar hanger included

