

CATALOG #: \_\_\_\_\_

TYPE: \_\_\_\_\_

PROJECT: \_\_\_\_\_

## FEATURES

- Create scalable, highly functioning smart buildings with Platformatics Power over Ethernet controls
- Available in six standard finishes for high-end design
- Unique mounting options – cable, wall, ceiling
- Fixture internals remove as one unit for easy installation and maintenance
- All-aluminum cylinder components dissipate heat for cooler operation
- Made Right Here® in the USA

## SPECIFICATIONS

- HOUSING – Extruded aluminum.
- FINISH – Polyester powder coat bonded to phosphate-free, multi-stage pretreated metal. All parts painted after fabrication to facilitate installation, increase efficiency, and inhibit corrosion.
- ELECTRICAL – High quality mid-power LED C.O.B. L70 >50,000 hours.
- MOUNTING – Surface, cable, pendant, or wall. Indoor applications only. Max weight 8 lbs.
- LISTINGS –
  - cETLus conforms to UL STD 1598 and UL STD 8750. Certified to CAN/CSA STD C22.2 No. 250.0. Suitable for damp locations.
- WARRANTY – 5-year limited warranty, see [hew.com/warranty](http://hew.com/warranty).

## SYSTEM REQUIREMENTS

- PoE-ready luminaires are connected to building power systems through network integration and require other components for complete PoE lighting system
- For additional PoE info, see [hew.com/poe](http://hew.com/poe)
- Consult factory for design support



## ORDERING EXAMPLE: LC6 - P28C/835 - WHT - CS/M - OPTIONS - QM - POE PR

### ORDERING INFO

SERIES	LUMENS <sup>[1]</sup>	CRI	CCT	HOUSING FINISH <sup>[2]</sup>	REFLECTOR FINISH	DISTRIBUTION <sup>[3]</sup>
LC6	P12C 1,200lm	8 80	27 2700K	ALUM Satin silver aluminum	CS Clear semi-specular (standard)	W 60° Wide
	P18C 1,800lm	9 90 <sup>[4]</sup>	30 3000K	BLK Textured black	CG Champagne gold	M 40° Medium
	P28C 2,800lm		35 3500K 40 4000K	BRZ Textured bronze NKL Textured nickel SLV Textured silver WHT Textured white	GD Gold PW Pewter SG Satin-glow SPC Clear specular	N 30° Narrow
					STR Straw WT Wheat WH Painted white reflector, textured	

### OPTIONS<sup>[5]</sup>

- LAD Acrylic luminous disk
- LADO Acrylic luminous disk open
- LAR Acrylic luminous ring

### MOUNTING<sup>[6]</sup>

- QM Quick installation canopy surface mount
- PM\_\_ Pendant mount<sup>[8]</sup>  
Example: 24" pendant = PM24
- SM Surface mount to octagonal J-box
- WM Wall mount
- CM\_\_ Adjustable aircraft cable mount, 24" length standard<sup>[9]</sup>  
Example: 24" cable = CM24

### CONTROL<sup>[7]</sup>

- POE PR Power over Ethernet, Platformatics-ready

## NOTES

- <sup>1</sup> Lumen output based on W distribution and CS reflector finish, 3500K/80 CR. Actual lumens may vary +/-5%, see page 2 for FIXTURE PERFORMANCE DATA.
- <sup>2</sup> See page 3 for FINISH OPTIONS.
- <sup>3</sup> Beam angle/distribution does not account for options/accessories such as accent cone with lens, acrylic accent rings, or alternate reflector finishes. Actual beam angle/distribution may vary. Consult factory with complete model number for approximate values.
- <sup>4</sup> Extended lead times may apply. Consult factory for availability.
- <sup>5</sup> See page 3 for OPTIONS DETAILS.
- <sup>6</sup> See page 3 for MOUNTING DETAILS.
- <sup>7</sup> See page 3 for NODE CONNECTION DETAILS. For additional PoE info, see [hew.com/poe](http://hew.com/poe).
- <sup>8</sup> Specify length in 1" increments, minimum 6". Canopy and pendant match fixture housing color unless specified otherwise.
- <sup>9</sup> 48" and 96" lengths available. Canopy painted white unless specified otherwise. Must specify network cable. See page 3 for MOUNTING DETAILS.



## FIXTURE PERFORMANCE DATA

	DISTRIBUTION	DELIVERED LUMENS	WATTAGE	EFFICACY (lm/W)
P12C	W	1158	17	69
	M	868		52
	N	615		37
P18C	W	1782	25	71
	M	1337		53
	N	948		38
P28C	W	2785	36	77
	M	2090		58
	N	1481		41

## MULTIPLIER TABLES

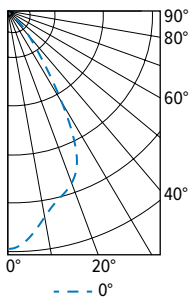
		COLOR TEMPERATURE	
		CCT	CONVERSION FACTOR
80 CRI	2700K		0.97
	3000K		0.99
	3500K		1.00
	4000K		1.03
90 CRI	2700K		0.80
	3000K		0.82
	3500K		0.83
	4000K		0.86

REFLECTOR FINISH		
CATALOG NUMBER	REFLECTOR FINISH	CONVERSION FACTOR
CS	Clear semi-specular	1.00
SPC	Clear specular	1.02
CG	Champagne Gold	0.96
GD	Gold	0.93
PW	Pewter	0.86
STR	Straw	0.97
WH	White, textured	0.90
WT	Wheat	0.88

- Photometrics tested in accordance with IESNA LM-79. Results shown are based on 25°C ambient temperature.
- Results scaled based on W distribution and CS reflector finish, 3500K/80 CRI. Actual lumens may vary +/-5%.
- Use multiplier tables to calculate additional options.

## PHOTOMETRY

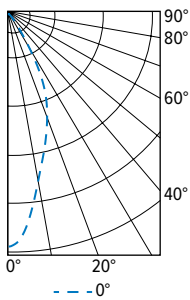
LC6-P28C/835-CS/W Total Luminaire Output: 2785 lumens; 36 Watts | Efficacy: 77 lm/W | 80 CRI; 3500K CCT



	VERTICAL ANGLE	HORIZONTAL ANGLE 0°	ZONAL LUMENS
CANDLEPOWER DISTRIBUTION	0	2826	
	5	2763	259
	15	2525	712
	25	2111	939
	35	882	567
	45	272	217
	55	62	62
	65	17	18
	75	8	8
	85	3	3
	90	3	3

LUMEN SUMMARY	ZONE	LUMENS	% FIXTURE
	0 - 40	2476	89
	0 - 60	2756	99
	0 - 90	2785	100
	0 - 180	2785	100

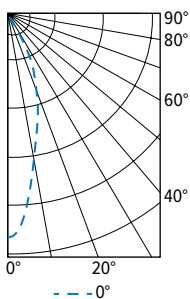
LC6-P28C/835-CS/M Total Luminaire Output: 2090 lumens; 36 Watts | Efficacy: 58 lm/W | 80 CRI; 3500K CCT



	VERTICAL ANGLE	HORIZONTAL ANGLE 0°	ZONAL LUMENS
CANDLEPOWER DISTRIBUTION	0	4552	
	5	4109	363
	15	2647	736
	25	1575	693
	35	321	228
	45	56	47
	55	12	11
	65	6	6
	75	3	3
	85	1	1
	90	1	1

LUMEN SUMMARY	ZONE	LUMENS	% FIXTURE
	0 - 40	2021	97
	0 - 60	2079	99
	0 - 90	2090	100
	0 - 180	2090	100

LC6-P28C/835-CS/N Total Luminaire Output: 1481 lumens; 36 Watts | Efficacy: 41 lm/W | 80 CRI; 3500K CCT



	VERTICAL ANGLE	HORIZONTAL ANGLE 0°	ZONAL LUMENS
CANDLEPOWER DISTRIBUTION	0	3954	
	5	3509	304
	15	1991	551
	25	1043	462
	35	171	131
	45	20	21
	55	5	4
	65	3	2
	75	2	2
	85	2	2
	90	3	3

LUMEN SUMMARY	ZONE	LUMENS	% FIXTURE
	0 - 40	1449	98
	0 - 60	1475	99
	0 - 90	1481	100
	0 - 180	1481	100



## MOUNTING DETAILS

### CABLE MOUNT (CM\_)



- CM\_** Cable mount fixtures are provided with:
- Adjustable length aircraft cable, must specify length in inches.
  - White network cable.
  - One 5" canopy.
  - T-bar clip with 1/4-20 stud.
  - Hard ceiling anchor provided by others.
  - See [instruction sheet](#) for more information.

### PENDANT MOUNT (PM\_)

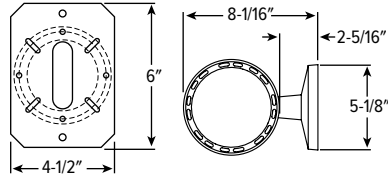


- PM\_** Swivel pendant mount fixtures are provided with:
- 45° Swivel canopy
  - 3/8" IPS Threaded stem
  - Specify length of stem, 6" minimum, 24" default length.
  - See [instruction sheet](#) for more information.

### WALL MOUNT (WM)



**WM** Includes wall mounting plate and cast cover.



### QUICK SURFACE MOUNT (QM)



**QM** Increases fixture height by 1".

### SURFACE MOUNT (SM)



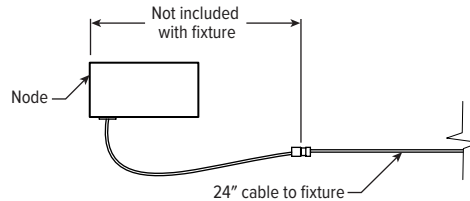
### NETWORK CABLE OPTIONS

Must specify network cable when cable mounting.

EXAMPLE: P24/W		
CORD TYPE	LENGTH	COLOR
P = PoE	24 24"	/B Black
	48 48"	/W White
	96 96"	

## NODE CONNECTION DETAILS

Includes 24" cable with 4-position mating connector for Platformatics POE-LN2 node. See node spec sheet for details: [platformatics.com/product/poe-ln2](http://platformatics.com/product/poe-ln2)



## OPTIONS DETAILS

### LAD



### LADO

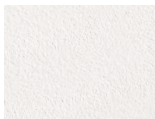


### LAR

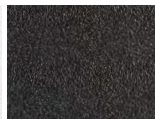


## FINISH OPTIONS

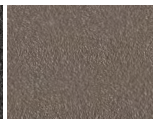
### WHITE



### BLACK



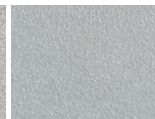
### BRONZE



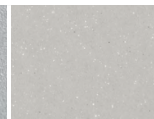
### NICKEL



### SILVER



### ALUMINUM



For custom color, please specify RAL code or a manufacturer code with description. All custom colors other than RAL require two sample swatches, minimum 1" square.

