

CATALOG #: _____

TYPE: _____

PROJECT: _____

FEATURES

- Create scalable, highly functioning smart buildings with Platformatics Power over Ethernet controls
- Available in six standard finishes for high-end design
- Unique mounting options – cable, wall, ceiling
- Fixture internals remove as one unit for easy installation and maintenance
- Self-flanged aluminum reflector prevents light leaks and is available in assorted colors
- All-aluminum cylinder components dissipate heat for cooler operation
- Made Right Here® in the USA

SPECIFICATIONS

- HOUSING – Extruded aluminum.
- FINISH – Polyester powder coat bonded to phosphate-free, multi-stage pretreated metal. All parts painted after fabrication to facilitate installation, increase efficiency, and inhibit corrosion.
- ELECTRICAL – High quality mid-power LED C.O.B. L70 >50,000 hours.
- MOUNTING – Surface, cable, pendant, or wall. Indoor applications only. Max weight 12 lbs.
- LISTINGS –
 - cETLus conforms to UL STD 1598 and UL STD 8750. Certified to CAN/CSA STD C22.2 No. 250.0. Suitable for damp locations.
- WARRANTY – 5-year limited warranty, see hew.com/warranty.

SYSTEM REQUIREMENTS

- PoE-ready luminaires are connected to building power systems through network integration and require other components for complete PoE lighting system
- For additional PoE info, see hew.com/poe
- Consult factory for design support



ORDERING EXAMPLE: LC7 - P45C/835 - WHT - CS/M - OPTIONS - QM - POE PR

ORDERING INFO

SERIES	LUMENS ^[1]	CRI	CCT	HOUSING FINISH ^[2]	REFLECTOR FINISH	DISTRIBUTION ^[3]
LC7	P14C 1,400lm	8 80	27 2700K	ALUM Satin silver aluminum	CS Clear semi-specular (standard)	W 75° Wide
	P20C 2,000lm	9 90 ^[4]	30 3000K	BLK Textured black	CG Champagne gold	M 50° Medium
	P45C 4,500lm		35 3500K 40 4000K	BRZ Textured bronze NKL Textured nickel SLV Textured silver WHT Textured white	GD Gold PW Pewter SG Satin-glow SPC Clear specular STR Straw WT Wheat WH Painted white reflector, textured	

OPTIONS ^[5]

- LAD Acrylic luminous disk
- LADO Acrylic luminous disk open
- LAR Acrylic luminous ring

MOUNTING ^[6]

- QM Quick installation canopy surface mount
- PM__ Pendant mount ^[8]
Example: 24" pendant = **PM24**
- SM Surface mount to octagonal J-box
- WM Wall mount
- CM__ Adjustable aircraft cable mount, 24" length standard ^[9]
Example: 24" cable = **CM24**

CONTROL ^[7]

- POE PR Power over Ethernet, Platformatics-ready

NOTES

- ¹ Lumen output based on W distribution and CS reflector finish, 3500K/80 CRI. Actual lumens may vary +/-5%, see page 2 for FIXTURE PERFORMANCE DATA.
- ² See page 3 for FINISH OPTIONS.
- ³ Beam angle/distribution does not account for options/accessories such as accent cone with lens, acrylic accent rings, or alternate reflector finishes. Actual beam angle/distribution may vary. Consult factory with complete model number for approximate values.
- ⁴ Extended lead times may apply. Consult factory for availability.
- ⁵ See page 3 for OPTIONS DETAILS.
- ⁶ See page 3 for MOUNTING DETAILS.
- ⁷ See page 3 for NODE CONNECTION DETAILS. For additional PoE info, see hew.com/poe.
- ⁸ Specify length in 1" increments, minimum 6". Canopy and pendant match fixture housing color unless specified otherwise.
- ⁹ 48" and 96" lengths available. Canopy painted white unless specified otherwise. Must specify network cable. See page 3 for NODE CONNECTION DETAILS.



FIXTURE PERFORMANCE DATA

	DISTRIBUTION	DELIVERED LUMENS	WATTAGE	EFFICACY (lm/W)
P14C	W	1437	17	86
	M	1358		82
P20C	W	2019	25	81
	M	1909		76
P45C	W	4461	50	89
	M	4217		84

- Photometrics tested in accordance with IESNA LM-79. Results shown are based on 25°C ambient temperature.
- Results based on W distribution and CS reflector finish, 3500K/80CRI, actual lumens may vary +/-5%
- Use multiplier tables to calculate additional options.

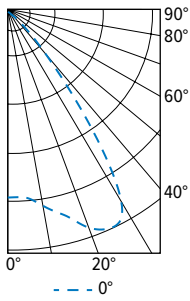
MULTIPLIER TABLES

		COLOR TEMPERATURE	
		CCT	CONVERSION FACTOR
80 CRI	2700K		0.97
	3000K		0.99
	3500K		1.00
	4000K		1.03
90 CRI	2700K		0.80
	3000K		0.82
	3500K		0.83
	4000K		0.86

REFLECTOR FINISH		
CATALOG NUMBER	REFLECTOR FINISH	CONVERSION FACTOR
CS	Clear semi-specular	1.00
SPC	Clear specular	1.02
CG	Champagne Gold	0.96
GD	Gold	0.93
PW	Pewter	0.86
STR	Straw	0.97
WH	White, textured	0.90
WT	Wheat	0.88

PHOTOMETRY

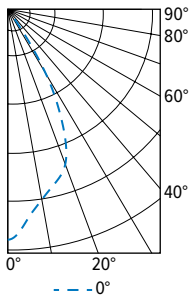
LC7-P45C/835-CS/W Total Luminaire Output: 4461 lumens; 50 Watts | Efficacy: 89 lm/W | 80 CRI; 3500K CCT



	VERTICAL ANGLE	HORIZONTAL ANGLE 45°	ZONAL LUMENS
CANDLEPOWER DISTRIBUTION	0		2879
	5		2906
	15		3215
	25		3603
	35		1903
	45		411
	55		54
	65		22
	75		9
	85		7
	90		10

	ZONE	LUMENS	% FIXTURE
LUMEN SUMMARY	0 - 40	4019	90
	0 - 60	4421	99
	0 - 90	4461	100
	0 - 180	4461	100

LC7-P45C/835-CS/M Total Luminaire Output: 4217 lumens; 50 Watts | Efficacy: 84 lm/W | 80 CRI; 3500K CCT



	VERTICAL ANGLE	HORIZONTAL ANGLE 45°	ZONAL LUMENS
CANDLEPOWER DISTRIBUTION	0		6352
	5		5846
	15		4949
	25		3549
	35		821
	45		103
	55		8
	65		4
	75		0
	85		2
	90		1

	ZONE	LUMENS	% FIXTURE
LUMEN SUMMARY	0 - 40	4114	98
	0 - 60	4211	99
	0 - 90	4217	100
	0 - 180	4217	100



MOUNTING DETAILS

CABLE MOUNT (CM_)



- CM_ Cable mount fixtures are provided with:**
- Adjustable length aircraft cable, must specify length in inches.
 - White network cable.
 - One 5" canopy.
 - T-bar clip with 1/4-20 stud.
 - Hard ceiling anchor provided by others.
 - See [instruction sheet](#) for more information.

PENDANT MOUNT (PM_)

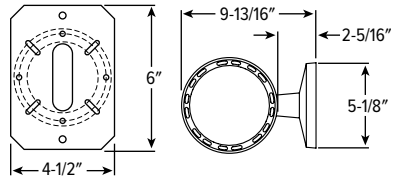


- PM_ Swivel pendant mount fixtures are provided with:**
- 45° Swivel canopy
 - 3/8" IPS Threaded stem
 - Specify length of stem, 6" minimum, 24" default length.
 - See [instruction sheet](#) for more information.

WALL MOUNT (WM)



WM Includes wall mounting plate and cast cover.



QUICK SURFACE MOUNT (QM)



QM Increases fixture height by 1".

SURFACE MOUNT (SM)



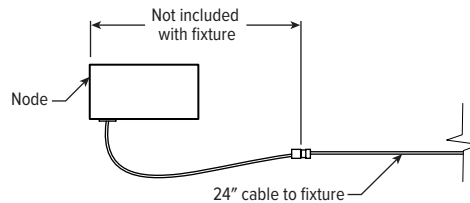
NETWORK CABLE OPTIONS

Must specify network cable when cable mounting.

EXAMPLE: P24/W		
CORD TYPE	LENGTH	COLOR
P = PoE	24 24"	/B Black
	48 48"	/W White
	96 96"	

NODE CONNECTION DETAILS

Includes 24" cable with 4-position mating connector for Platformatics POE-LN2 node. See node spec sheet for details: platformatics.com/product/poe-ln2



OPTIONS DETAILS

LAD



LADO

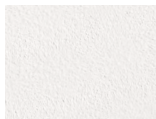


LAR

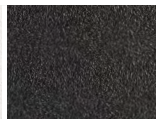


FINISH OPTIONS

WHITE



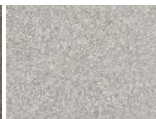
BLACK



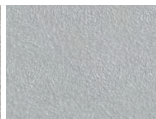
BRONZE



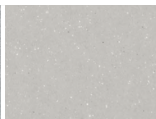
NICKEL



SILVER



ALUMINUM



For custom color, please specify RAL code or a manufacturer code with description. All custom colors other than RAL require two sample swatches, minimum 1" square.

