

CATALOG #: _____

Type: _____

PROJECT: _____

FEATURES

- Designed to deliver subtle area lighting with minimal glare for offices, classrooms, and general applications
- Flush (F) frame level option with frosted acrylic lens (AF125) creates the appearance of an unobtrusive and simple line of light – a perfect complement to unique design applications
- Fixture is Armstrong TechZone™ and USG Logix™ ceiling systems compatible
- Available with Avi-on wireless fixture controls
- Made Right Here® in the USA

SPECIFICATIONS

- HOUSING – 22-gauge die-formed C.R.S.
- SHIELDING – Steel door frame with integral torsion springs to secure the frame within the fixture, .125" thick frosted acrylic.
- FINISH – 92% minimum average reflective white powder polyester coat bonded to phosphate-free, multi-stage pretreated metal. All parts painted after fabrication to facilitate installation, increase efficiency, and inhibit corrosion.
- ELECTRICAL – High quality mid-power LED boards. Rated for 50,000 hours at 70% lumen maintenance (L70). L70 >50,000 hours.
- MOUNTING – Designed for NEMA Type "G" 1" grid ceiling standard. For NEMA Type "NFG" and "SG" 9/16" grid installations, specify EQCLIPS option. Drywall kit accessories available for flange applications, shipped separately, see options. Fixture must be installed prior to Drywall Kit.
- LISTINGS –
 - cCSAus certified as luminaire suitable for dry or damp locations.
- WARRANTY – 5-year limited warranty, see hew.com/warranty.

ORDERING EXAMPLE: LL6 G - 4 - L34/835 - SWF/AF125 - OPTIONS - CONTROL/DIM - UNV

ORDERING INFO

SERIES	CEILING TYPE ^[1]	LUMENS ^[2]	CRI	CCT	SHIELDING	
LL6	G NEMA Type "G", "SS", and "NFG" ^[3]	2'	8 80	27 2700K	SWF/AF125	
		L16 1,600lm	9 90 ^[4]	30 3000K	Steel, flush white frame with frosted acrylic, .125" thick	
		L38 3,800lm		35 3500K		
		3'		40 4000K	SWT/AF125	Steel, tegular white frame with frosted acrylic, .125" thick
		L26 2,600lm		50 5000K		
		L50 5,000lm				
		4'				
		L34 3,400lm				
		L76 7,600lm				
		5'				
		L42 4,200lm				
		L85 8,500lm				

OPTIONS

- EM/10W** 10-watt emergency driver^[6]
- EQCLIPS** Earthquake clips^[7]
- (L__)** Additional lower lumen packages available. Example: 4,000 nominal lumens = **LL6G-4-L34/850-(L40)**.^[8]
- DFK-0624W** Drywall kit, 6" x 24"^[9]
- DFK-0636W** Drywall kit, 6" x 36"^[10]
- DFK-0648W** Drywall kit, 6" x 48"^[11]
- DFK-0660W** Drywall kit, 6" x 60"^[12]

CONTROL^[5]

- None
- AVI-LVFA** Avi-on wireless fixture control^[13]
- AVI-LVFA-CS2-PIR** Avi-on wireless fixture control with PIR motion and daylight sensor^[14]

DRIVER^[15]

- DIM** Driver with external dimming wires **120** 120V
- DRV** Driver without external dimming wires **277** 277V
- DA** Driver with 12V auxiliary power, without external dimming wires^[16] **UNV** 120-277V
- 347** 347V^[17]

VOLTAGE



NOTES

- See page 3 for DRYWALL KIT (DFK) OPTIONS.
- Lumen output based on 3500 CCT. Actual lumens may vary +/-5%. See page 2 for FIXTURE PERFORMANCE DATA.
- When using in NEMA Type "SS" or "NFG" applications, must specify EQCLIPS option.
- Extended lead times may apply. Consult factory for availability.
- See page 4 for AVI-ON BLUETOOTH WIRELESS CONTROL DETAILS. See page 3 for SENSOR PLACEMENT DETAILS.
- Not available with L16, L38, or L50 lumen stops.
- 2 per fixture. Optional for 1" grid installations. Required for 9/16" grid mounting.
- Specify in increments of 100 nominal lumens. Option must be specified with next higher lumen package.
- See page 3 for DRYWALL KIT (DFK) OPTIONS. Fixture must be installed prior to Drywall Kit.
- See page 3 for DRYWALL KIT (DFK) OPTIONS. Fixture must be installed prior to Drywall Kit.
- See page 3 for DRYWALL KIT (DFK) OPTIONS. Fixture must be installed prior to Drywall Kit.
- See page 3 for DRYWALL KIT (DFK) OPTIONS. Fixture must be installed prior to Drywall Kit.
- DA Driver only.
- DA Driver only.
- See page 5 for ADDITIONAL DRIVER OPTIONS.
- Avi-on Controls only.
- DRV and DIM only. Not available with EM batteries or Avi-on Controls.



LL6 LED 6" Wide Linear Light

FIXTURE PERFORMANCE DATA

	LED PACKAGE	DELIVERED LUMENS	WATTAGE	EFFICACY (lm/W)
2'	L16	1,652	16.3	101.5
	L38	3,830	34.3	111.8
3'	L26	2,636	23.6	111.8
	L50	4,982	47.8	104.2
4'	L34	3,411	32.1	106.3
	L76	7,660	67.4	113.7
5'	L42	4,252	36.8	115.4
	L85	8,534	80.3	106.3

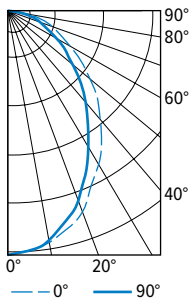
MULTIPLIER TABLE

COLOR TEMPERATURE		
	CCT	CONVERSION FACTOR
80 CRI	2700K	0.97
	3000K	0.99
	3500K	1.00
	4000K	1.03
90 CRI	5000K	1.06
	2700K	0.80
	3000K	0.82
	3500K	0.83
	4000K	0.86
	5000K	0.89

- Photometrics tested in accordance with IESNA LM-79. Results shown are based on 25°C ambient temperature.
- Wattage shown is average for 120V through 277V input.
- Results based on 3500K, 80 CRI, actual lumens may vary +/-5%
- Use multiplier table to calculate additional options.

PHOTOMETRY

LL6G-4-L34/835-SWF/AF125 Total Luminaire Output: 3411 lumens; 32.1 Watts | Efficacy: 106 lm/W | 80 CRI; 3500K CCT

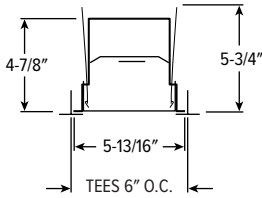


VERTICAL ANGLE	HORIZONTAL ANGLE			ZONAL LUMENS
	0°	45°	90°	
0	1662	1662	1662	
5	1652	1648	1646	156
15	1539	1516	1497	428
25	1334	1286	1235	594
35	1103	1026	954	641
45	850	765	694	589
55	580	513	460	464
65	361	318	285	318
75	179	156	141	171
85	50	44	41	50
90	0	0	0	

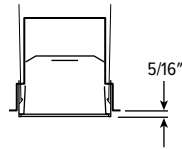
LUMEN SUMMARY	ZONE	LUMENS	% FIXTURE
	0 - 30	1177	35
	0 - 40	1818	53
	0 - 60	2872	84
	0 - 90	3411	100
	0 - 180	3411	100

CROSS SECTIONS

FLUSH LENS

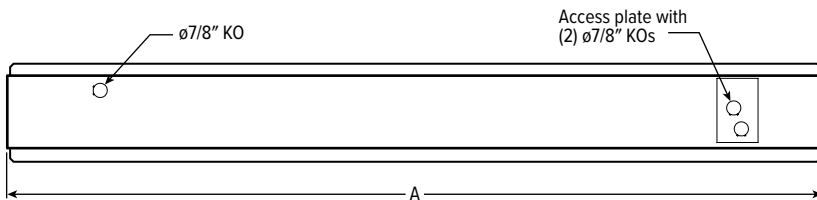


TEGULAR LENS



FIXTURE DETAILS

BACKVIEW



NOMINAL LENGTH	ACTUAL LENGTH (A)
2'	23-15/16"
3'	35-15/16"
4'	47-15/16"
5'	59-15/16"



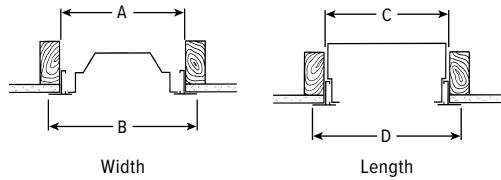
LL6 LED 6" Wide Linear Light

DRYWALL KIT (DFK) OPTIONS

ORDERING EXAMPLE: DFK - 06 24 W			
SERIES	WIDTH	LENGTH	FINISH
DFK Drywall Kit	See table below	See table below	W White AMW Anti-microbial white

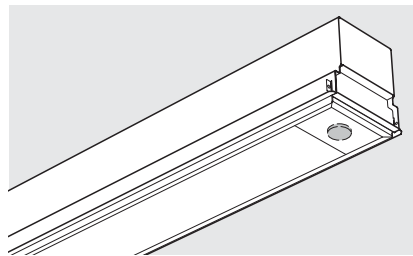
TYPICAL INSTALLATION

Refer to table for dimensions.



CATALOG NUMBER	NOMINAL SIZE	ROUGH-IN		FINISH TRIM SIZE	
		WIDTH (A)	LENGTH (C)	WIDTH (B)	LENGTH (D)
DFK-0624	6" x 2'	6-3/8"	24-3/8"	7-5/16"	25-5/16"
DFK-0636	6" x 3'	6-3/8"	36-3/8"	7-5/16"	37-5/16"
DFK-0648	6" x 4'	6-3/8"	48-3/8"	7-5/16"	49-5/16"
DFK-0660	6" x 5'	6-3/8"	60-3/8"	7-5/16"	61-5/16"

SENSOR PLACEMENT DETAILS



SEE NEXT PAGE FOR CONTROL DETAILS.



AVI-ON BLUETOOTH WIRELESS CONTROL DETAILS

AVI-ON NETWORK FEATURES

Simple

- Gateway-free distributed control
- Factory pre-commissioning
- Contractor friendly installation
- Occupancy/vacancy/daylight sensing

Scalable

- Virtually unlimited network size
- Spans small areas to large warehouses
- Flexible control strategies

Secure

- Optional cloud connectivity
- UL IoT platinum security rating
- DLC 5.0 compliant

DIGITAL INSTALLATION TOOLS

Avi-On mobile apps provide intuitive, quick installation and commissioning. Pro tools are available to qualified installers.



Commissioning Mobile App

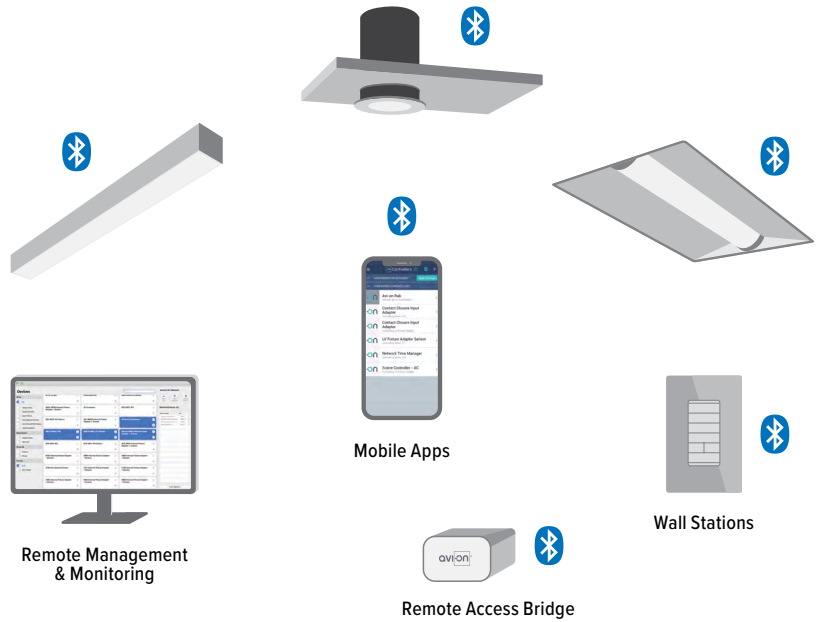


Zone Scanner Web App



Commissioning Pro App

SYSTEM COMPONENTS



The Bluetooth® word mark and logos are registered trademarks owned by Bluetooth SIG, Inc. and any use of such marks by Avi-On is under license. Other trademarks and trade names are those of their respective owners.

ACCESSORIES

WALL STATIONS	
AVI-2401AC	Scene controller - numbered 1-4, 120-277VAC
AVI-2402BAT	Scene controller - numbered 1-4, battery powered
AVI-2401AC-2	Dimmer with presets - percentages, 120-277VAC
AVI-2402BAT-2	Dimmer with presets - percentages, battery powered
AVI-2401AC-3	On/off/dimming, 120-277VAC
AVI-2402BAT-3	On/off/dimming, battery powered
CONNECTIVITY	
AVI-2001RAB-01-P	Remote access bridge for projects 100 or greater
AVI-2001RAB-01-C	Remote access bridge for projects less than 100
AVI-KIT-NTM	Network time manager with Battery Backup
CEILING MOUNT SENSORS	
AVI-KIT-SEN-DUCM	PIR motion and ultrasonic sensor kit
AVI-KIT-SEN-ICM	PIR motion and photocell sensor kit

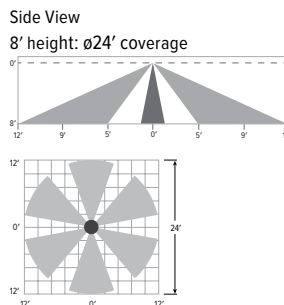
For load controllers and additional accessory info, see hew.com/avi-on

AVI-LVFA-CS2-PIR Avi-on wireless fixture control with PIR motion and daylight sensor. DA Driver only.

SPECIFICATIONS	
TYPE	PIR Motion + Daylight
MOUNTING HEIGHT	8' - 10'
DETECTION ANGLE	360°
TEMPERATURE RANGE	-30° to 50°C
RELATIVE HUMIDITY	10 to 80% non-condensing
IP RATING	IP20
MANUFACTURER	Avi-On

Bluetooth® Lighting Controls

SENSOR COVERAGE PATTERNS



SENSOR DETAIL



ADDITIONAL DRIVER OPTIONS

Note: Lumen restrictions apply, consult product builder at hew.com/product-builder.

CATALOG NUMBER	DESCRIPTION
DRV	Driver prewired for non-dimming applications
DIM	Dimming driver prewired for 0-10V low voltage applications
DIM1	1% dimming driver prewired for 0-10V low voltage applications
DIM LINE	Line voltage dimming driver (TRIAC and ELV compatible, 120V only)
DIM TRC	Line voltage dimming driver (TRIAC compatible, 120V only)
DA	Dimming driver with 12V auxiliary
SD40	40% step-dimming driver
SD50	50% step-dimming driver
DALI	DALI dimming driver
LDE1	Lutron Hi-lume 1% EcoSystem dimming LED driver

