

CATALOG #: _____

Type: _____

PROJECT: _____



FEATURES

- Designed for use in pairs to asymmetrically illuminate patient beds
- Fixtures can be installed to allow maintenance access without working directly over patient beds
- Optional low-voltage controller allows for bedside lighting control
- Multiple dimming protocols available
- Provides varying levels of illumination through dimming driver
- Anti-microbial finish suppresses the spread of dangerous micro-organisms, mold, and bacterial growth
- Quick-wire access plate in back of fixture housing for easy attachment of incoming power supply
- Maximize energy savings with efficacies as high as 106 lm/W
- Made Right Here® in the USA

SPECIFICATIONS

- HOUSING** – 22-gauge die-formed C.R.S.
- DOOR FRAME** – Steel door frame with integral torsion springs to secure the frame within the fixture.
- SHIELDING** – Frosted, ribbed acrylic.
- FINISH** – Textured 92% minimum average reflective white anti-microbial powder coating bonded to phosphate-free, multi-stage pretreated metal. All parts painted after fabrication to facilitate installation, increase efficiency, and inhibit corrosion.
- ELECTRICAL** – High-quality mid-power LED board. Rated for 50,000 hours at 70% lumen maintenance (L70). 25°C maximum ambient operating temperature. 50/60 Hz constant current driver.
- MOUNTING** – NEMA Type “G” 15/16” or 1” grid standard. For NEMA Type “NFG” and “SG” 9/16” grid installations, specify EQCLIPS option. Drywall flange kit available, shipped separately, see options. Fixture must be installed prior to Drywall Kit.
- LISTINGS** –
 - cCSAus certified as luminaire suitable for dry or damp locations.
 - Complies with the Buy American Act and other federal regulations. Request certification at hew.com/baa.
- WARRANTY** – 5-year limited warranty, see hew.com/warranty.

ORDERING EXAMPLE: MD2 G - 4 - L30/840 - A - OPTIONS - DIM - UNV

ORDERING INFO

SERIES	CEILING TYPE	LENGTH	LUMENS ^[1]	CRI	CCT	SHIELDING
MD2	G 9/16", 15/16", or 1" grid ^[2]	4 4'	L30 3,000lm	8 80	27 2700K	A
				9 90	30 3000K	A/CHA118
					35 3500K	
					40 4000K	
					50 5000K	A/PC118

Curved frosted ribbed acrylic with clear, high temperature non-prismatic lens

Curved frosted ribbed acrylic with clear polycarbonate lens

OPTIONS

LVC wall plate accessories available, see hew.com for details.

- EM/10W** 10-watt emergency battery
- GLR** Fuse, fast blow^[3]
- EQCLIPS** Earthquake clips^[4]
- LVC1** 1-circuit low-voltage controller, wired for Ambient^[5]
- LVC3DIM** 1-circuit dimming low-voltage controller^[6]
- SG** Single closed-cell foam gasketing^[7]
- DFK-0648AMW** Drywall kit, 6" x 48", anti-microbial white^[8]

CONTROL

See page 3 for ADDITIONAL CONTROL OPTIONS.

- DIM** Dimming driver, 0-10V
- DRV** Non-dimming driver

VOLTAGE

- 120 120V
- 277 277V
- UNV 120-277V

NOTES

- Lumen output based on A Shielding, 80 CRI/4000K CCT. Actual performance may vary +/-5%. See page 2 for FIXTURE PERFORMANCE DATA.
- Must specify EQCLIPS option when 9/16" grid mounting.
- Specify voltage. Requires one per driver.
- 2 per fixture. Optional for 1" grid installations. Required for 9/16" grid mounting.
- 120V or 277V only. Not dimming compatible.
- 120V or 277V only. DIM driver only.
- Field installed.
- See page 3 for DRYWALL KIT (DFK) OPTIONS. Fixture must be installed prior to Drywall Kit (DFK).



MD2 LED Asymmetric Medical Bed Light

FIXTURE PERFORMANCE DATA

LED PACKAGE	A			A/CHA118		
	DELIVERED LUMENS	WATTAGE	EFFICACY (lm/W)	DELIVERED LUMENS	WATTAGE	EFFICACY (lm/W)
4' L30	3014	28.3	107	2829	28.3	100

- Photometrics tested in accordance with IESNA LM-79. Results based on A shielding, 80 CRI/4000K CCT, average wattage for 120V through 277V input, and 25°C ambient temperature. Actual performance may vary +/-5%.
- To calculate lumen output in emergency mode, multiply the battery wattage by the efficacy.
- Use multiplier table to calculate additional options.

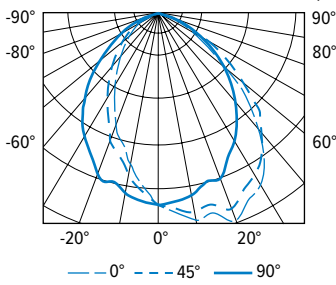
MULTIPLIER TABLES

COLOR TEMPERATURE	
CCT	CONVERSION FACTOR
2700K	0.94
3000K	0.96
3500K	0.97
4000K	1.00
5000K	1.03

2700K	0.77
3000K	0.79
3500K	0.80
4000K	0.83
5000K	0.86

PHOTOMETRY

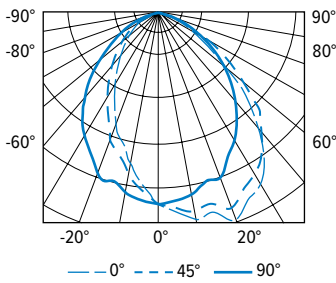
MD2G-4-L30/840-A Total Luminaire Output: 3014 lumens; 28.3 Watts | Efficacy: 106.5 lm/W | 80 CRI; 4000K CCT



CANDLEPOWER DISTRIBUTION	VERTICAL ANGLE	HORIZONTAL ANGLE					ZONAL LUMENS
		0°	45°	90°	135°	180°	
	0	1425	1425	1425	1425	1425	
	5	1496	1459	1391	1333	1296	133
	15	1537	1470	1295	1106	1018	370
	25	1538	1454	1184	882	760	541
	35	1355	1319	1000	660	543	608
	45	946	1052	760	450	360	555
	55	494	656	504	286	222	408
	65	231	341	307	164	134	250
	75	98	133	143	72	64	118
	85	21	30	35	17	14	30
	90	0	0	0	0	0	

LUMEN SUMMARY	ZONE	LUMENS	% FIXTURE
	0 - 30	1044	35
	0 - 40	1652	55
	0 - 60	2615	87
	0 - 90	3014	100
	0 - 180	3014	100

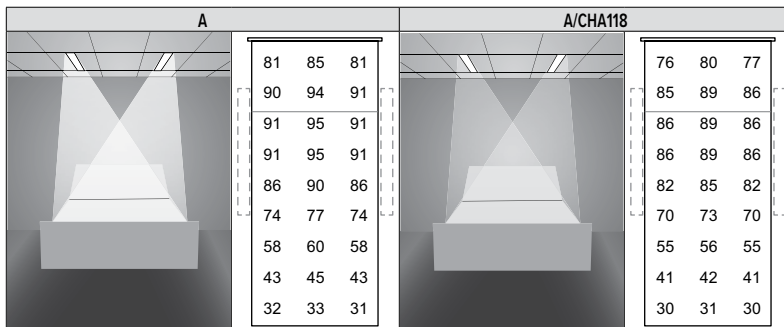
MD2G-4-L30/840-A/CHA118 Total Luminaire Output: 2829 lumens; 28.3 Watts | Efficacy: 99.9 lm/W | 80 CRI; 4000K CCT



CANDLEPOWER DISTRIBUTION	VERTICAL ANGLE	HORIZONTAL ANGLE					ZONAL LUMENS
		0°	45°	90°	135°	180°	
	0	1351	1351	1351	1351	1351	
	5	1418	1384	1325	1269	1240	126
	15	1454	1393	1232	1060	980	352
	25	1459	1377	1131	859	749	518
	35	1288	1250	956	650	543	584
	45	905	994	729	450	370	535
	55	460	607	475	286	230	387
	65	195	292	274	155	129	223
	75	64	92	107	57	50	88
	85	11	13	14	10	10	16
	90	0	0	0	0	0	

LUMEN SUMMARY	ZONE	LUMENS	% FIXTURE
	0 - 30	996	35
	0 - 40	1581	56
	0 - 60	2502	88
	0 - 90	2829	100
	0 - 180	2829	100

FOOTCANDLE ESTIMATOR & DISTRIBUTION



Footcandle calculations based on standard reflectance of 90/60/30 and a light loss factor of 1.0. Fixtures spaced 3' 6" O.C. over 3' wide bed at an 8' ceiling height. Values are for bed surface.



MD2 LED Asymmetric Medical Bed Light

ADDITIONAL CONTROL OPTIONS

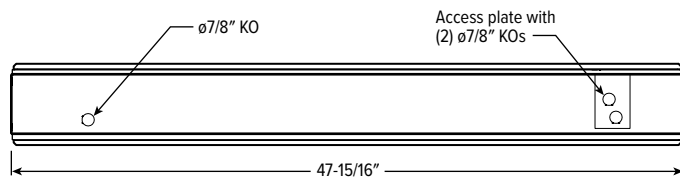
Note: Lumen restrictions apply, consult product builder at hew.com/product-builder.

CATALOG NUMBER	DESCRIPTION
DRV	Driver prewired for non-dimming applications
DIM	Dimming driver prewired for 0-10V low voltage applications
DIM1	1% dimming driver prewired for 0-10V low voltage applications
DIM LINE	Line voltage dimming driver (TRIAC and ELV compatible, 120V only)
DIM TRC	Line voltage dimming driver (TRIAC compatible, 120V only)
SD40	40% step-dimming driver
SD50	50% step-dimming driver
DALI	DALI dimming driver
LDE1	Lutron Hi-lume 1% EcoSystem dimming driver

FIXTURE DETAILS

See hew.com/power-entry for power entry details.

BACKVIEW



DRYWALL KIT (DFK) OPTIONS

ORDERING INFO

EXAMPLE: DFK - 06 48 W			
SERIES	WIDTH	LENGTH	FINISH
DFK Drywall kit	06 6"	48 4'	W White AMW Anti-microbial white

INSTALLATION DIMENSIONS

NOMINAL SIZE	ROUGH-IN		FINISH TRIM SIZE	
	WIDTH (A)	LENGTH (C)	WIDTH (B)	LENGTH (D)
6" x 4'	6-3/8"	48-3/8"	7-5/16"	49-5/16"

TYPICAL INSTALLATION

Refer to table for dimensions.

