

CATALOG #: \_\_\_\_\_

Type: \_\_\_\_\_

PROJECT: \_\_\_\_\_

## FEATURES

- Create scalable, highly functioning smart buildings with Platformatics Power over Ethernet controls
- Tunable white from 3000K to 5000K CCT, minimum 80 CRI
- Designed for use in pairs to asymmetrically illuminate patient beds
- Fixtures can be installed to allow maintenance access without working directly over patient beds
- Maximize energy savings with efficacies as high as 111 lm/W
- Anti-microbial white finish standard
- Made Right Here® in the USA

## SPECIFICATIONS

- HOUSING – 22-gauge die-formed C.R.S.
- DOOR FRAME – Steel door frame with integral torsion springs to secure the frame within the fixture.
- SHIELDING – Frosted, ribbed acrylic.
- FINISH – Textured 92% minimum average reflective white anti-microbial powder coating bonded to phosphate-free, multi-stage pretreated metal. All parts painted after fabrication to facilitate installation, increase efficiency, and inhibit corrosion.
- ELECTRICAL – High quality mid-power LED board. L70 > 50,000 hours per IES TM-21. Low-voltage DC fixture, to be fed by Class 2 power supply. Tunable White products use LEDs of multiple CCTs and may produce a perceptibly different shade of white from single-CCT products at the same CCT. All CCTs are within 3 MacAdam ellipses.
- MOUNTING – Designed for NEMA Type “G” 1” grid ceiling standard. For NEMA Type “NFG” and “SG” 9/16” grid installations, specify EQCLIPS option. For flange installations use the Drywall Kit (DFK), ordered separately. Fixture must be installed prior to Drywall Kit (DFK).
- LISTINGS –
  - cETLus conforms to UL STD 1598 and UL STD 8750. Certified to CAN/CSA STD C22.2 No. 250.0. Suitable for damp locations.
- WARRANTY – 5-year limited warranty, see [hew.com/warranty](http://hew.com/warranty).

## SYSTEM REQUIREMENTS

- PoE-ready luminaires are connected to building power systems through network integration and require other components for complete PoE lighting system
- For additional PoE info, see [hew.com/poe](http://hew.com/poe)
- Consult factory for design support



## ORDERING EXAMPLE: MD2 G - 4 - P25/840 - A - OPTIONS - POE PR

### ORDERING INFO

SERIES	CEILING TYPE <sup>[1]</sup>	LENGTH	LUMENS <sup>[2]</sup>	CRI	CCT
MD2	G NEMA Type “G”, “SS”, and “NFG”	4 4'	P25 2,500lm	8 80	27 2700K
				9 90 <sup>[3]</sup>	30 3000K
					35 3500K
					40 4000K
					50 5000K
	TW				Tunable white (80 CRI, 3000K-5000K)

### SHIELDING

- A** Curved frosted ribbed acrylic
- A/CHA118** Curved frosted ribbed acrylic with clear, high temperature non-prismatic lens
- A/PC118** Curved frosted ribbed acrylic with clear polycarbonate lens

### OPTIONS

- EQCLIPS** Earthquake clips <sup>[4]</sup>
- BC** Fixture prewired for bedside controls. <sup>[5]</sup>
- SG** Single closed-cell foam gasketing <sup>[6]</sup>
- DFK-0648AMW** Drywall kit, 6” x 48”, anti-microbial white <sup>[7]</sup>

### CONTROL <sup>[8]</sup>

- POE PR** Power over Ethernet, Platformatics-ready

### NOTES

- <sup>1</sup> When using in NEMA Type “SS” or “NFG” applications, must specify EQCLIPS option. For flange installations use the Drywall Kit (DFK), see Options. Fixture must be installed prior to Drywall Kit (DFK).
- <sup>2</sup> Lumens based on A Shielding, 80 CRI, 4000K for single CCT and TW. Actual lumens may vary +/-5%, see page 2 for FIXTURE PERFORMANCE DATA.
- <sup>3</sup> Extended lead times may apply. Consult factory for availability. Not available with tunable white.
- <sup>4</sup> 2 per fixture. Optional for 1” grid installations. Required for 9/16” grid mounting.
- <sup>5</sup> Button functionality determined with gateway software.
- <sup>6</sup> Field installed.
- <sup>7</sup> Must be ordered separately. Fixture must be installed prior to Drywall Kit (DFK).
- <sup>8</sup> See page 3 for NODE CONNECTION DETAILS. For additional PoE info, see [hew.com/poe](http://hew.com/poe).



# MD2 PoE | tunable WHITE Asymmetric Medical Bed Light

## FIXTURE PERFORMANCE DATA

### STANDARD

4'	LED PACKAGE	A			A/CHA118		
		DELIVERED LUMENS	WATTAGE	EFFICACY (lm/W)	DELIVERED LUMENS	WATTAGE	EFFICACY (lm/W)
	P25	2535	22.7	111.8	2380	22.7	105.0

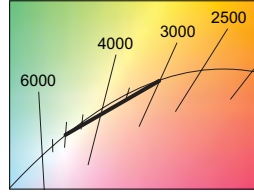
### TUNABLE WHITE

4'	LED PACKAGE	A			A/CHA118		
		DELIVERED LUMENS	WATTAGE	EFFICACY (lm/W)	DELIVERED LUMENS	WATTAGE	EFFICACY (lm/W)
	P25	2507	25.1	99.9	2353	25.1	93.8

### MULTIPLIER TABLE

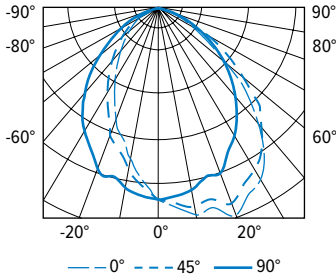
	COLOR TEMPERATURE		
	CCT	LUMENS	
		STANDARD	TUNABLE WHITE
80 CRI	2700K	0.94	-
	3000K	0.96	0.95
	3500K	0.97	0.98
	4000K	1.00	1.00
	5000K	1.03	0.96
90 CRI	2700K	0.77	-
	3000K	0.79	-
	3500K	0.80	-
	4000K	0.83	-
	5000K	0.86	-

- Photometrics tested in accordance with IESNA LM-79. Results shown are based on 25°C ambient temperature.
- Standard results based on 3500K standard, 80 CRI and A Shielding, actual lumens may vary +/-5%
- Tunable white results based on 4000K standard, 80 CRI, actual lumens may vary +/-5%
- Use multiplier table to calculate additional options.



## PHOTOMETRY

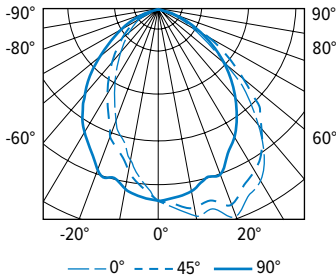
**MD2G-4-P25/840-A** Total Luminaire Output: 2535 lumens; 22.7 Watts | Efficacy: 112 lm/W | 80 CRI; 4000K CCT



CANDLEPOWER DISTRIBUTION	VERTICAL ANGLE	HORIZONTAL ANGLE					ZONAL LUMENS
		0°	45°	90°	135°	180°	
	0	1198	1198	1198	1198	1198	
	5	1258	1227	1170	1121	1090	112
	15	1293	1236	1089	930	856	311
	25	1294	1223	996	741	639	455
	35	1139	1109	841	555	457	511
	45	796	885	639	378	302	467
	55	416	551	424	240	187	344
	65	194	287	258	138	112	211
	75	82	112	120	61	54	99
	85	18	25	29	15	12	25
	90	0	0	0	0	0	

LUMEN SUMMARY	ZONE	LUMENS	% FIXTURE
	0 - 30	878	35
	0 - 40	1389	55
	0 - 60	2200	87
	0 - 90	2535	100
	0 - 180	2535	100

**MD2G-4-P25/840-CHA118** Total Luminaire Output: 2380 lumens; 22.7 Watts | Efficacy: 105 lm/W | 80 CRI; 4000K CCT



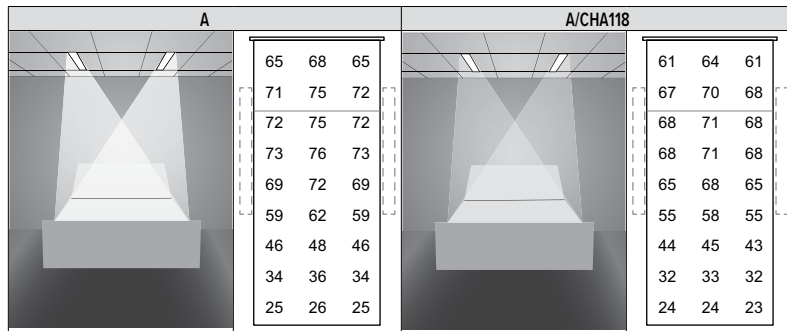
CANDLEPOWER DISTRIBUTION	VERTICAL ANGLE	HORIZONTAL ANGLE					ZONAL LUMENS
		0°	45°	90°	135°	180°	
	0	1136	1136	1136	1136	1136	
	5	1193	1165	1114	1067	1043	106
	15	1224	1172	1037	892	824	296
	25	1228	1159	952	723	630	436
	35	1084	1051	805	547	457	491
	45	761	836	613	378	311	450
	55	387	510	399	241	193	326
	65	164	246	230	130	108	188
	75	54	78	90	48	42	74
	85	9	11	12	8	8	13
	90	0	0	0	0	0	

LUMEN SUMMARY	ZONE	LUMENS	% FIXTURE
	0 - 30	838	35
	0 - 40	1330	56
	0 - 60	2105	88
	0 - 90	2380	100
	0 - 180	2380	100



# MD2 PoE | tunable **WHITE** Asymmetric Medical Bed Light

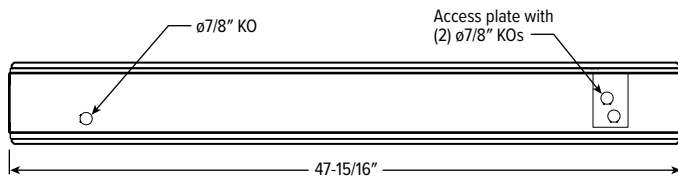
## FOOTCANDLE ESTIMATOR & DISTRIBUTION



Footcandle calculations based on standard reflectance of 90/60/30 and a light loss factor of 1.0. Fixtures spaced 3' 6" O.C. over 3' wide bed at an 8' ceiling height. Values are for bed surface.

## FIXTURE DETAILS

### BACKVIEW



## NODE CONNECTION DETAILS

Includes 24" cable with 4-position mating connector for Platformatics POE-LN2 node. See node spec sheet for details: [platformatics.com/product/poe-ln2](http://platformatics.com/product/poe-ln2)

