

CATALOG #: _____

Type: _____

PROJECT: _____



FEATURES

- Deliver scalable, data-driven smart buildings with PoE-enabled fixtures and controls
- Specify as a single fixture or in pairs to customize ambient, exam, and reading light output
- Illuminate exam surfaces asymmetrically when installed in pairs and meet IESNA guidelines
- Fixtures can be installed to allow maintenance access without working directly over patient beds
- Double-gasketed sani-shield protects fixture
- Made Right Here® in the USA

SPECIFICATIONS

- HOUSING** – 20-gauge die-formed and welded C.R.S.
- DOOR FRAME** – .050" extruded regressed aluminum frame with curved diffuse acrylic lens and clear acrylic sani-shield. Fully enclosed spring-loaded cam latches.
- SHIELDING** – Internal curved diffuse ribbed acrylic with external clear, non-prismatic sani-shield lens.
- FINISH** – 92% minimum average reflective white anti-microbial powder coat, bonded to phosphate-free, multi-stage pretreated metal. Salt spray tested, 1,000 hours (ASTM B117). All parts painted after fabrication to facilitate installation, increase efficiency, and inhibit corrosion.
- ELECTRICAL** – High-quality mid-power LED boards. L70 >50,000 hours per IES TM-21. Low-voltage DC fixture, to be fed by Class 2 power supply. Tunable White products use LEDs of multiple CCTs and may produce a perceptibly different shade of white from single-CCT products at the same CCT. All CCTs are within 3 MacAdam ellipses.
- MOUNTING** – NEMA Type "G" 15/16" or 1" grid standard. For NEMA Type "NFG" and "SG" 9/16" grid installations, specify EQCLIPS option. Drywall flange kit available, shipped separately, see options. Fixture must be installed prior to Drywall Kit.
- LISTINGS** –
 - cCSAus certified as luminaire suitable for dry or damp locations.
 - Complies with the Buy American Act and other federal regulations. Request certification at hew.com/baa.
- WARRANTY** – 5-year limited warranty, see hew.com/warranty.

SYSTEM REQUIREMENTS

- PoE-ready luminaires are connected to building power systems through network integration and require other components for complete PoE lighting system
- For additional PoE info, see hew.com/poe

ORDERING EXAMPLE: MD 4+4AE G - 4 - P30/P80/840 - A - OPTIONS - POE PR

ORDERING INFO

SERIES	STYLE	CEILING TYPE	LENGTH	LUMENS ⁽¹⁾	CRI	CCT	TW	Control
MD	See table below	G 9/16", 15/16", or 1" grid ⁽²⁾	4 4'	See table below	8 80	30 3000K	TW2	Tunable white (3000K–5000K) ⁽⁴⁾ Tunable white (2700K-6500K) ⁽⁵⁾
					9 90 ⁽³⁾	35 3500K		
						40 4000K		
						50 5000K		

SHIELDING	OPTIONS	CONTROL ⁽⁶⁾
A Curved diffuse ribbed acrylic with clear, acrylic lens	EQCLIPS Earthquake clips ⁽⁷⁾ TG Triple gasket ⁽⁸⁾ BC Fixture prewired for bedside controls, button functionality determined with gateway software. Color temperature in Exam compartment different than Ambient or Reading. Example: MD4+4AEG-4-P30/P80/840-A-(835) ⁽⁹⁾ DFK-0848AMW Drywall kit, 8" x 48", anti-microbial white ⁽¹⁰⁾ TP Tamper resistant tri-groove screws ⁽¹¹⁾	POE PR Power over Ethernet-ready
A/PC080 Clear, non-prismatic polycarbonate lens, .080" thick	(8___)	

ACCESSORIES

TPTG TOOL Tamper-resistant tool for tri-groove screws. ⁽¹²⁾

CONFIGURATIONS

STYLE	DESCRIPTION	AMBIENT LUMENS	EXAM LUMENS	READING LUMENS	CONFIGURATION
4A	Single fixture, ambient only	P45 4,500	—	—	
4AR	Single fixture, ambient & reading Specify fixture direction: L for Left and R for Right			900	
4E	Single fixture, exam only	—	P50 5,000	—	
4ER	Single fixture, exam & reading Specify fixture direction: L for Left and R for Right			900	
4AE	Single fixture, ambient & exam	P15 1,500	P40 4,000	—	
4AER	Single fixture, ambient, exam & reading Specify fixture direction: L for Left and R for Right			900	
4+4A	Pair of fixtures, ambient only	P90 9,000	—	—	
4+4AR	Pair of fixtures, ambient & reading			1,900	
4+4E	Pair of fixtures, exam only	—	P100 10,000	—	
4+4ER	Pair of fixtures, exam & reading			1,900	
4+4AE	Pair of fixtures, ambient & exam	P30 3,000	P80 8,000	—	
4+4AER	Pair of fixtures, ambient, exam & reading			1,900	

NOTES

- Lumens based on A Shielding, 80 CRI/4000K CCT. Actual performance may vary +/-5%. See page 2 for FIXTURE PERFORMANCE DATA.
- Must specify EQCLIPS option when 9/16" grid mounting.
- Extended lead times may apply. Consult factory for availability.
- For Ambient section only. Exam portion 840, additional color temperatures available, see options. Not available with 4E, 4ER, 4+4E, and 4+4ER Styles.
- For Ambient section only. Exam portion 840, additional color temperatures available, see options. Not available with 4E, 4ER, 4+4E, and 4+4ER Styles.
- For additional PoE connection details, consult factory.
- 2 clips per fixture. Optional for 1" grid installations. Required for 9/16" grid mounting.
- Field-installed. See page 3 for GASKETING DETAILS..
- Must specify color temperature (27, 30, 35, 50 or 65). Not available with Tunable White.
- 2 kits required for 4+4 style fixtures. Fixture must be installed prior to Drywall Kit. See page 4 for DRYWALL KIT (DFK) OPTIONS.
- Requires a tamper-resistant tool, see Accessories.
- Tamper-resistant tool must be ordered separately. Please specify quantity required per project.



MD4 PoE | tunable WHITE Architectural Multi-Function Medical

FIXTURE PERFORMANCE DATA

STANDARD

	STYLE	LED PACKAGE	DELIVERED LUMENS	WATTAGE	EFFICACY (lm/W)	SYSTEM WATTAGE	SYSTEM EFFICACY
MD4A	A	P45	4,514	44.3	102	44.3	102
	R	—	938	9.8	96	—	—
MD4+4A	A	P90	9,029	88.5	102	88.5	102
	R	—	1,875	19.6	96	—	—
MD4AE	A	P15/P40	1,540	14.1	109	47.9	116
	E		4,002	33.7	119		
	R	—	938	9.8	96	—	—
MD4+4AE	A	P30/P80	3,080	28.3	109	95.7	116
	E		8,005	67.5	119		
	R	—	1,875	19.6	96	—	—
MD4E	E	P50	5,037	42.4	119	42.4	119
	R	—	938	9.8	96	—	—
MD4+4E	E	P100	10,075	84.7	119	84.7	119
	R	—	1,875	19.6	96	—	—

MULTIPLIER TABLES

	COLOR TEMPERATURE			
	CCT	STANDARD	TW	TW2
80 CRI	2700K	—	—	0.93
	3000K	0.96	0.95	0.95
	3500K	0.97	0.98	0.98
	4000K	1.00	1.00	1.00
	5000K	1.03	0.96	1.02
6500K	—	—	—	1.01

	COLOR TEMPERATURE			
	CCT	STANDARD	TW	TW2
90 CRI	2700K	—	—	0.93
	3000K	0.79	0.91	0.95
	3500K	0.80	0.96	0.98
	4000K	0.83	1.00	1.00
	5000K	0.86	1.03	1.03
6500K	—	—	—	1.02

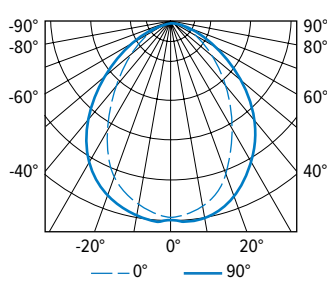
TUNABLE WHITE

	STYLE	LED PACKAGE	DELIVERED LUMENS	WATTAGE	EFFICACY (lm/W)	SYSTEM WATTAGE	SYSTEM EFFICACY
MD4A	A	P45	4,533	49.5	92	59.7	91
	R	—	911	10.2	89	—	—
MD4+4A	A	P90	9,066	99.0	92	119.4	91
	R	—	1,823	20.4	89	—	—
MD4AE	A	P15/P40	1,519	16.7	91	56.4	98
	E		4,024	39.7	101		
	R	—	911	10.2	89	—	—
MD4+4AE	A	P30/P80	3,038	33.5	91	112.9	98
	E		8,047	79.4	101		
	R	—	1,823	20.4	89	—	—

- Photometrics tested in accordance with IESNA LM-79. Results based on A shielding, 80 CRI/4000K CCT, average wattage for 120V through 277V input, and 25°C ambient temperature. Actual performance may vary +/-5%.
- When specifying fixtures with Reading compartment, add R wattage to system wattage to find total fixture wattage.
- Use multiplier table to calculate additional options.

PHOTOMETRY

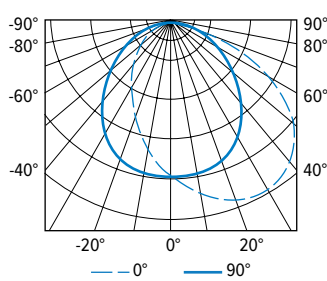
MD4AG-P45/840-A Ambient Only Total Luminaire Output: 4514 lumens; 44.3 Watts | Efficacy: 102 lm/W | 80 CRI; 4000K CCT



VERTICAL ANGLE	HORIZONTAL ANGLE					ZONAL LUMENS
	0°	45°	90°	135°	180°	
0	2343	2343	2343	2343	2343	
5	2303	2345	2378	2329	2309	222
15	2116	2234	2305	2191	2140	623
25	1728	1974	2082	1915	1765	884
35	1280	1607	1761	1459	1264	948
45	895	1173	1300	962	789	831
55	574	757	805	511	416	593
65	239	387	422	213	128	312
75	55	97	154	30	24	93
85	0	4	12	2	2	9
90	0	0	0	0	0	

LUMEN SUMMARY	ZONE	LUMENS	% FIXTURE
	0 - 30	1729	38
	0 - 60	4100	91
	0 - 90	4514	100
	0 - 180	4514	100

MD4ERRG-4-P50/840-A Exam Only Total Luminaire Output: 5037 lumens; 42.4 Watts | Efficacy: 119 lm/W | 80 CRI; 4000K CCT



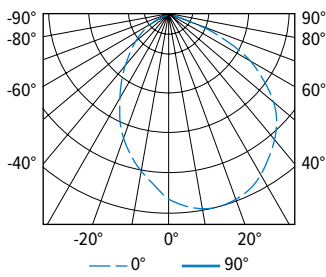
VERTICAL ANGLE	HORIZONTAL ANGLE					ZONAL LUMENS
	0°	45°	90°	135°	180°	
0	1935	1935	1935	1935	1935	
5	2075	2044	1962	1782	1841	183
15	2299	2209	1907	1479	1466	525
25	2411	2257	1763	1155	1081	797
35	2374	2174	1526	883	775	964
45	2165	1911	1230	635	533	992
55	1683	1482	843	399	362	850
65	827	929	477	212	180	534
75	171	277	164	53	52	180
85	0	3	3	2	3	13
90	0	0	0	0	0	

LUMEN SUMMARY	ZONE	LUMENS	% FIXTURE
	0 - 30	1504	30
	0 - 60	4311	86
	0 - 90	5037	100
	0 - 180	5037	100



MD4 PoE | tunable **WHITE** Architectural Multi-Function Medical

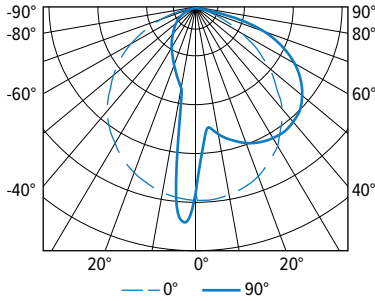
MD4AEG-4-P15/P40/840-A Ambient & Exam Total Luminaire Output: 5542 lumens; 47.8 Watts | Efficacy: 116 lm/W | 80 CRI; 4000K CCT



CANDLEPOWER DISTRIBUTION	VERTICAL ANGLE	HORIZONTAL ANGLE					ZONAL LUMENS
		0°	45°	90°	135°	180°	
	0	2337	2337	2337	2337	2337	
	5	2434	2424	2371	2210	2251	221
	15	2548	2517	2302	1922	1895	629
	25	2505	2466	2111	1571	1461	934
	35	2323	2276	1813	1199	1047	1089
	45	2026	1918	1420	833	692	1072
	55	1533	1435	945	492	430	878
	65	738	870	523	241	187	531
	75	155	253	183	52	49	174
	85	0	3	6	2	3	13
	90	0	0	0	0	0	

LUMEN SUMMARY	ZONE	LUMENS	% FIXTURE
	0 - 30	1785	32
	0 - 60	4824	87
	0 - 90	5542	100
	0 - 180	5542	100

MD4AERRG-4-P15/P40/840-A Reading Only Total Luminaire Output: 938 lumens; 9.8 Watts | Efficacy: 96 lm/W | 80 CRI; 4000K CCT

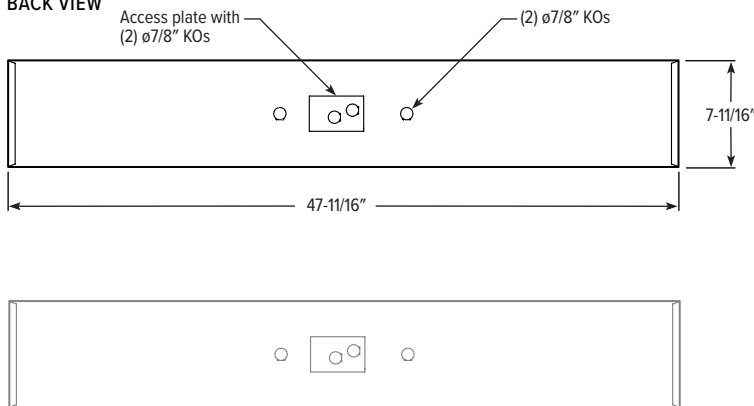


CANDLEPOWER DISTRIBUTION	VERTICAL ANGLE	HORIZONTAL ANGLE					ZONAL LUMENS
		0°	45°	90°	135°	180°	
	0	476	476	476	476	476	
	5	315	347	494	581	527	41
	15	351	325	477	220	183	93
	25	381	351	440	176	139	131
	35	391	350	380	136	107	161
	45	376	311	295	102	79	171
	55	330	268	201	70	57	158
	65	253	194	99	41	35	119
	75	121	94	27	17	14	57
	85	2	2	0	2	2	6
	90	0	0	0	0	0	

LUMEN SUMMARY	ZONE	LUMENS	% FIXTURE
	0 - 30	265	28
	0 - 60	755	81
	0 - 90	938	100
	0 - 180	938	100

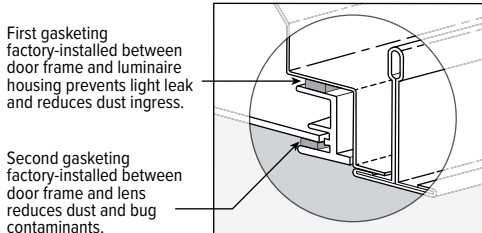
FIXTURE DETAILS

BACK VIEW

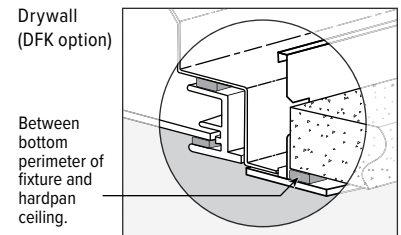
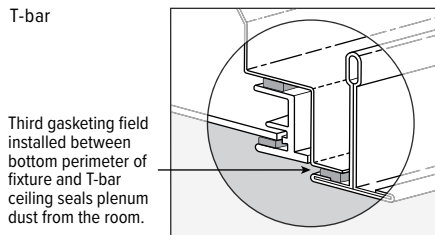


GASKETING DETAILS

DOUBLE GASKETING (STANDARD)



TRIPLE GASKETING (TG OPTION)



MD4 PoE | tunable **WHITE** Architectural Multi-Function Medical

DRYWALL KIT (DFK) OPTIONS

ORDERING INFO

EXAMPLE: DFK - 08 48 W			
SERIES	WIDTH	LENGTH	FINISH
DFK Drywall kit	08 8"	48 4'	W White AMW Anti-microbial white

INSTALLATION DIMENSIONS

NOMINAL SIZE	ROUGH-IN		FINISH TRIM SIZE	
	WIDTH (A)	LENGTH (C)	WIDTH (B)	LENGTH (D)
8" x 4'	8-3/8"	48-3/8"	9-5/16"	49-5/16"

TYPICAL INSTALLATION

Refer to table for dimensions.

