

PROJECT: \_\_\_\_\_



<b>SERIES</b>	<b>ILLUMINATED LENGTH</b> <sup>[1]</sup>	<b>LUMEN PACKAGE (EXAMPLE: L8/8TWU/L8/8TWD)</b>		
<b>MX2WUD</b>	Lengths specified in feet and inches using 1" increments, 2' minimum. Example: 12'00 = 12'-0"	Specify lumen packages: <b>U</b> for Uplight and <b>D</b> for Downlight		
	<b>PRODUCT BUILDER</b> Simplify ordering & layout design with the Williams Linear Product Builder at <a href="http://hew.com/product-builder">hew.com/product-builder</a>	<b>LUMENS</b> <sup>[2]</sup>	<b>COLOR</b>	<b>U or D</b>
		<b>L8</b> 800lm	<b>8TW</b> Tunable white (80 CRI, 3000K-5000K)	<b>U</b> Uplight <b>D</b> Downlight

<b>SHIELDING UP</b>	<b>SHIELDING DOWN</b>	<b>OPTIONS</b> <sup>[3]</sup>
<b>F</b> Flat	<b>F</b> Flat	<i>See page 2 for FINISH OPTIONS.</i>
<b>FA</b> Flat with asymmetric optic	<b>FA</b> Flat with asymmetric optic	<b>EM/10WLP</b> Low-profile 10-watt emergency battery <sup>[5]</sup>
<b>G</b> Glowing edge lens, 3/8"	<b>G</b> Glowing edge lens, 3/8"	<b>EM/10WRM</b> Remote mount 10-watt emergency battery
	<b>D</b> Drop lens, 1"	<b>EM/10WRM/RTS</b> Remote mount 10-watt emergency battery with regressed test switch
	<b>R</b> Regressed lens, 1" <sup>[4]</sup>	<b>(L___)</b> Additional lower lumen packages available <sup>[6]</sup> Example: 600 lumens = MX2WUD-12'00-L8/8TWU/L8/8TWD-(L6U/L6D)

<b>CONTROL</b> <sup>[7]</sup>	<b>DRIVER</b>	<b>VOLTAGE</b>
<i>See page 4 for ADDITIONAL CONTROL OPTIONS.</i>	<i>See page 4 for DRIVER DETAILS.</i>	<b>120</b> 120V
– None	<b>DALI</b> Driver prewired for DALI applications	<b>277</b> 277V
<b>AWN R</b> Lutron Athena wireless node integral fixture control, RF only <sup>[8]</sup>	<b>DIM</b> (1) 0-10V signal to control dimming (1) 0-10V signal to control CCT	<b>UNV</b> 120-277V
<b>AWN S</b> Lutron Athena wireless node integral fixture control, RF with daylight and occupancy sensing <sup>[9]</sup>	<b>DMX</b> Driver prewired for DMX applications	
	<b>DSR</b> Sensor-ready driver without external dimming wires (D4i DALI-2). <sup>[10]</sup>	
	<b>LD2</b> Lutron DALI-2 digital driver, 1%	

1 Endcaps add 1/4" to overall specified length.  
2 Lumens per foot output based on F Shielding, 80 CRI/4000K CCT. Actual performance may vary  $\pm$  5%. See page 2 for **FIXTURE PERFORMANCE DATA**. Additional lumen packages available, see Options.  
3 Remote EM batteries: max remote distance 50'. Large remote box provided. Specify CEC in the option code when California Energy Commission regulations are required. See page 3 for **REMOTE MOUNT BATTERY DETAILS**.  
4 Increases fixture height. See page 3 for **SHIELDING DETAIL S**.

5 Not available with fixtures less than 4'.  
6 (L4U/L4D) lumen package minimum. Specify in increments of 100 lumen lumens. Option must be specified with next higher lumen package.  
7 Sensors not available in fixtures less than 48". Sensor recommended for use in downlight orientation only. Reduces portion of lit fixture, consult factory. See page 3 for **SENSOR & NODE PLACEMENT DETAILS**.  
8 DSR and LD2 Drivers only.  
9 DSR and LD2 Drivers only.  
10 Lutron Athena Controls only.

# MX2WUD tunable WHITE 2" Continuous Up/Down – Wall

## FIXTURE PERFORMANCE DATA

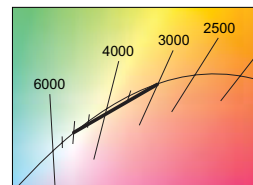
PER FOOT (1600 LUMENS PER FOOT MAXIMUM)		
TOTAL DELIVERED LUMENS	TOTAL WATTAGE	EFFICACY (lm/W)
1650	13.1	126

- Photometrics tested in accordance with IESNA LM-79. Results based on F shielding for Up and Down compartments, 80 CRI/3500K CCT, average wattage for 120V through 277V input, and 25°C ambient temperature. Actual performance may vary +/-5%.
- To calculate lumen output in emergency mode, multiply the battery wattage by the efficacy.
- Use multiplier tables to calculate additional options.

## MULTIPLIER TABLES

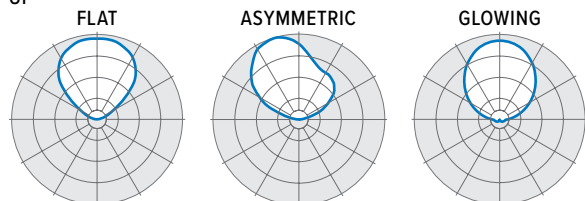
CCT	CONVERSION FACTOR	
	LUMENS	WATTAGE
3000K	0.95	1.04
3500K	0.98	1.02
4000K	1.00	1.00
5000K	0.96	1.04

SHIELDING	
LENS	CONVERSION FACTOR
F	1.00
FA (Up)	0.96
FA (Down)	0.82
G	0.98
D	1.05
R	0.91

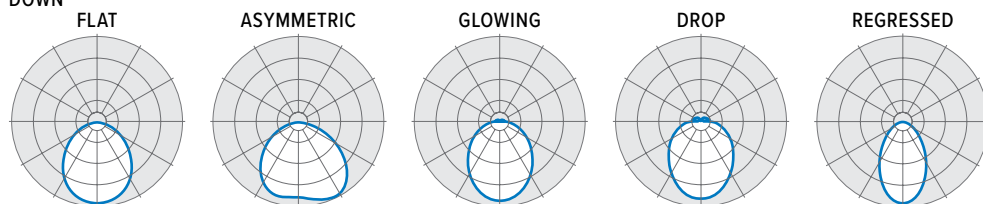


## PHOTOMETRY

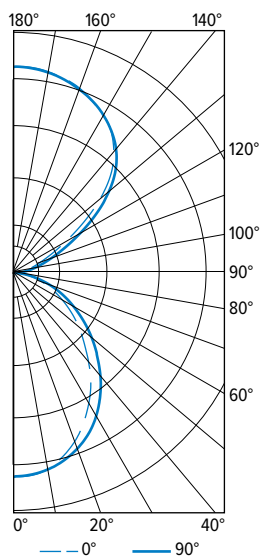
### UP



### DOWN



MX2WUD-4'00-L8/8TWU/L8/8TWD-F/F-DALI Total Luminaire Output: 6600 lumens; 52.4 Watts | Efficacy: 126 lm/W | 80 CRI; 4000K CCT

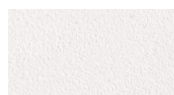


VERTICAL ANGLE	HORIZONTAL ANGLE			ZONAL LUMENS
	0°	45°	90°	
0	1409	1409	1409	
5	1398	1399	1403	133
15	1329	1320	1296	371
25	1194	1155	1107	532
35	993	935	879	586
45	764	700	641	543
55	544	495	449	446
65	349	315	285	315
75	174	161	149	173
85	41	46	47	51
90	3	5	4	
95	46	32	26	39
105	153	117	102	132
115	318	269	223	272
125	609	560	489	496
135	928	896	870	688
145	1141	1134	1131	709
155	1278	1281	1274	590
165	1368	1373	1375	388
175	1418	1413	1423	135
180	1423	1423	1423	

LUMEN SUMMARY	ZONE	LUMENS	% FIXTURE
	0 - 30	1036	16
	0 - 40	1622	25
	0 - 60	2611	40
	0 - 90	3150	48
	90 - 120	444	7
	90 - 130	940	14
	90 - 150	2338	35
	90 - 180	3450	52
	0 - 180	6600	100

## FINISH OPTIONS

### WHITE



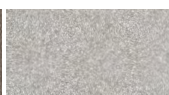
### BLACK



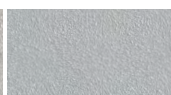
### BRONZE



### NICKEL



### SILVER



### ALUM



For custom color, please specify RAL code or a manufacturer code with description. All custom colors other than RAL require two sample swatches, minimum 1" square.



H.E. Williams, Inc.

Carthage, Missouri

www.hew.com

417-358-4065

Designed and Manufactured in the USA

REV.01/27/25.JL

Continuous

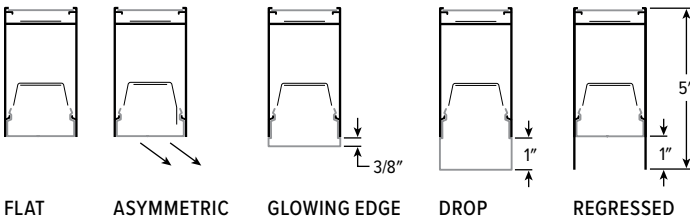
Page 2 of 4

Information contained herein is subject to change without notice.

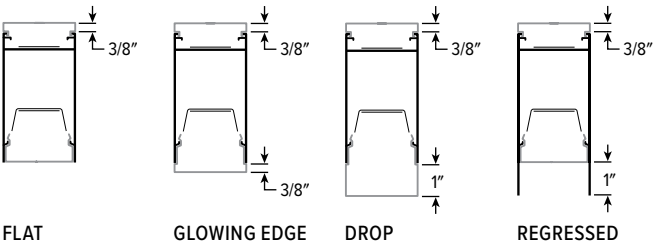
# MX2WUD tunable WHITE 2" Continuous Up/Down – Wall

## SHIELDING DETAILS

### FLAT UPLIGHT



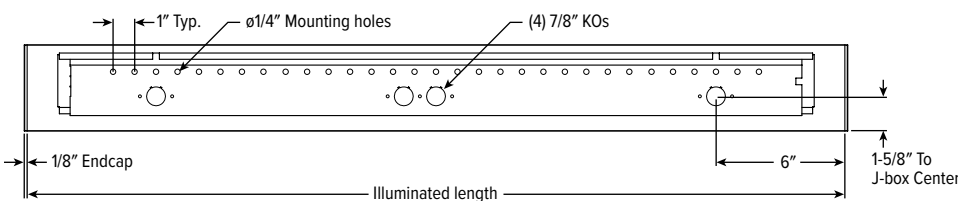
### GLOWING EDGE UPLIGHT



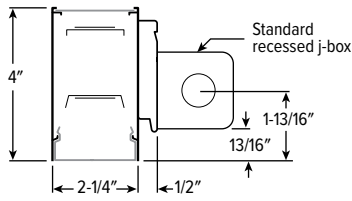
## FIXTURE DETAILS

See [hew.com/power-entry](http://hew.com/power-entry) for power entry details.

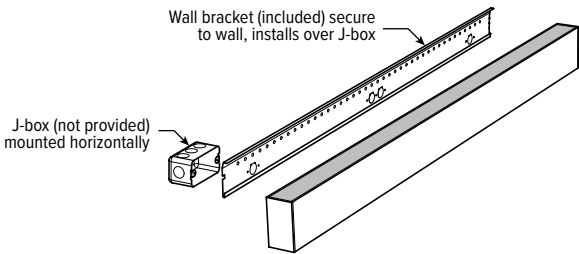
### BACK VIEW



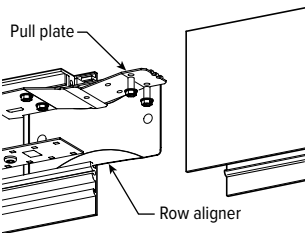
### CROSS SECTION



### MOUNTING



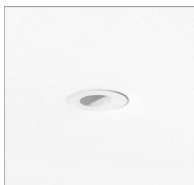
### ROW ALIGNMENT SYSTEM



Installer friendly row aligners ensure seamless joining between fixtures while factory installed pull plate locks extrusions in place without disassembly of fixture internals.

## REMOTE MOUNT BATTERY DETAILS

### EM/10WRM/RTS



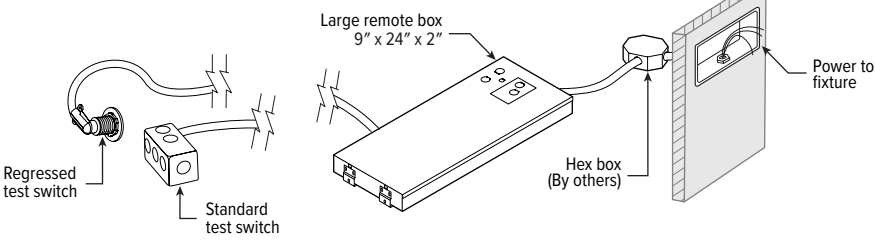
Regressed test switch  
ø1-3/4"

### EM/10WRM



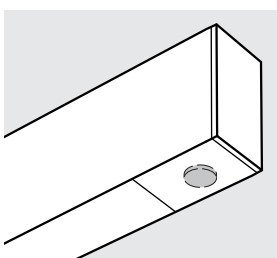
Standard test switch  
2-3/4" x 4-1/2"

Max remote distance is 50', connection by others.

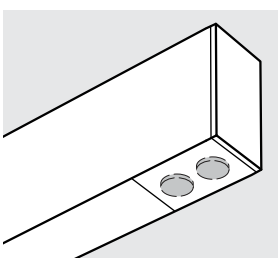


## SENSOR & NODE PLACEMENT DETAILS

### WS-FS | WS-LMFS



### AWN-R | AWNS



# MX2WUD tunable WHITE 2" Continuous Up/Down – Wall

## ADDITIONAL CONTROL OPTIONS

Sensor recommended for use in downlight orientation only. Reduces portion of lit fixture, consult factory.

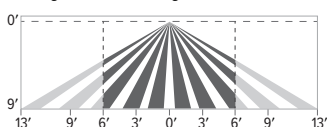
**AWNS** Lutron Athena wireless node integral fixture control, RF with daylight and occupancy sensing. DSR and LD2 Drivers only.

SPECIFICATIONS	
TYPE	Radio Frequency
MOUNTING HEIGHT	8' – 12'
DETECTION ANGLE	360°
TEMPERATURE RANGE	0° to 55°C
RELATIVE HUMIDITY	0 to 90%, non-condensing
COMMISSIONING	Clear Connect gateway – Type X with app (iOS or Android)
MANUFACTURER	Lutron



### SENSOR COVERAGE PATTERNS

9' height: ø12' coverage



Motion Sensor Coverage

CEILING HEIGHT	COVERAGE AREA (SQ FT)
8'	114
9'	144
10'	178
12'	256

### SENSOR DETAIL



Dimensions: ø1-1/8"

## ATHENA CONTROL OPTIONS

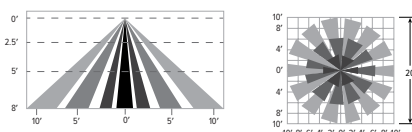
CATALOG NUMBER	DESCRIPTION
AWNRR	Lutron Athena wireless node integral fixture control, RF only, for use with sensor-ready driver (D4i DALI-2) or DALI-2 digital driver 1%.
AWNS	Lutron Athena wireless node integral fixture control, RF with daylight and occupancy sensing, for use with sensor-ready driver (D4i DALI-2) or DALI-2 digital driver 1%.
AWNRR-BL	Lutron Athena wireless node integral fixture control, RF only, for use with sensor-ready driver (D4i DALI-2) or DALI-2 digital driver 1%, black finish.
AWNS-BL	Lutron Athena wireless node integral fixture control, RF with daylight and occupancy sensing, for use with sensor-ready driver (D4i DALI-2) or DALI-2 digital driver 1%, black finish.

**OCCWS-FS-305-L6-PP-120/277** Wattstopper PIR motion and daylight hold off sensor with power pack, 120/277V

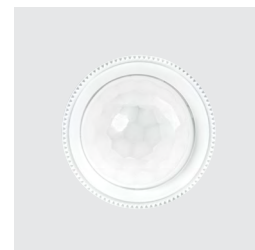
SPECIFICATIONS	
TYPE	PIR Motion + Daylight Hold Off
MOUNTING HEIGHT	8'
LENS	Indoor, non-wet location use
DETECTION ANGLE	360°
TEMPERATURE RANGE	-40° to 55°C
RELATIVE HUMIDITY	5% to 95%, non-condensing
COMMISSIONING	Dials under lens

### SENSOR COVERAGE PATTERNS

8' height: ø20' coverage



### SENSOR DETAIL



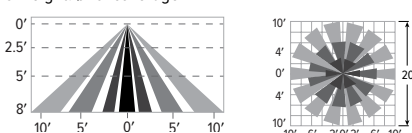
Dimensions: ø1-5/16"

**OCCWS-LMFS-601-PP-120/277** Wattstopper PIR motion and daylight sensor with power pack, 120/277V

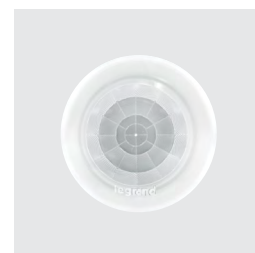
SPECIFICATIONS	
TYPE	PIR Motion + Daylight
MOUNTING HEIGHT	8' – 12'
LENS	Up to 300 sq/ft coverage
DETECTION ANGLE	360°
TEMPERATURE RANGE	0° to 50°C
RELATIVE HUMIDITY	0 to 90%, non-condensing
COMMISSIONING	App (iOS or Android)

### SENSOR COVERAGE PATTERNS

8' height: ø20' coverage



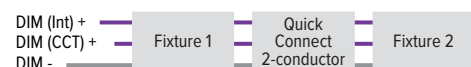
### SENSOR DETAIL



Dimensions: ø1-5/16"

## DRIVER DETAILS

### DIM



### DMX



### DALI



### LD2



H.E. Williams, Inc. ■ Carthage, Missouri ■ [www.hew.com](http://www.hew.com) ■ 417-358-4065 ■ Designed and Manufactured in the USA  
Information contained herein is subject to change without notice.

Continuous  
Page 4 of 4