

CATALOG #: _____

TYPE: _____

PROJECT: _____



FEATURES

- Create elegant spaces with a seamless, continuous row of illumination in an ADA Compliant design
- Specify in one inch increments to create a perfect fit
- Flat, glowing edge, drop and regressed lenses give designers a variety of looks
- Asymmetric optic directs light for targeted illumination
- High-performance up to 124 lm/W
- Linear extrusion contains snap-in light rails for ease of installation and maintenance
- Wall bracket design evenly spaces fixtures automatically
- Factory installed row alignment system creates straight rows with ease.
- Versatile MX2 system includes recessed, surface, suspended and in-wall mounting, see hew.com/MX2
- Wireless in-fixture control solutions available
- Made Right Here® in the USA

SPECIFICATIONS

- **HOUSING** – Extruded aluminum with die-cast end plates.
- **SHIELDING** – Extruded diffuse acrylic lens.
- **FINISH** – Textured matte white polyester TGIC powder coat bonded to phosphate-free, multi-stage pretreated metal. All parts painted after fabrication to facilitate installation, increase efficiency, and inhibit corrosion.
- **ELECTRICAL** – High-quality mid-power LED boards. Reported L70: >54,000 hours. Reported L90: 52,000 hours. Estimated L70: 170,000 hours. 25°C maximum ambient operating temperature. 50/60 Hz constant current driver.
- **MOUNTING** – Wall mount. Powder coated, die-formed C.R.S. receiving bracket mounted to fixture which attaches to wall mounted bracket.
- **LISTINGS** –
 - cCSAus certified as luminaire suitable for dry or damp locations.
 - ADA Compliant
 - UL 924 available, see Options.
 - Build America, Buy America (BABA) and Buy American Act (BAA) compliant. Request certification at hew.com/buy-american
- **WARRANTY** – 5-year limited warranty, see hew.com/warranty.

ORDERING EXAMPLE: MX2WU - 12'00 - L8/835 - F - OPTIONS - CONTROL/DIM - UNV

SERIES	ILLUMINATED LENGTH ^[1]	LUMENS ^[2]	CRI	CCT	SHIELDING
MX2WD Down	Lengths specified in feet and inches using 1" increments, 2' minimum. Example: 12'00 = 12'-0"	L4 400lm	8 80	27 2700K	F Flat
MX2WU Up		L8 800lm	9 90	30 3000K	FA Flat with asymmetric optic
		L12 1200lm		35 3500K	G Glowing edge lens, 3/8"
				40 4000K	D Drop lens, 1" ^[3]
				50 5000K	R Regressed lens, 1" ^[4]

PRODUCT BUILDER
Simplify ordering & layout design with the Williams Linear Product Builder at hew.com/product-builder

OPTIONS ^[5]

See page 3 for **FINISH OPTIONS**.

EM/10WLP	Low-profile 10-watt emergency battery ^[7]
EM/10WRM	Remote mount 10-watt emergency battery
EM/10WRM/RTS	Remote mount 10-watt emergency battery with regressed test switch
(L__)	Additional lower lumen packages available ^[8] Example: 600 lumens = MX2WU-12'00-L8/835-(L6)
GEN	Approved for UL 924 emergency generator circuit through-feed wiring ^[9]

CONTROL ^[6]

See page 5 for **ADDITIONAL CONTROL OPTIONS**.

–	None
AVI-LVFA	Avi-on wireless fixture control ^[10]
AVI-LVFA-CS2-PIR	Avi-on wireless fixture control with PIR motion and daylight sensor ^[11]
AWNRR	Lutron Athena wireless node integral fixture control, RF only ^[12]
AWNS	Lutron Athena wireless node integral fixture control, RF with daylight and occupancy sensing ^[13]

DRIVER

See page 6 for **ADDITIONAL DRIVER OPTIONS**.

DIM	Driver with external 0-10V dimming wires	120 120V
DA	Driver with 12V auxiliary power, without external dimming wires ^[14]	277 277V
DSR	Sensor-ready driver without external dimming wires (D4i DALI-2) ^[15]	UNV 120-277V
		347 347V ^[16]

VOLTAGE

NOTES

- Endcaps add 1/4" to overall specified length.
- Lumens per foot output based on F Shielding, 80 CRI/3500K CCT. Actual performance may vary ± 5%. See page 2 for **FIXTURE PERFORMANCE DATA**. Additional lumen packages available, see Options.
- MX2WD only.
- Increases fixture height. See page 2 for **SHIELDING DETAILS**.
- Remote EM batteries: max remote distance 50'. Large remote box provided. Specify CEC in the option code when California Energy Commission regulations are required. See page 3 for **REMOTE MOUNT BATTERY DETAILS**.
- Sensor recommended for use in downlight orientation only. Reduces portion of lit fixture, consult factory. See page 4 for **SENSOR & NODE PLACEMENT DETAILS**. See page 4 for **AVI-ON BLUETOOTH WIRELESS CONTROL DETAILS**.
- Not available with fixtures less than 4'.
- (L4) lumen package minimum. Specify in increments of 100 nominal lumens. Option must be specified with next higher lumen package.
- MX2WD only. Maximum mounting height is 20.5' (6.2 m). Minimum lumen output is 400 lm/ft. See hew.com/UL924 for details.
- DA Driver only.
- DA Driver only.
- DA and DSR Drivers only.
- DA and DSR Drivers only.
- Avi-on and Lutron Athena Controls only.
- Lutron Vibe and Athena Controls only.
- Not available with EM batteries, control sensors, DA, or DSR Drivers.



MX2W^{LED} 2" Continuous – Wall

FIXTURE PERFORMANCE DATA

	DOWN (PER FOOT)			UP (PER FOOT)		
	DELIVERED LUMENS	WATTAGE	EFFICACY (lm/W)	DELIVERED LUMENS	WATTAGE	EFFICACY (lm/W)
L4	375.8	3.4	111	416.9	3.4	123
L8	751.5	6.7	112	833.8	6.7	124
L12	1127.3	10.1	112	1250.8	10.1	124

- Photometrics tested in accordance with IESNA LM-79. Results based on F shielding 80 CRI/3500K CCT, average wattage for 120V through 277V input, and 25°C ambient temperature. Actual performance may vary +/-5%.
- To calculate lumen output in emergency mode, multiply the battery wattage by the efficacy.
- Use multiplier table to calculate additional options.

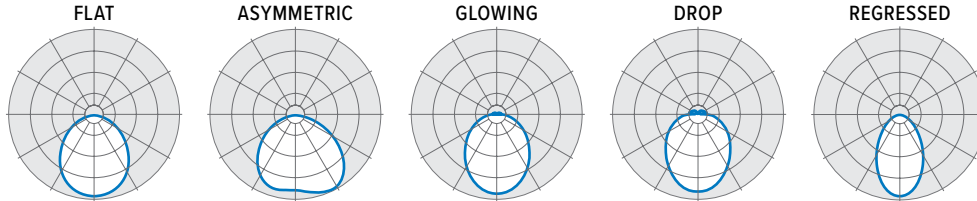
MULTIPLIER TABLES

	COLOR TEMPERATURE	
	CCT	CONVERSION FACTOR
80 CRI	2700K	0.97
	3000K	0.99
	3500K	1.00
	4000K	1.03
	5000K	1.06
90 CRI	2700K	0.80
	3000K	0.82
	3500K	0.83
	4000K	0.86
	5000K	0.89

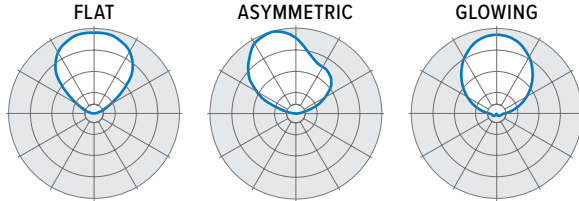
SHIELDING	
LENS	CONVERSION FACTOR
F	1.00
FW	0.92
FA (MX2WU)	0.96
FA (MX2WD)	0.82
G	0.98
D	1.05
R	0.91

PHOTOMETRY

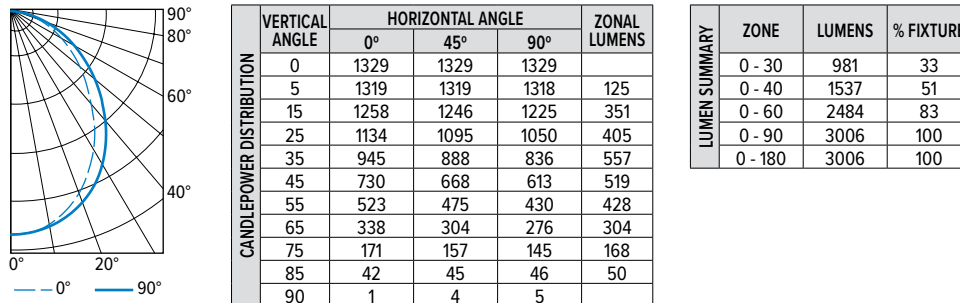
MX2WD



MX2WU

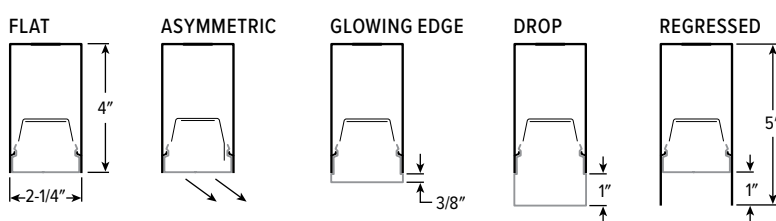


MX2WD-4'00-L8/835-F-DIM Total Luminaire Output: 3006 lumens; 27 Watts | Efficacy: 111 lm/W | 80 CRI; 3500K CCT

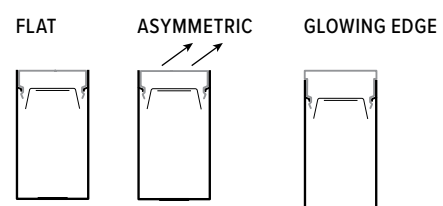


SHIELDING DETAILS

MX2WD

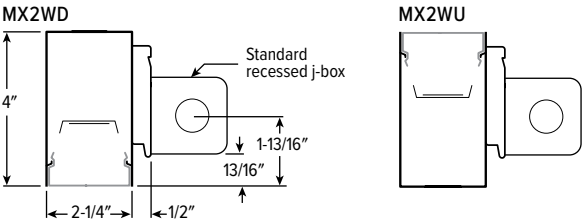


MX2WU



MX2W^{LED} 2" Continuous – Wall

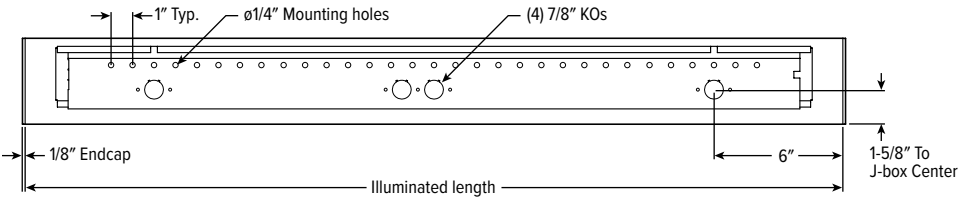
CROSS SECTIONS



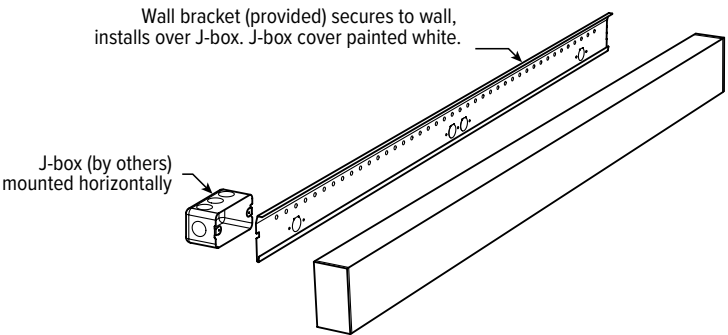
FIXTURE DETAILS

See hew.com/power-entry for power entry details.

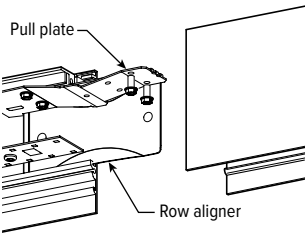
BACK VIEW



MOUNTING



ROW ALIGNMENT SYSTEM



Installer friendly row aligners ensure seamless joining between fixtures while factory installed pull plate locks extrusions in place without disassembly of fixture internals.

REMOTE MOUNT BATTERY DETAILS

EM/10WRM/RTS



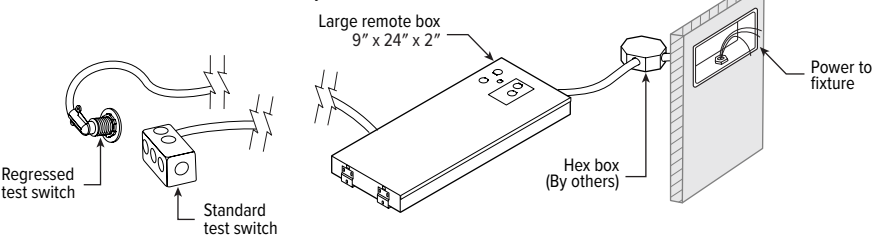
Regressed test switch
ø1-3/4"

EM/10WRM



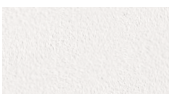
Standard test switch
2-3/4" x 4-1/2"

Max remote distance is 50', connection by others.



FINISH OPTIONS

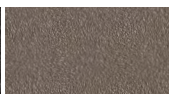
WHITE



BLACK



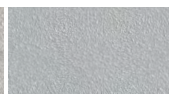
BRONZE



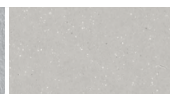
NICKEL



SILVER



ALUM

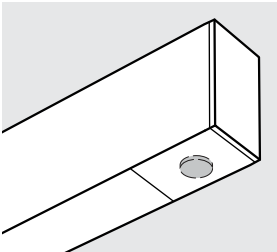


For custom color, please specify RAL code or a manufacturer code with description. All custom colors other than RAL require two sample swatches, minimum 1" square.



MX2W^{LED} 2" Continuous – Wall

SENSOR & NODE PLACEMENT DETAILS



AVI-ON BLUETOOTH WIRELESS CONTROL DETAILS

FEATURES

Simple

- Gateway-free distributed control
- Contractor friendly installation
- Occupancy/vacancy/daylight sensing

Scalable

- Virtually unlimited network size
- Spans small offices to large warehouses
- Flexible control strategies

Secure

- Optional cloud connectivity
- UL IoT platinum security rating
- DLC 5.0 compliant

COMMISSIONING & INSTALLATION TOOLS

Avi-on mobile apps provide intuitive, quick installation and commissioning. Pro tools are available to qualified installers. Live commissioning training and on-site or remote support by Avi-on must be ordered separately through Avi-on.



Commissioning
Mobile App

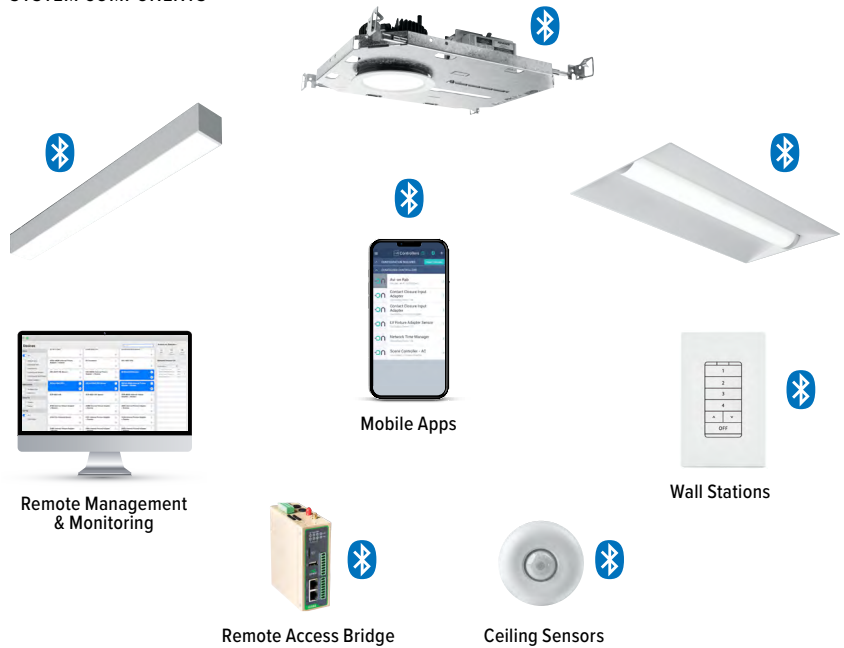


Zone Scanner
Web App



Commissioning
Pro App

SYSTEM COMPONENTS



The Bluetooth® word mark and logos are registered trademarks owned by Bluetooth SIG, Inc. and any use of such marks by Avi-on is under license. Other trademarks and trade names are those of their respective owners.

ACCESSORIES

WALL STATIONS	
AVI-B-2401AC-1	Scene controller - buttons numbered 1-4 and up/down/off, 120-277VAC
AVI-B-2402BAT-1	Scene controller - buttons numbered 1-4 and up/down/off, battery powered
AVI-B-2401AC-2	Dimmer with presets - buttons with percentages and up/down/off, 120-277VAC
AVI-B-2402BAT-2	Dimmer with presets - buttons with percentages and up/down/off, battery powered
AVI-B-2401AC-3	Two button control on/off or hold to dim up/down, 120-277VAC
AVI-B-2402BAT-3	Two button control on/off or hold to dim up/down, battery powered


NETWORK	
AVI-RAB-LTE	Remote access bridge
AVI-NTM	Network time manager with battery backup
CEILING MOUNT SENSORS	
AVI-KIT-SEN-DUCM	PIR motion and ultrasonic sensor kit
AVI-KIT-SEN-ICM	PIR motion and photocell sensor kit

For load controllers and additional accessory info, see hew.com/avi-on



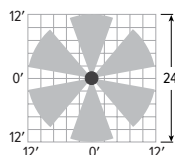
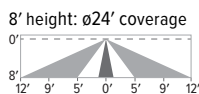
MX2W^{LED} 2" Continuous – Wall

AVI-LVFA-CS2-PIR Avi-on wireless fixture control with PIR motion and daylight sensor. DA Driver only.

SPECIFICATIONS	
TYPE	PIR Motion + Daylight
MOUNTING HEIGHT	8' – 10'
DETECTION ANGLE	360°
TEMPERATURE RANGE	-30° to 50°C
RELATIVE HUMIDITY	10 to 80% non-condensing
IP RATING	IP20
MANUFACTURER	Avi-On
	

SENSOR COVERAGE PATTERNS

Side View




SENSOR DETAIL



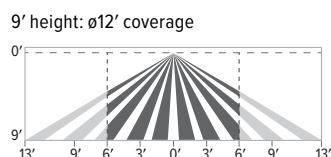
Dimensions: 13/16" x 2-1/4"

ADDITIONAL CONTROL OPTIONS

AWNS Lutron Athena wireless node integral fixture control, RF with daylight and occupancy sensing. DA and DSR Drivers only.

SPECIFICATIONS	
TYPE	Radio Frequency
MOUNTING HEIGHT	8' – 12'
DETECTION ANGLE	360°
TEMPERATURE RANGE	0° to 55°C
RELATIVE HUMIDITY	0 to 90%, non-condensing
COMMISSIONING	Clear Connect gateway – Type X with app (iOS or Android)
MANUFACTURER	Lutron
	

SENSOR COVERAGE PATTERNS



Motion Sensor Coverage

CEILING HEIGHT	COVERAGE AREA (SQ FT)
8'	114
9'	144
10'	178
12'	256

SENSOR DETAIL



Dimensions: ø1-1/8"

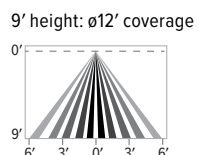
ATHENA CONTROL OPTIONS

CATALOG NUMBER	DESCRIPTION
AWNDR	Lutron Athena wireless node integral fixture control, RF only, for use with D4i DALI-2 or driver with 12V auxiliary power.
AWNS	Lutron Athena wireless node integral fixture control, RF with daylight and occupancy sensing, for use with D4i DALI-2 or driver with 12V auxiliary power.
AWNDR-BL	Lutron Athena wireless node integral fixture control, RF only, for use with D4i DALI-2 or driver with 12V auxiliary power, black finish.
AWNS-BL	Lutron Athena wireless node integral fixture control, RF with daylight and occupancy sensing, for use with D4i DALI-2 or driver with 12V auxiliary power, black finish.

VDO Lutron Vive integral fixture control, RF with daylight and occupancy sensor (DFCSJ-OEM-OCC). DSR or LDE Drivers only. LDE drivers require driver interface

SPECIFICATIONS	
TYPE	PIR Motion + Daylight
MOUNTING HEIGHT	8' – 12'
DETECTION ANGLE	360°
TEMPERATURE RANGE	0° to 55°C
RELATIVE HUMIDITY	0 to 90%, non-condensing
COMMISSIONING	App (iOS or Android)
MANUFACTURER	Lutron

SENSOR COVERAGE PATTERNS



Motion Sensor Coverage

CEILING HEIGHT	COVERAGE AREA (SQ FT)
8'	114
9'	144
10'	178
12'	256

SENSOR DETAIL



Dimensions: 2-11/16" x 1"

VIVE CONTROL OPTIONS

CATALOG NUMBER	DESCRIPTION
VRF	Lutron Vive integral fixture control, RF only (DFCSJ-OEM-RF), for use with sensor-ready driver
VDO	Lutron Vive integral fixture control, RF with daylight and occupancy sensor (DFCSJ-OEM-OCC), for use with sensor-ready driver
VRF/DBI	Lutron Vive integral fixture control, RF only (DFCSJ-OEM-RF) and digital link interface, for use with Lutron Hi-lume 1% EcoSystem dimming LED driver
VDO/DBI	Lutron Vive integral fixture control, RF with daylight and occupancy sensor (DFCSJ-OEM-OCC) and digital link interface, for use with Lutron Hi-lume 1% EcoSystem dimming LED driver



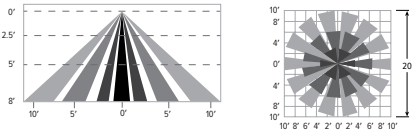
MX2W^{LED} 2" Continuous – Wall

OCCWS-FS-305-L6-PP-120/277 Wattstopper PIR motion and daylight hold off sensor with power pack, 120/277V

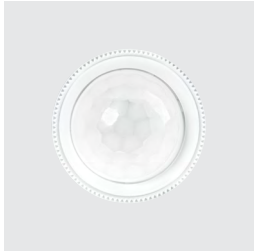
SPECIFICATIONS	
TYPE	PIR Motion + Daylight Hold Off
MOUNTING HEIGHT	8'
LENS	Indoor, non-wet location use
DETECTION ANGLE	360°
TEMPERATURE RANGE	-40° to 55°C
RELATIVE HUMIDITY	5% to 95%, non-condensing
COMMISSIONING	Dials under lens

SENSOR COVERAGE PATTERNS

8' height: ø20' coverage



SENSOR DETAIL



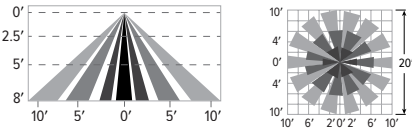
Dimensions: ø1-5/16"

OCCWS-LMFS-601-PP-120/277 Wattstopper PIR motion and daylight sensor with power pack, 120/277V

SPECIFICATIONS	
TYPE	PIR Motion + Daylight
MOUNTING HEIGHT	8' – 12'
LENS	Up to 300 sq/ft coverage
DETECTION ANGLE	360°
TEMPERATURE RANGE	0° to 50°C
RELATIVE HUMIDITY	0 to 90%, non-condensing
COMMISSIONING	App (iOS or Android)

SENSOR COVERAGE PATTERNS

8' height: ø20' coverage



SENSOR DETAIL



Dimensions: ø1-5/16"

ADDITIONAL DRIVER OPTIONS

Note: Lumen restrictions apply, consult product builder at hew.com/product-builder

CATALOG NUMBER	DESCRIPTION
DIM	Driver with external dimming wires prewired for 0-10V low voltage applications
DIM1	1% driver with external dimming wires prewired for 0-10V low voltage applications
DIM LINE	Line voltage dimming driver (TRIAC and ELV compatible, 120V only)
DIM TRC	Line voltage dimming driver (TRIAC compatible, 120V only)
DA	Driver with 12V auxiliary power, without external dimming wires
DSR	Sensor-ready driver without external dimming wires (D4i DALI-2)
SD40	40% step-dimming driver
SD50	50% step-dimming driver
DALI	DALI dimming driver
LDE1	Lutron Hi-lume 1% EcoSystem dimming driver

