

CATALOG #: _____

TYPE: _____

PROJECT: _____



FEATURES

- Support human-centric design with adaptive, individualized lighting using tunable white light
- Create elegant spaces with a seamless, continuous row of illumination in an ADA Compliant design
- Specify in one inch increments to create a perfect fit
- Flat, glowing edge, drop and regressed lenses give designers a variety of looks
- Asymmetric optic directs light for targeted illumination
- High-performance up to 132 lm/W
- Linear extrusion contains snap-in light rails for ease of installation and maintenance
- Wall bracket design evenly spaces fixtures automatically
- Factory installed row alignment system creates straight rows with ease.
- Versatile MX2 system includes recessed, surface, suspended and in-wall mounting, see hew.com
- Diffuse acrylic lens provides uniform illumination for visual comfort
- Wireless in-fixture control solutions available
- Made Right Here® in the USA

SPECIFICATIONS

- HOUSING** – Extruded aluminum with die-cast end plates.
- SHIELDING** – Extruded diffuse acrylic lens.
- FINISH** – Textured matte white polyester TGIC powder coat bonded to phosphate-free, multi-stage pretreated metal. All parts painted after fabrication to facilitate installation, increase efficiency, and inhibit corrosion.
- ELECTRICAL** – High-quality mid-power LED board. L70 > 60,000 hours per IES TM-21. Tunable White products use LEDs of multiple CCTs and may produce a perceptibly different shade of white from single-CCT products at the same CCT. All CCTs are within 3 MacAdam ellipses. 50/60 Hz constant current driver.
- MOUNTING** – Wall mount. Powder coated, die-formed C.R.S. receiving bracket mounted to fixture which attaches to wall mounted bracket.
- LISTINGS** –
 - cCSAus certified as luminaire suitable for dry or damp locations.
 - ADA Compliant
 - Build America, Buy America (BABA) and Buy American Act (BAA) compliant. Request certification at hew.com/buy-american
- WARRANTY** – 5-year limited warranty, see hew.com/warranty.

ORDERING EXAMPLE: MX2WU - 12'00 - L8/8TW - F - OPTIONS - CONTROL/DALI - UNV

SERIES	ILLUMINATED LENGTH ^[1]	LUMENS ^[2]	COLOR	SHIELDING
MX2WD Down	Lengths specified in feet and inches using 1" increments, 2' minimum.	L8 800lm	8TW Tunable white (80 CRI, 3000K-5000K)	F Flat
MX2WU Up	Example: 12'00 = 12'-0"			FA Flat with asymmetric optic
PRODUCT BUILDER				
Simplify ordering & layout design with the Williams Linear Product Builder at hew.com/product-builder				
				G Glowing edge lens, 3/8"
				D Drop lens, 1" ^[3]
				R Regressed lens, 1" ^[4]

OPTIONS ^[5]

See page 3 for FINISH OPTIONS.

EM/10WLP	Low-profile 10-watt emergency battery ^[7]
EM/10WRM	Remote mount 10-watt emergency battery
EM/10WRM/RTS	Remote mount 10-watt emergency battery with regressed test switch
(L__)	Additional lower lumen packages available ^[8]
	Example: 600 lumens = MX2WU-12'00-L8/8TW-(L6)

CONTROL ^[6]

See page 4 for ADDITIONAL CONTROL OPTIONS.

–	None
AWN R	Lutron Athena wireless node integral fixture control, RF only ^[9]
AWNS	Lutron Athena wireless node integral fixture control, RF with daylight and occupancy sensing ^[10]

DRIVER

See page 5 for DRIVER DETAILS.

DALI Driver prewired for DALI applications

DIM (1) 0-10V signal to control dimming
(1) 0-10V signal to control CCT

DMX Driver prewired for DMX applications

DSR Sensor-ready driver without external dimming wires (DALI-D2). ^[11]

LD2 Lutron DALI-2 digital driver, 1%

VOLTAGE

120 120V

277 277V

UNV 120-277V

NOTES

¹ Endcaps add 1/4" to overall specified length.

² Lumens per foot output based on F Shielding, 80 CRI/4000K CCT. Actual performance may vary ± 5%. See page 2 for FIXTURE PERFORMANCE DATA. Additional lumen packages available, see Options.

³ MX2WD only.

⁴ Increases fixture height. See page 2 for SHIELDING DETAILS.

⁵ Remote EM batteries: max remote distance 50'. Large remote box provided. Specify CEC in the option code when California Energy Commission regulations are required. See page 3 for REMOTE MOUNT BATTERY DETAILS.

⁶ Sensor recommended for use in downlight orientation only. Reduces portion of lit fixture, consult factory. See page 4 for SENSOR & NODE PLACEMENT DETAILS.

⁷ Not available with fixtures less than 4'.

⁸ (L4) lumen package minimum. Specify in increments of 100 nominal lumens. Option must be specified with next higher lumen package.

⁹ DSR and LD2 Drivers only.

¹⁰ DSR and LD2 Drivers only.

¹¹ Lutron Athena Controls only.



MX2W tunable WHITE

2" Continuous – Wall

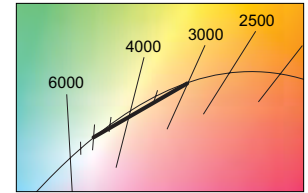
FIXTURE PERFORMANCE DATA

DOWN (PER FOOT)		
	DELIVERED LUMENS	WATTAGE
L8	785	6.6
UP (PER FOOT)		
	DELIVERED LUMENS	WATTAGE
L8	865	6.6

MULTIPLIER TABLES

CONVERSION FACTOR		
CCT	LUMENS	WATTAGE
3000K	0.95	1.04
3500K	0.98	1.02
4000K	1.00	1.00
5000K	0.96	1.04

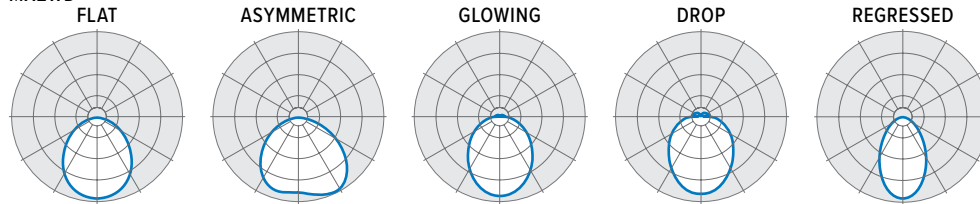
SHIELDING	
LENS	CONVERSION FACTOR
F	1.00
FW	0.92
FA (MX2WU)	0.96
FA (MX2WD)	0.82
G	0.98
D	1.05
R	0.91



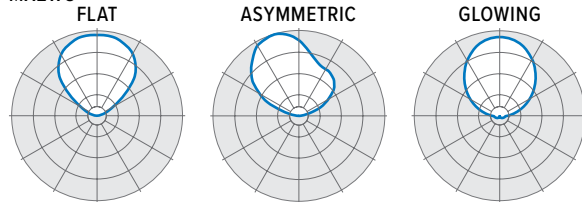
- Photometrics tested in accordance with IESNA LM-79. Results based on F shielding, 80 CRI/4000K CCT, average wattage for 120V through 277V input, and 25°C ambient temperature. Actual performance may vary +/-5%.
- To calculate lumen output in emergency mode, multiply the battery wattage by the efficacy.
- Use multiplier tables to calculate additional options.

PHOTOMETRY

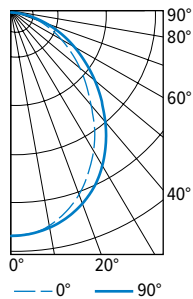
MX2WD



MX2WU



MX2WD-4'00-L8/8TW-F-DALI Total Luminaire Output: 3140 lumens; 26.4 Watts | Efficacy: 118.9 lm/W | 80 CRI; 4000K CCT

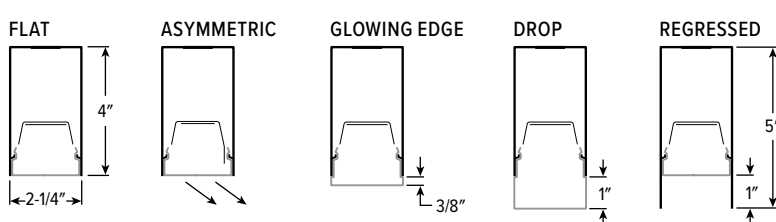


VERTICAL ANGLE	HORIZONTAL ANGLE			ZONAL LUMENS
	0°	45°	90°	
0	1389	1389	1389	
5	1378	1378	1377	131
15	1314	1302	1280	367
25	1185	1144	1097	527
35	987	928	874	582
45	763	698	640	542
55	546	496	449	447
65	354	318	288	318
75	179	164	152	176
85	43	47	48	52
90	1	4	5	

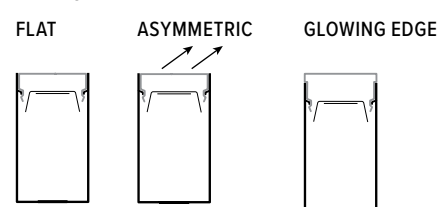
LUMEN SUMMARY	ZONE	LUMENS	% FIXTURE
	0 - 30	1024	33
	0 - 40	1066	51
	0 - 60	2595	83
	0 - 90	3140	100
	0 - 180	3140	100

SHIELDING DETAILS

MX2WD



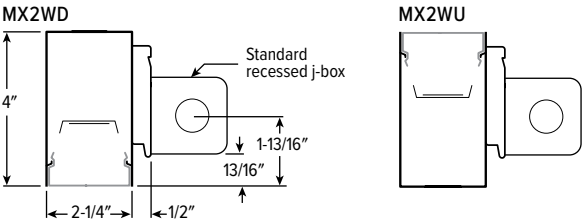
MX2WU



MX2W tunable WHITE

2" Continuous – Wall

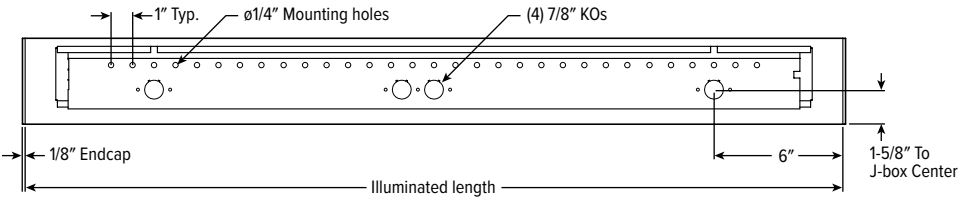
CROSS SECTIONS



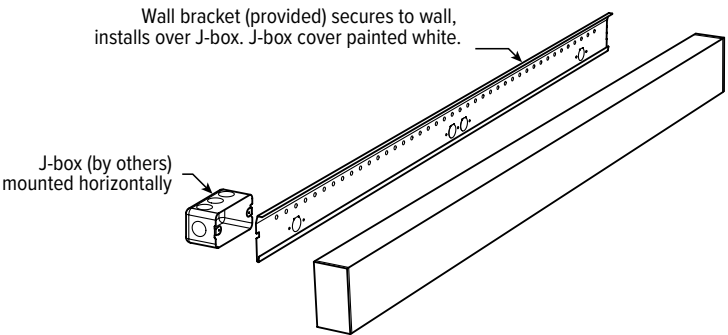
FIXTURE DETAILS

See hew.com/power-entry for power entry details.

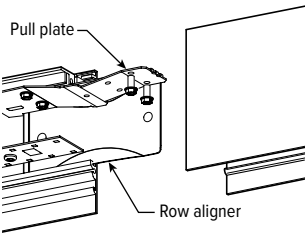
BACK VIEW



MOUNTING



ROW ALIGNMENT SYSTEM



Installer friendly row aligners ensure seamless joining between fixtures while factory installed pull plate locks extrusions in place without disassembly of fixture internals.

REMOTE MOUNT BATTERY DETAILS

EM/10WRM/RTS



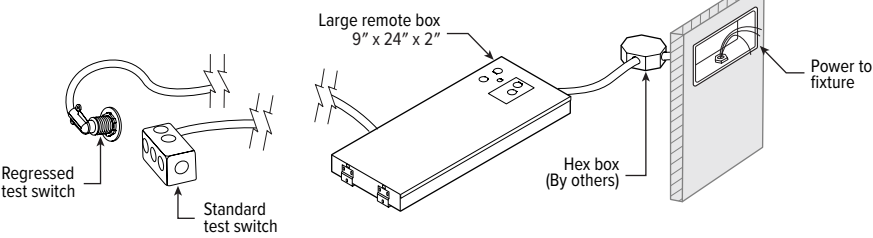
Regressed test switch
ø1-3/4"

EM/10WRM



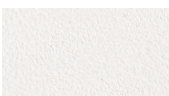
Standard test switch
2-3/4" x 4-1/2"

Max remote distance is 50', connection by others.



FINISH OPTIONS

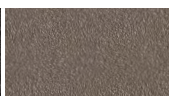
WHITE



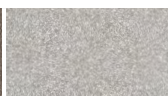
BLACK



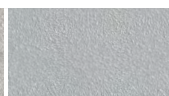
BRONZE



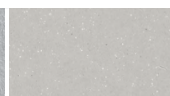
NICKEL



SILVER



ALUM



For custom color, please specify RAL code or a manufacturer code with description. All custom colors other than RAL require two sample swatches, minimum 1" square.



H.E. Williams, Inc.

Carthage, Missouri

www.hew.com

417-358-4065

Designed and Manufactured in the USA

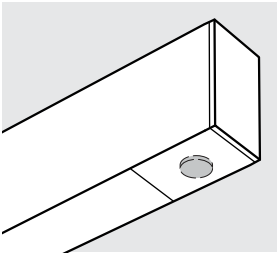
REV.01/27/25.JL

Continuous

Page 3 of 5

MX2W tunable WHITE 2" Continuous – Wall

SENSOR & NODE PLACEMENT DETAILS



ADDITIONAL CONTROL OPTIONS

Sensor recommended for use in downlight orientation only. Reduces portion of lit fixture, consult factory.

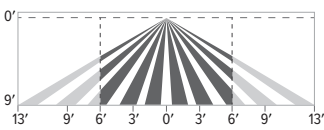
AWNS Lutron Athena wireless node integral fixture control, RF with daylight and occupancy sensing. DSR and LD2 Drivers only.

SPECIFICATIONS	
TYPE	Radio Frequency
MOUNTING HEIGHT	8' – 12'
DETECTION ANGLE	360°
TEMPERATURE RANGE	0° to 55°C
RELATIVE HUMIDITY	0 to 90%, non-condensing
COMMISSIONING	Clear Connect gateway – Type X with app (iOS or Android)
MANUFACTURER	Lutron



SENSOR COVERAGE PATTERNS

9' height: ø12' coverage



Motion Sensor Coverage

CEILING HEIGHT	COVERAGE AREA (SQ FT)
8'	114
9'	144
10'	178
12'	256

SENSOR DETAIL



Dimensions: ø1-1/8"

ATHENA CONTROL OPTIONS

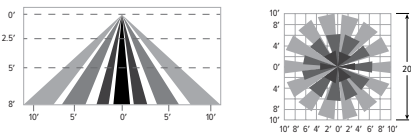
CATALOG NUMBER	DESCRIPTION
AWNRR	Lutron Athena wireless node integral fixture control, RF only, for use with sensor-ready driver (D4i DALI-2) or DALI-2 digital driver 1%.
AWNS	Lutron Athena wireless node integral fixture control, RF with daylight and occupancy sensing, for use with sensor-ready driver (D4i DALI-2) or DALI-2 digital driver 1%.
AWNRR-BL	Lutron Athena wireless node integral fixture control, RF only, for use with sensor-ready driver (D4i DALI-2) or DALI-2 digital driver 1%, black finish.
AWNS-BL	Lutron Athena wireless node integral fixture control, RF with daylight and occupancy sensing, for use with sensor-ready driver (D4i DALI-2) or DALI-2 digital driver 1%, black finish.

OCCWS-FS-305-L6-PP-120/277 Wattstopper PIR motion and daylight hold off sensor with power pack, 120/277V

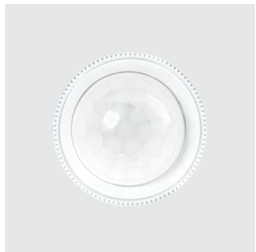
SPECIFICATIONS	
TYPE	PIR Motion + Daylight Hold Off
MOUNTING HEIGHT	8'
LENS	Indoor, non-wet location use
DETECTION ANGLE	360°
TEMPERATURE RANGE	-40° to 55°C
RELATIVE HUMIDITY	5% to 95%, non-condensing
COMMISSIONING	Dials under lens

SENSOR COVERAGE PATTERNS

8' height: ø20' coverage



SENSOR DETAIL



Dimensions: ø1-5/16"



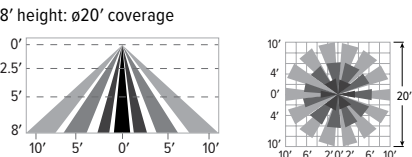
MX2W tunable WHITE

2" Continuous – Wall

OCCWS-LMFS-601-PP-120/277 Wattstopper PIR motion and daylight sensor with power pack, 120/277V

SPECIFICATIONS	
TYPE	PIR Motion + Daylight
MOUNTING HEIGHT	8' – 12'
LENS	Up to 300 sq/ft coverage
DETECTION ANGLE	360°
TEMPERATURE RANGE	0° to 50°C
RELATIVE HUMIDITY	0 to 90%, non-condensing
COMMISSIONING	App (iOS or Android)

SENSOR COVERAGE PATTERNS



SENSOR DETAIL



Dimensions: ø1-5/16"

DRIVER DETAILS

DIM



DALI



DMX



LD2

