

CATALOG #: \_\_\_\_\_

TYPE: \_\_\_\_\_

PROJECT: \_\_\_\_\_



## FEATURES

- Deliver scalable, data-driven smart buildings with PoE-enabled fixtures and controls
- Support human-centric design with adaptive, individualized lighting using tunable white light
- Specify in one inch increments to create a perfect fit
- High-performance up to 137 lm/W
- Flat, glowing edge, drop and regressed lenses give designers a variety of looks
- Widespread optic allows for increased luminaire spacing while enhancing ceiling uniformity
- Asymmetric optic directs light for targeted illumination
- Moveable mounting hardware easily slides along the length of the fixture providing variable mounting points for continuous rows
- Factory installed row alignment system creates straight rows with ease
- Corner configurations available, see Product Builder at [hew.com/product-builder](http://hew.com/product-builder)
- Made Right Here™ in the USA

## SPECIFICATIONS

- HOUSING** – Extruded aluminum with die-cast end plates.
- SHIELDING** – Extruded diffuse acrylic lens.
- FINISH** – Textured matte white polyester TGIC powder coat bonded to phosphate-free, multi-stage pretreated metal. All parts painted after fabrication to facilitate installation, increase efficiency, and inhibit corrosion.
- ELECTRICAL** – High-quality mid-power LED board. L70 > 6,000 hours per IES TM-21. Low-voltage DC fixture, to be fed by Class 2 power supply. Tunable White products use LEDs of multiple CCTs and may produce a perceptibly different shade of white from single-CCT products at the same CCT. All CCTs are within 3 MacAdam ellipses.
- MOUNTING** – Suspended. 1/16" diameter adjustable steel leveling aircraft cable and mounting hardware necessary for grid and hardpan ceiling applications provided.
- LISTINGS** –
  - cCSAus certified as luminaire suitable for dry or damp locations.
  - Build America, Buy America (BABA) and Buy American Act (BAA) compliant. Request certification at [hew.com/buy-american](http://hew.com/buy-american)
- WARRANTY** – 5-year limited warranty, see [hew.com/warranty](http://hew.com/warranty)

## SYSTEM REQUIREMENTS

- PoE-ready luminaires are connected to building power systems through network integration and require other components for complete PoE lighting system
- For additional PoE info, see [hew.com/poe](http://hew.com/poe)

## ORDERING EXAMPLE: MX2D - 12'00 - P8/835 - F - AC/D48 - OPTIONS - POE PR

**SERIES**  
MX2D Down  
MX2U Up

**ILLUMINATED LENGTH**<sup>[1]</sup>  
Lengths specified in feet and inches using 1" increments, 2' minimum.  
Example: 12'00 = 12'-0"

### Product Builder

Easily build shapes & simplify ordering with the Williams Linear Product Builder at [hew.com/product-builder](http://hew.com/product-builder)<sup>[2]</sup>



LUMENS <sup>[3]</sup>	CRI	CCT	SHIELDING	MOUNTING (EXAMPLE: AC/D48) <sup>[4]</sup>		
P8 800lm	8 80	27 2700K	F Flat	Prefix	Type	Length
	9 90 <sup>[5]</sup>	30 3000K	FW Flat with widespread, batwing optic	AC/	D 1" grid & hardpan	24 24"
		35 3500K	FA Flat with asymmetric optic		N 9/16" grid	48 48"
		40 4000K	G Glowing edge lens, 3/8" <sup>[6]</sup>		S Slot grid	96 96"
		50 5000K	D Drop lens, 1" <sup>[7]</sup>	MSF_	Microstem, 1/4" IPS, specify length in inches <sup>[9]</sup>	
		TW Tunable white (80 CRI, 3000K-5000K)	R Regressed lens, 1" <sup>[8]</sup>			

## OPTIONS

See page 3 for  
FINISH OPTIONS.

## CONTROL<sup>[10]</sup>

**POE PR** Power over Ethernet-ready

## NOTES

- Endcaps add 1/4" to overall specified length.
- See page 3 for CORNER DETAILS.
- Lumens per foot output based on F Shielding, 80 CRI, 3500K for single CCT and 4000K for TW. Actual performance may vary ± 5%. See page 2 for FIXTURE PERFORMANCE DATA.
- See page 3 for MOUNTING DETAILS.
- Not available with Tunable White.

- Not available with corner configurations.
- MX2D only. Not available with corner configurations.
- Not available with corner configurations. Increases fixture height. See page 2 for SHIELDING DETAILS.
- Power cord does not run through microstem.
- For additional PoE connection details, consult factory.



# MX2 PoE | tunable WHITE

## 2" Continuous – Suspended

### FIXTURE PERFORMANCE DATA

#### STATIC WHITE

DOWN (PER FOOT)			UP (PER FOOT)		
DELIVERED LUMENS	WATTAGE	EFFICACY (lm/W)	DELIVERED LUMENS	WATTAGE	EFFICACY (lm/W)
776	6.3	123	862	6.3	137

#### TUNABLE WHITE

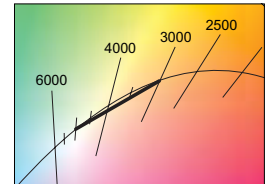
DOWN (PER FOOT)			UP (PER FOOT)		
DELIVERED LUMENS	WATTAGE	EFFICACY (lm/W)	DELIVERED LUMENS	WATTAGE	EFFICACY (lm/W)
778	6.3	123	865	6.3	137

- Photometrics tested in accordance with IESNA LM-79. Results based on 80 CRI, 3500K CCT static white, 4000K CCT tunable white, and 25°C ambient temperature. Actual performance may vary +/-5%.
- Use multiplier tables to calculate additional options.

#### MULTIPLIER TABLES

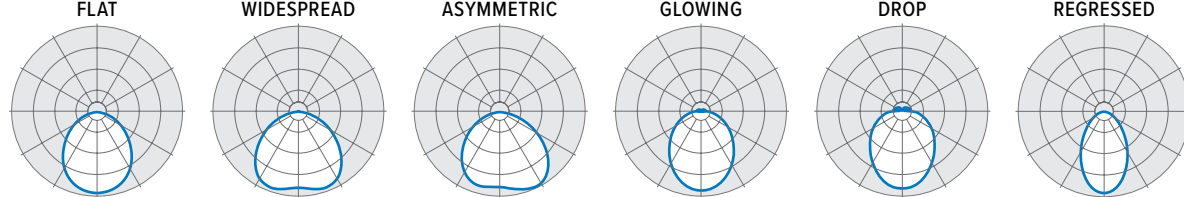
COLOR TEMPERATURE		
CCT	LUMENS	
	STANDARD	TUNABLE WHITE
80 CRI	2700K	0.97
	3000K	0.99
	3500K	1.00
	4000K	1.03
	5000K	1.06
90 CRI	2700K	0.80
	3000K	0.82
	3500K	0.83
	4000K	0.86
	5000K	0.89

SHIELDING	
LENS	CONVERSION FACTOR
F	1.00
FW	0.92
FA (MX2U)	0.96
FA (MX2D)	0.82
G	0.98
D	1.05
R	0.91

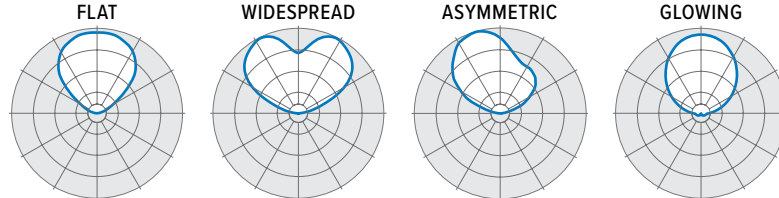


### PHOTOMETRY

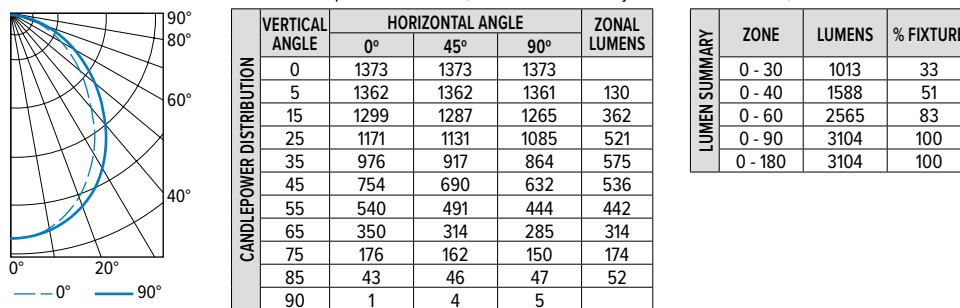
#### MX2D



#### MX2U

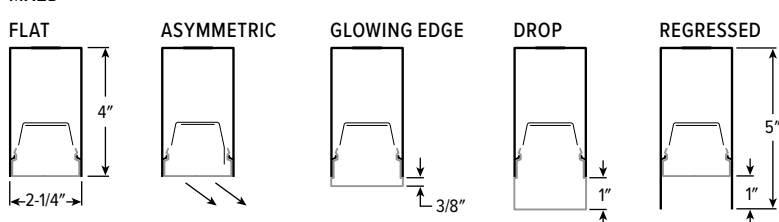


MX2D-4'00-P8/835-F Total Luminaire Output: 3104 lumens; 25.2 Watts | Efficacy: 123.2 lm/W | 80 CRI; 3500K CCT

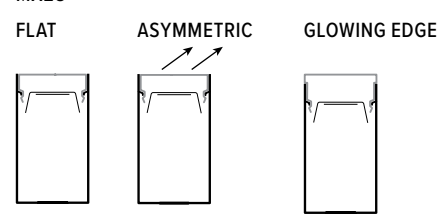


### SHIELDING DETAILS

#### MX2D



#### MX2U

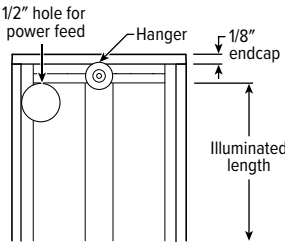


# MX2 PoE | tunable **WHITE** 2" Continuous – Suspended

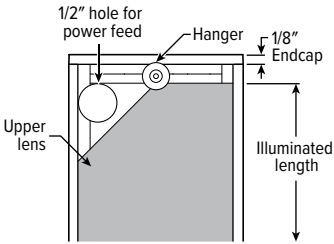
## FIXTURE DETAILS

Stand-alone fixtures up to 12' in length will require two suspension cables.

### MX2D BACK VIEW

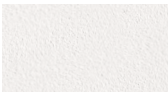


### MX2U BACK VIEW

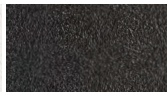


## FINISH OPTIONS

### WHITE



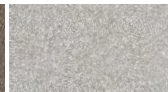
### BLACK



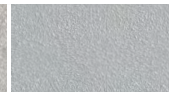
### BRONZE



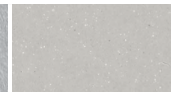
### NICKEL



### SILVER



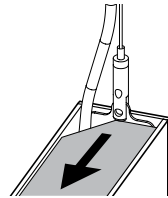
### ALUM



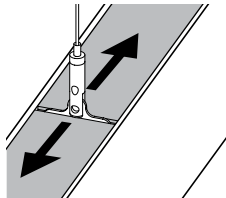
For custom color, please specify RAL code or a manufacturer code with description. All custom colors other than RAL require two sample swatches, minimum 1" square.

## MOUNTING DETAILS

### AIRCRAFT CABLE

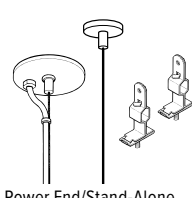


Field-adjustable standalone hanger.

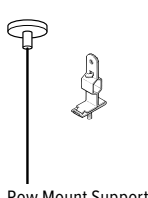


Joiner hanger slides to any position along extrusion. Lens may be cut to fit hanger.

### STANDARD HARDWARE



Power End/Stand-Alone

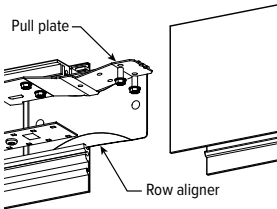


Row Mount Support

#### Notes:

- Fixtures are provided with adjustable length aircraft cables and mounting hardware, must specify.
- Electrical supply is brought into the feeder (or stand-alone) fixture, either as part of a row or as an individual mount unit. Power feed locations are at end of fixture.
- One 5" canopy included for each feeder fixture. One 2" canopy included for each additional fixture required in a row.

### ROW ALIGNMENT SYSTEM



Installer friendly row aligners ensure seamless joining between fixtures while factory installed pull plate locks extrusions in place without disassembly of fixture internals.

### AIRCRAFT CABLE



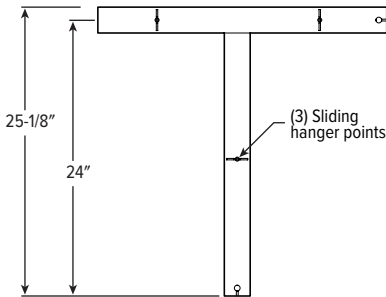
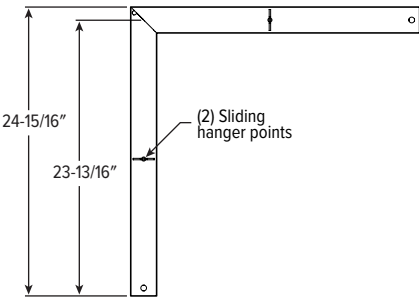
### MICROSTEM



Power cord does not run through microstem.

## CORNER DETAILS

### BACK VIEW



Note: Corner orientation determined in field. Feeder corner end cap shipped separately.

