

CATALOG #: _____

TYPE: _____

PROJECT: _____



FEATURES

- Deliver scalable, data-driven smart buildings with PoE-enabled fixtures and controls
- Support human-centric design with adaptive, individualized lighting using tunable white light
- Create elegant spaces with a seamless, continuous row of illumination
- Flat and proud lenses give designers a variety of looks
- Moveable mounting hardware easily slides along the length of the fixture providing variable mounting points
- Linear extrusion contains snap-in light rails for ease of installation and maintenance
- Versatile MX4 system includes recessed, surface, suspended and in-wall mounting, see hew.com
- Corner configurations available, see Product Builder at hew.com/product-builder
- Made Right Here® in the USA

SPECIFICATIONS

- HOUSING** – Extruded aluminum with die-cast end plates.
- SHIELDING** – Extruded, flat, diffuse acrylic lens.
- FINISH** – Textured matte white polyester TGIC powder coat bonded to phosphate-free, multi-stage pretreated metal. All parts painted after fabrication to facilitate installation, increase efficiency, and inhibit corrosion.
- ELECTRICAL** – High-quality mid-power LED board. L70 > 60,000 hours per IES TM-21. Low-voltage DC fixture, to be fed by Class 2 power supply. Tunable White products use LEDs of multiple CCTs and may produce a perceptibly different shade of white from single-CCT products at the same CCT. All CCTs are within 3 MacAdam ellipses.
- MOUNTING** – Suspended. 1/16" diameter adjustable steel leveling aircraft cable and mounting hardware necessary for grid and hardpan ceiling applications provided.
- LISTINGS** –
 - cCSAus certified as luminaire suitable for dry or damp locations.
 - Complies with the Buy American Act and other federal regulations. Request certification at hew.com/baa.
- WARRANTY** – 5-year limited warranty, see hew.com/warranty.

SYSTEM REQUIREMENTS

- PoE-ready luminaires are connected to building power systems through network integration and require other components for complete PoE lighting system
- For additional PoE info, see hew.com/poe

ORDERING EXAMPLE: MX4D - 12'00 - P7/835 - F - AC/D48 - OPTIONS - POE PR

SERIES

MX4D Down
MX4U Up

ILLUMINATED LENGTH ^[1]

Lengths specified in feet and inches using 4" increments, 2' minimum.
Example: 12'00 = 12'-0"

Product Builder

Easily build shapes & simplify ordering with the Williams Linear Product Builder at hew.com/product-builder ^[2]



LUMENS ^[3]	CRI	CCT	SHIELDING	MOUNTING (EXAMPLE: AC/D48) ^[4]		
P7 700lm	8 80	27 2700K	F Flat, diffuse acrylic	Prefix	Type	Length
	9 90	30 3000K	P Proud, diffuse acrylic with 5/16" drop ^[5]	AC/	D 1" grid & hardpan	24 24"
		35 3500K	FA Flat Asymmetric		N 9/16" grid	48 48"
		40 4000K			S Slot grid	96 96"
		50 5000K				
		TW Tunable white (80 CRI, 3000K–5000K)		MSF_	Microstem, 1/4" IPS, specify length in inches ^[6]	

OPTIONS ^[7]

V90 Vertical 90° corner, suspended ^[9]
ASY Asymmetric distribution ^[10]

CONTROL ^[8]

POE PR Power over Ethernet-ready

NOTES

- Endcaps add 7/8" to overall specified length.
- See page 3 for CORNER DETAILS.
- Lumens per foot output based on F Shielding, 80 CRI, 3500K for single CCT and 4000K for TW. Actual performance may vary ±5%. See page 2 for FIXTURE PERFORMANCE DATA.
- See page 3 for MOUNTING DETAILS.
- MX4D only. See page 3 for CROSS SECTIONS. Not available with corner configurations or transition options.

- MX4D only. Power cord does not run through microstem.
- See page 3 for FINISH OPTIONS. Custom colors available upon request.
- For additional PoE connection details, consult factory.
- Connects MX4D to vertically mounted MX4RW; F shielding only. See page 3 for FIXTURE DETAILS. Ships separately.
- Available with F shielding only. Creates uneven lens illumination. See page 3 for CROSS SECTIONS.



MX4 PoE | tunable WHITE

4" Continuous – Suspended

FIXTURE PERFORMANCE DATA

STANDARD - DOWNLIGHT (PER FOOT)

DELIVERED LUMENS	WATTAGE	EFFICACY (lm/W)
707	6	121

TUNABLE WHITE - DOWNLIGHT (PER FOOT)

DELIVERED LUMENS	WATTAGE	EFFICACY (lm/W)
703	5	128

STANDARD - UPLIGHT (PER FOOT)

DELIVERED LUMENS	WATTAGE	EFFICACY (lm/W)
728	6	124

TUNABLE WHITE - UPLIGHT (PER FOOT)

DELIVERED LUMENS	WATTAGE	EFFICACY (lm/W)
724	5	132

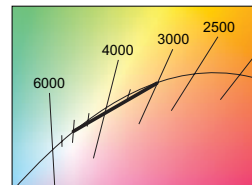
- Photometrics tested in accordance with IESNA LM-79. Results based on F shielding, 80 CRI/3500K CCT static white, 4000K CCT tunable white, average wattage for 120V through 277V input, and 25°C ambient temperature. Actual performance may vary +/-5%.
- To calculate lumen output in emergency mode, multiply the battery wattage by the efficacy.
- Use multiplier tables to calculate additional options.

MULTIPLIER TABLES

COLOR TEMPERATURE		
LUMENS		
CCT	STANDARD	TUNABLE WHITE
2700K	0.97	—
3000K	0.99	0.95
3500K	1.00	0.98
4000K	1.03	1.00
5000K	1.06	0.96

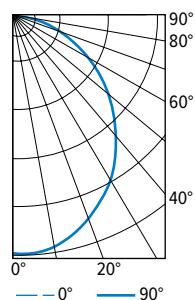
80 CRI		
CCT	STANDARD	TUNABLE WHITE
2700K	0.82	—
3000K	0.83	—
3500K	0.84	—
4000K	0.86	—
5000K	0.90	—

ASY OPTION	
WATTAGE	EFFICACY (lm/W)
1.03	0.97



PHOTOMETRY

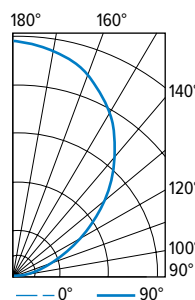
MX4D-4'00-P7/835-F Total Luminaire Output: 2828 lumens; 23.4 Watts | Efficacy: 121 lm/W | 80 CRI; 3500K CCT



VERTICAL ANGLE	HORIZONTAL ANGLE			ZONAL LUMENS
	0°	45°	90°	
0	1117	1117	1117	
5	1140	1108	1097	105
15	1102	1057	1039	299
25	986	955	932	439
35	854	813	798	512
45	693	662	637	512
55	518	494	463	440
65	338	318	304	316
75	159	153	151	165
85	25	31	28	39
90	0	0	0	

LUMEN SUMMARY	ZONE	LUMENS	% FIXTURE
	0 - 30	843	30
	0 - 40	1356	48
	0 - 60	2308	82
	0 - 90	2828	100
	0 - 180	2828	100

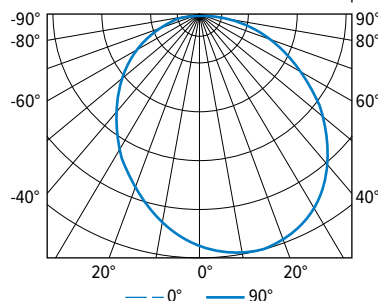
MX4U-4'00-P7/835-F Total Luminaire Output: 2912 lumens; 23.4 Watts | Efficacy: 124 lm/W | 80 CRI; 3500K CCT



VERTICAL ANGLE	HORIZONTAL ANGLE			ZONAL LUMENS
	0°	45°	90°	
90	0	0	0	
95	17	16	14	24
105	138	105	88	118
115	327	244	207	255
125	550	441	369	408
135	798	700	588	534
145	1017	951	861	583
155	1188	1125	1079	516
165	1281	1245	1214	351
175	1332	1300	1284	124
180	1318	1318	1318	

LUMEN SUMMARY	ZONE	LUMENS	% FIXTURE
	90 - 120	397	14
	90 - 130	805	28
	90 - 150	1922	66
	90 - 180	2912	100
	0 - 180	2912	100

MX4D-4'00-P7/835-F-ASY Total Luminaire Output: 2661 lumens; 24 Watts | Efficacy: 111 lm/W | 80 CRI; 3500K CCT

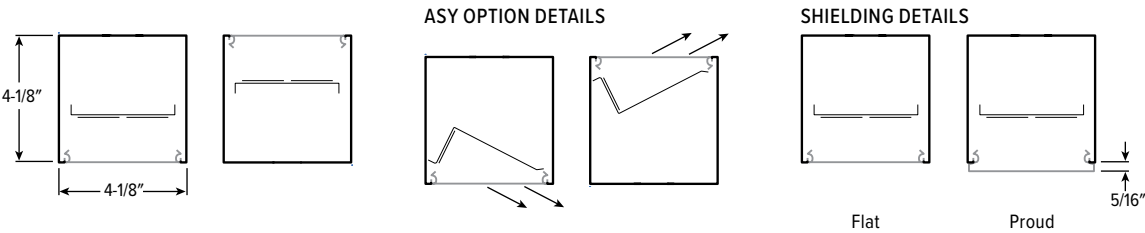


VERTICAL ANGLE	HORIZONTAL ANGLE					ZONAL LUMENS
	0°	45°	90°	135°	180°	
0	959	959	959	959	959	
5	956	978	989	978	956	91
15	916	986	1016	986	916	259
25	841	945	988	945	841	389
35	733	852	901	852	733	462
45	605	723	767	723	605	471
55	466	569	607	569	466	422
65	320	401	430	401	320	322
75	169	229	250	229	169	189
85	42	71	83	71	42	56
90	2	11	16	11	2	

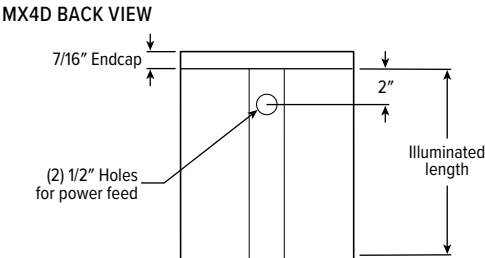
LUMEN SUMMARY	ZONE	LUMENS	% FIXTURE
	0 - 30	739	28
	0 - 40	1201	45
	0 - 60	2094	79
	0 - 90	2661	100
	0 - 180	2661	100



CROSS SECTIONS

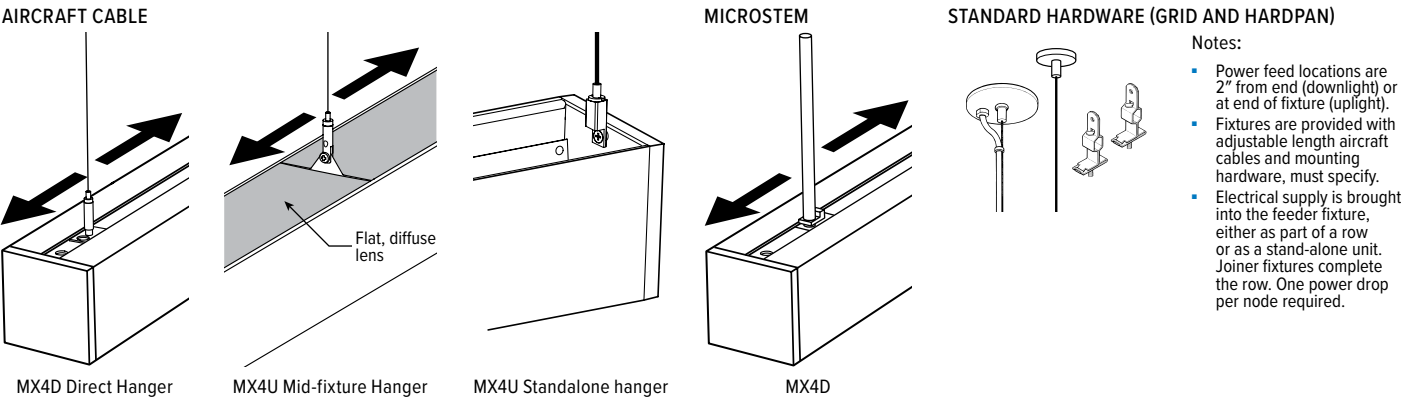


FIXTURE DETAILS

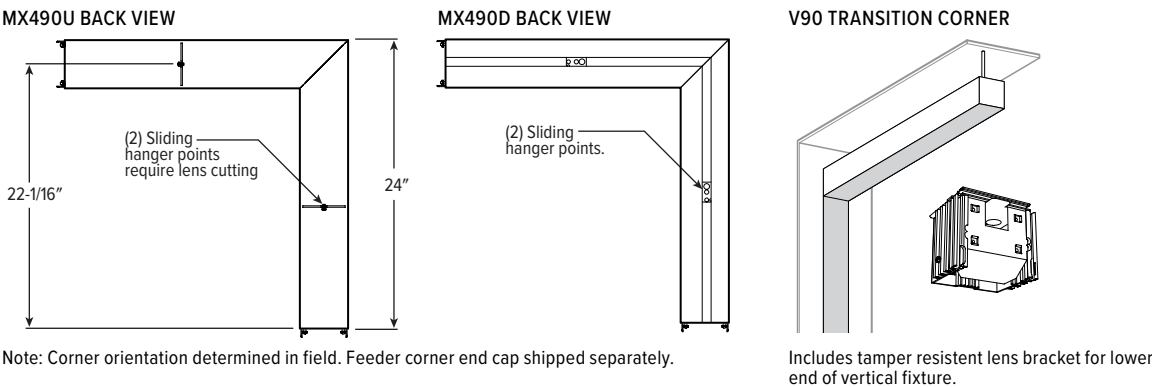


MOUNTING DETAILS

Aircraft cable row mount accessories can be repositioned along the length of the channel, providing flexible mounting locations to suit any application.



CORNER DETAILS



Note: Corner orientation determined in field. Feeder corner end cap shipped separately.

Includes tamper resistant lens bracket for lower end of vertical fixture.

FINISH OPTIONS

