

CATALOG #: _____

TYPE: _____

PROJECT: _____



FEATURES

- Room-side access
- Ultra slim 60mm for minimal plenum space
- Round or square diffuse ribbed acrylic lens options enhance the space
- Uniform ambient illumination
- Companion surface and retrofit kit preserve continuity, see hew.com
- HE option delivers superior efficacies up to 173 lm/W
- Rated for direct contact with insulation
- Heavy duty C.R.S. construction
- Anti-microbial finish option suppresses the spread of dangerous microorganisms, mold, and bacterial growth
- Wireless in-fixture control solutions available
- Made Right Here® in the USA

SPECIFICATIONS

- HOUSING/REFLECTOR** – Precision die-formed 22-gauge C.R.S.
- SHIELDING** – Diffuse ribbed acrylic.
- FINISH** – Highly reflective non-glare matte white polyester powder coat bonded to phosphate-free, multi-stage pretreated metal. All parts painted after fabrication to facilitate installation, increase efficiency, and inhibit corrosion.
- ELECTRICAL** – High quality mid-power LED boards. L70 > 72,000 hours per IES TM-21. L80 > 102,000 hours with HE option. 50/60 Hz constant current driver.
- MOUNTING** – Designed for NEMA Type “G” 1” grid ceiling standard.
- LISTINGS** –
 - cCSAus certified as luminaire suitable for dry or damp locations.
 - IC-rated for direct contact with insulation.
 - City of Chicago Environmental Air approved when specified with CP option.
 - Build America, Buy America (BABA) and Buy American Act (BAA) compliant. Request certification at hew.com/buy-american
- WARRANTY** – 5-year limited warranty, see hew.com/warranty

ORDERING EXAMPLE: PT - MET612 - L90/835 - RA - OPTIONS - CONTROL/DIM - UNV

ORDERING INFO

SERIES	WIDTH	LENGTH	LUMENS ^[1]	CRI	CCT	SHIELDING	
PT	MET6	600mm	6 600mm	MET66	8 80	27 2700K	RA Diffuse ribbed acrylic, round
			12 1200mm	L26 2,600lm	9 90	30 3000K	
				L43 4,300lm		35 3500K	SA Diffuse ribbed acrylic, square ^[2]
				L52 5,200lm		40 4000K	
				L61 6,100lm		50 5000K	
				MET612			
				L38 3,800lm			
				L49 4,900lm			
				L61 6,100lm			
				L90 9,000lm			
				L110 11,000lm			

OPTIONS

See page 3 for FLEXIBLE WHIP OPTIONS.

EM/10W	10-watt emergency battery
EM/12W	12-watt emergency battery ^[4]
EQCLIPS	Earthquake clips ^[5]
(L__)	Additional lower lumen packages available ^[6] Example: 8,000 lumens = PT-MET612-L90/835-(L80)
HE	High efficacy lumen package ^[7]
AMW	Anti-microbial white finish
CP	Chicago Plenum (CCEA)

CONTROL ^[3]

See page 5 for ADDITIONAL CONTROL OPTIONS.

–	None
AVI-LVFA	Avi-on wireless fixture control ^[8]
AVI-LVFA-CS2-PIR	Avi-on wireless fixture control with PIR motion and daylight sensor ^[9]
AWN	Lutron Athena wireless node integral fixture control, RF only ^[10]
AWNS	Lutron Athena wireless node integral fixture control, RF with daylight and occupancy sensing ^[11]

DRIVER

See page 5 for ADDITIONAL DRIVER OPTIONS.

DIM	Driver with 0-10V external dimming wires
DRV	Driver without external dimming wires
DA	Driver with 12V auxiliary power without external dimming wires ^[12]
DSR	Sensor-ready driver without external dimming wires (D4i DALI-2) ^[13]

VOLTAGE

120	120V
277	277V
UNV	120-277V
347	347V ^[14]

NOTES

- Lumen output based on RA Shielding, 80 CRI/3500K CCT. Actual performance may vary +/-5%, see page 2 for FIXTURE PERFORMANCE DATA. Additional lumen packages available, see OPTIONS.
- Increases lumen output by 3%.
- See page 3 for SENSOR & NODE PLACEMENT DETAILS. See page 4 for AVI-ON BLUETOOTH WIRELESS CONTROL DETAILS.
- Not available when CEC regulations are required.
- 4 per fixture.

- Specify in increments of 100 nominal lumens. Option must be specified with next higher lumen package.
- See page 2 for FIXTURE PERFORMANCE DATA.
- DA Driver only.
- DA Driver only.
- DA and DSR Drivers only.
- DA and DSR Drivers only.
- Avi-on and Lutron Athena Controls only.
- Lutron Vive and Athena Controls Only.
- Not available with EM batteries, DA, or DSR drivers.



PT-MET LED Shallow Plenum Troffer

FIXTURE PERFORMANCE DATA

	LED PACKAGE	DELIVERED LUMENS	STANDARD		HE OPTION	
			WATTAGE	EFFICACY (lm/W)	WATTAGE	EFFICACY (lm/W)
MET66	L26	2924	21.5	136	17.2	170
	L43	4194	32.2	130	27.2	154
	L52	5331	41.6	128	34.5	155
	L61	6073	50.2	121	41.1	148
MET612	L38	3782	28.5	133	23.1	164
	L49	5078	36.7	138	29.5	172
	L61	6181	45.5	136	35.8	173
	L90	9060	66.6	136	56.9	159
	L110	11086	83.7	132	69.4	160

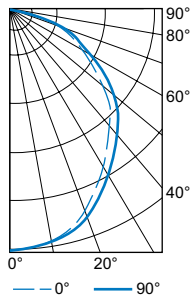
MULTIPLIER TABLE

	COLOR TEMPERATURE	
	CCT	CONVERSION FACTOR
80 CRI	2700K	0.97
	3000K	0.99
	3500K	1.00
	4000K	1.03
	5000K	1.06
90 CRI	2700K	0.82
	3000K	0.83
	3500K	0.84
	4000K	0.86
	5000K	0.90

- Photometrics tested in accordance with IESNA LM-79. Results based on RA Shielding, 80 CRI/3500K CCT, average wattage for 120V through 277V input, and 25°C ambient temperature. Actual performance may vary +/-5%.
- To calculate lumen output in emergency mode, multiply the battery wattage by the efficacy.
- Use multiplier table to calculate additional options.

PHOTOMETRY

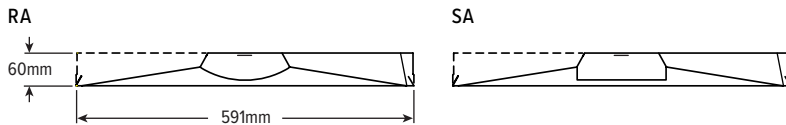
PT-MET612-L110/835-RA-DIM-UNV Total Luminaire Output: 11086 lumens; 83.7 Watts | Efficacy: 132 lm/W | 82.7 CRI; 3494K CCT



VERTICAL ANGLE	HORIZONTAL ANGLE			ZONAL LUMENS
	0°	45°	90°	
0	4241	4241	4241	
5	4177	4171	4149	399
15	4054	4067	4084	1139
25	3572	3620	3664	1649
35	2887	2979	3055	1859
45	2347	2477	2603	1896
55	1707	1868	2018	1675
65	1105	1310	1488	1293
75	524	805	996	846
85	106	355	407	332
90	0	0	0	

LUMEN SUMMARY	ZONE	LUMENS	% FIXTURE
	0 - 30	3186	29
0 - 40	5045	46	
0 - 60	8616	78	
0 - 90	11086	100	
0 - 180	11086	100	

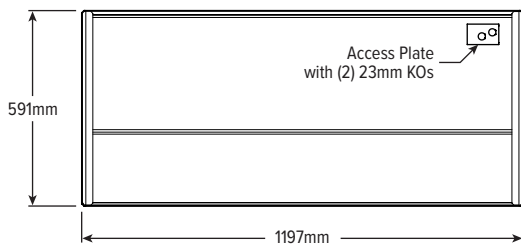
CROSS SECTIONS



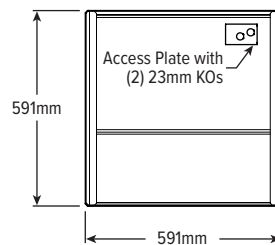
FIXTURE DETAILS

BACKVIEW

MET612



MET66



PT-MET LED Shallow Plenum Troffer

FLEXIBLE WHIP OPTIONS

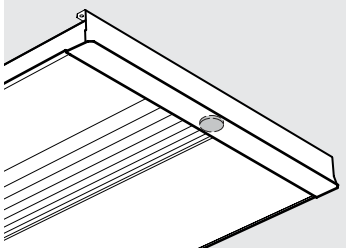
All Williams recessed troffers are available with a flexible metallic wiring harness, factory-attached and hard-wired to the luminaire.

Straight connectors are a snap-in type. Consult factory for wiring harness utilizing connectors secured by lock nuts, optional flex size, lengths, and other wire sizes or circuitry. Three-wire flex utilizes black, white, and green wire. Four-wire flex utilizes black, white, red, and green wire. Adding an emergency option requires an additional wire.

Williams fixtures are UL listed to provide factory-installation of several manufacturers' modular wiring devices, consult factory for availability and ordering information.

DESIGNATION	DESCRIPTION	DRIVER
F338	6' of 3/8" flex, (3) No. 18 AWG wires with (2) straight connectors	DRV, LTE LINE
F348	6' of 3/8" flex, (4) No. 18 AWG wires with (2) straight connectors	DRV + EM, SD40
F334	6' of 3/8" flex, (3) No. 14 AWG wires with (2) straight connectors	DRV, LTE LINE
F344	6' of 3/8" flex, (4) No. 14 AWG wires with (2) straight connectors	SD40
F358	6' of 3/8" flex, (5) No. 18 AWG wires with (2) straight connectors	DIM, DALI
F368Y	6' of 3/8" flex, (6) No. 18 AWG wires with (2) straight connectors	DIM, DIM + EM, DALI

SENSOR & NODE PLACEMENT DETAILS



PT-MET LED Shallow Plenum Troffer

AVI-ON BLUETOOTH WIRELESS CONTROL DETAILS

FEATURES

Simple

- Gateway-free distributed control
- Contractor friendly installation
- Occupancy/vacancy/daylight sensing

Scalable

- Virtually unlimited network size
- Spans small offices to large warehouses
- Flexible control strategies

Secure

- Optional cloud connectivity
- UL IoT platinum security rating
- DLC 5.0 compliant

COMMISSIONING & INSTALLATION TOOLS

Avi-on mobile apps provide intuitive, quick installation and commissioning. Pro tools are available to qualified installers. Live commissioning training and on-site or remote support by Avi-on must be ordered separately through Avi-on.



Commissioning Mobile App

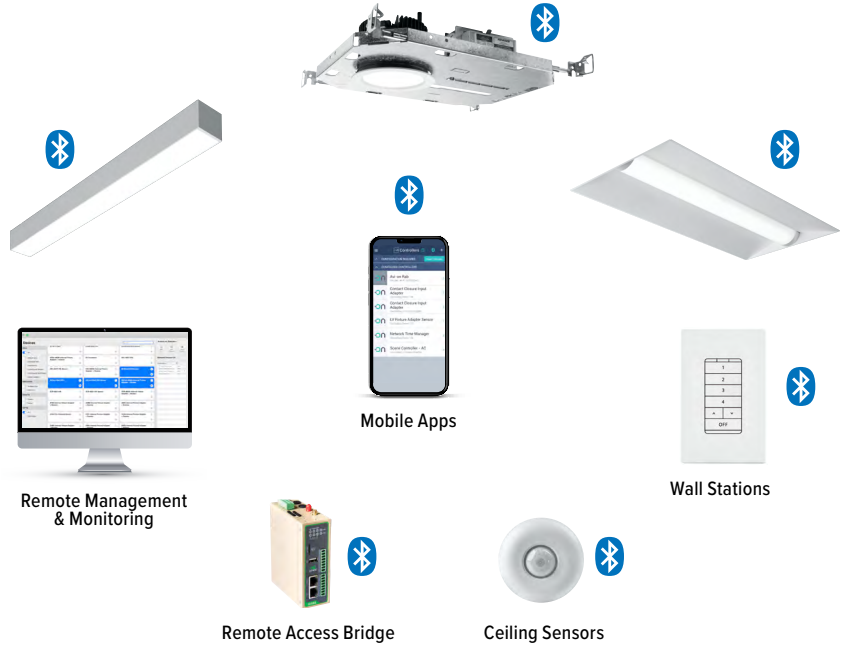


Zone Scanner Web App



Commissioning Pro App

SYSTEM COMPONENTS



The Bluetooth® word mark and logos are registered trademarks owned by Bluetooth SIG, Inc. and any use of such marks by Avi-on is under license. Other trademarks and trade names are those of their respective owners.

ACCESSORIES

WALL STATIONS

- AVI-B-2401AC-1** Scene controller - buttons numbered 1-4 and up/down/off, 120-277VAC
- AVI-B-2402BAT-1** Scene controller - buttons numbered 1-4 and up/down/off, battery powered
- AVI-B-2401AC-2** Dimmer with presets - buttons with percentages and up/down/off, 120-277VAC
- AVI-B-2402BAT-2** Dimmer with presets - buttons with percentages and up/down/off, battery powered
- AVI-B-2401AC-3** Two button control on/off or hold to dim up/down, 120-277VAC
- AVI-B-2402BAT-3** Two button control on/off or hold to dim up/down, battery powered

NETWORK

- AVI-RAB-LTE** Remote access bridge
- AVI-NTM** Network time manager with battery backup

CEILING MOUNT SENSORS

- AVI-KIT-SEN-DUCM** PIR motion and ultrasonic sensor kit
- AVI-KIT-SEN-ICM** PIR motion and photocell sensor kit

For load controllers and additional accessory info, see hew.com/avi-on

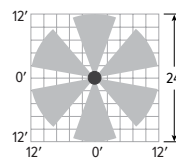
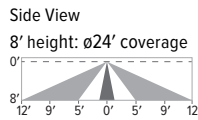
AVI-LVFA-CS2-PIR Avi-on wireless fixture control with PIR motion and daylight sensor. DA Driver only.

SPECIFICATIONS

- TYPE** PIR Motion + Daylight
- MOUNTING HEIGHT** 8' - 10'
- DETECTION ANGLE** 360°
- TEMPERATURE RANGE** -30° to 50°C
- RELATIVE HUMIDITY** 10 to 80% non-condensing
- IP RATING** IP20
- MANUFACTURER** Avi-On



SENSOR COVERAGE PATTERNS



SENSOR DETAIL



Dimensions: 13/16" x 2-1/4"

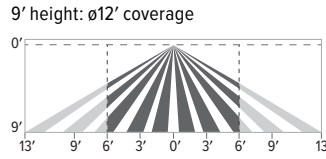


ADDITIONAL CONTROL OPTIONS

AWNS Lutron Athena wireless node integral fixture control, RF with daylight and occupancy sensing. DA and DSR Drivers only.

SPECIFICATIONS	
TYPE	Radio Frequency
MOUNTING HEIGHT	8' – 12'
DETECTION ANGLE	360°
TEMPERATURE RANGE	0° to 55°C
RELATIVE HUMIDITY	0 to 90%, non-condensing
COMMISSIONING	Clear Connect gateway – Type X with app (iOS or Android)
MANUFACTURER	Lutron

SENSOR COVERAGE PATTERNS



Motion Sensor Coverage

CEILING HEIGHT	COVERAGE AREA (SQ FT)
8'	114
9'	144
10'	178
12'	256

SENSOR DETAIL



Dimensions: ø1-1/8"

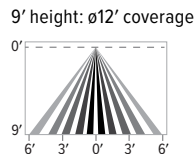
ATHENA CONTROL OPTIONS

CATALOG NUMBER	DESCRIPTION
AWNDR	Lutron Athena wireless node integral fixture control, RF only, for use with D4i DALI-2 or driver with 12V auxiliary power.
AWNS	Lutron Athena wireless node integral fixture control, RF with daylight and occupancy sensing, for use with D4i DALI-2 or driver with 12V auxiliary power.
AWNDR-BL	Lutron Athena wireless node integral fixture control, RF only, for use with D4i DALI-2 or driver with 12V auxiliary power, black finish.
AWNS-BL	Lutron Athena wireless node integral fixture control, RF with daylight and occupancy sensing, for use with D4i DALI-2 or driver with 12V auxiliary power, black finish.

VDO Lutron Vive integral fixture control, RF with daylight and occupancy sensor (DFCSJ-OEM-OCC). DSR or LDE Drivers only. LDE drivers require driver interface

SPECIFICATIONS	
TYPE	PIR Motion + Daylight
MOUNTING HEIGHT	8' – 12'
DETECTION ANGLE	360°
TEMPERATURE RANGE	0° to 55°C
RELATIVE HUMIDITY	0 to 90%, non-condensing
COMMISSIONING	App (iOS or Android)
MANUFACTURER	Lutron

SENSOR COVERAGE PATTERNS



Motion Sensor Coverage

CEILING HEIGHT	COVERAGE AREA (SQ FT)
8'	114
9'	144
10'	178
12'	256

SENSOR DETAIL



Dimensions: 2-11/16" x 1"

VIVE CONTROL OPTIONS

CATALOG NUMBER	DESCRIPTION
VRF	Lutron Vive integral fixture control, RF only (DFCSJ-OEM-RF), for use with sensor-ready driver
VDO	Lutron Vive integral fixture control, RF with daylight and occupancy sensor (DFCSJ-OEM-OCC), for use with sensor-ready driver
VRF/DBI	Lutron Vive integral fixture control, RF only (DFCSJ-OEM-RF) and digital link interface, for use with Lutron Hi-lume 1% EcoSystem dimming LED driver
VDO/DBI	Lutron Vive integral fixture control, RF with daylight and occupancy sensor (DFCSJ-OEM-OCC) and digital link interface, for use with Lutron Hi-lume 1% EcoSystem dimming LED driver

ADDITIONAL DRIVER OPTIONS

Note: Lumen restrictions apply, consult product builder at hew.com/product-builder

CATALOG NUMBER	DESCRIPTION
DRV	Driver without external dimming wires prewired for non-dimming applications
DIM	Driver with external dimming wires prewired for 0-10V low voltage applications
DIM1	1% driver with external dimming wires prewired for 0-10V low voltage applications
DIM LINE	Line voltage dimming driver (TRIAC and ELV compatible, 120V only)
DIM TRC	Line voltage dimming driver (TRIAC compatible, 120V only)
DA	Driver with 12V auxiliary power, without external dimming wires
DSR	Sensor-ready driver without external dimming wires (D4i DALI-2)
SD40	40% step-dimming driver
SD50	50% step-dimming driver
DALI	DALI dimming driver
LDE1	Lutron Hi-lume 1% EcoSystem dimming driver

