

CATALOG #: _____

TYPE: _____

PROJECT: _____



FEATURES

- Support human-centric design with adaptive, individualized lighting using tunable white light
- Wide asymmetric distribution produces ample general illumination in high-ceiling environments
- Sleek, linear design incorporates clean lines, slim styling, and a continuous row of light
- Quick and easy installation with wall mounted bracket providing multiple pre-drilled screw locations and a quick hang feature for the fixture
- Solutions for both grid and drywall ceilings
- Adjustable extensions allow for a perfect fit to meet adjacent walls
- Diffuse acrylic lens shields LEDs from view
- Wireless in-fixture control solutions available
- Made Right Here® in the USA

SPECIFICATIONS

- **HOUSING** – Formed sheet metal and aluminum.
- **FINISH** – Textured matte white polyester TGIC powder coat bonded to phosphate-free, multistage pretreated metal. All parts painted after fabrication to facilitate installation, increase efficiency, and inhibit corrosion.
- **ELECTRICAL** – High-quality mid-power LED board. L70 > 50,000 hours per IES TM-21. Tunable White products use LEDs of multiple CCTs and may produce a perceptibly different shade of white from single-CCT products at the same CCT. All CCTs are within 3 MacAdam ellipses.
- **MOUNTING** – Wall mount rail, predrilled with wall screw locations, with quick hang feature.
- **LISTINGS** –
 - cCSAus certified as luminaire suitable for dry or damp locations.
 - Complies with the Buy American Act and other federal regulations. Request certification at hew.com/baa.
- **WARRANTY** – 5-year limited warranty, see hew.com/warranty.

ORDERING EXAMPLE: PX G - 42 - 14'08 - L10/8TW - S - LCAP/RCAP - OPTIONS - CONTROL/DALI - UNV

ORDERING INFO

SERIES	CEILING TYPE	WIDTH	HEIGHT	LENGTH
PX	G Grid	4 4"	2 2"	Lengths specified in feet and inches using 1" increments, 2' minimum. Example: 14'08 = 14'-8"
	F Drywall	6 6"		

PRODUCT BUILDER

Simplify ordering & layout design with the Williams Linear Product Builder at hew.com/product-builder

LUMEN PACKAGE ^[1]	CRI	CCT	DISTRIBUTION	LEFT END TYPE	RIGHT END TYPE
L4 400lm	8 80	TW Tunable white (3000K-5000K)	S Slot	LWALL Wall	RWALL Wall
L7 700lm	9 90			LCAP Cap	RCAP Cap
L10 1000lm		TW2 Tunable white (2700K-6500K)			

OPTIONS

- EM/10WLP** Low-profile 10-watt emergency battery ^[2]
- EM/10WRM (L__)** Remote mount 10-watt emergency battery ^[3]
- Additional lower lumen packages available ^[4]
Example: 800 lumens = PXG-42-14'08-L10/8TW-(L8)

CONTROL

- None
- AWN** Lutron Athena wireless node integral fixturecontrol, RF only ^[5]

DRIVER

- See page 2 for **DRIVER DETAILS**.
- DALI** Driver prewired for DALI applications
- DIM** (1) 0-10V signal to control dimming (1) 0-10V signal to control CCT
- DMX** Driver prewired for DMX applications
- DSR** Sensor-ready driver without external dimming wires (D4i DALI-2). ^[6]
- LD2** Lutron DALI-2 digital driver, 1%

VOLTAGE

- 120 120V
- 277 277V
- UNV 120-277V

NOTES

- ¹ Nominal lumens per foot output based on 4000 CCT. Actual lumens per foot may vary +/-5%. See page 2 for FIXTURE PERFORMANCE DATA. Additional lumen packages available, see Options.
- ² Minimum 4' fixture; 120V-277V only.
- ³ Required for fixtures below 4'; 120V-277V only.
- ⁴ (L5) lumen package minimum. Specify in increments of 100 nominal lumens. Option must be specified with next higher lumen package.
- ⁵ DSR and LD2 Drivers only.
- ⁶ Lutron Athena Controls only.



FIXTURE PERFORMANCE DATA

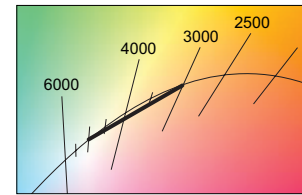
	WIDTH & HEIGHT	DELIVERED LUMENS	WATTAGE PER FOOT	EFFICACY (lm/W)
L4	42	390	3.6	108
	62	395	3.5	113
L7	42	682	6.5	105
	62	691	6.4	108
L10	42	974	9.8	99
	62	987	9.5	104

- Photometrics tested in accordance with IESNA LM-79. Results based on 80 CRI/4000K CCT, average wattage for 120V through 277V input, and 25°C ambient temperature. Actual performance may vary +/-5%.
- To calculate lumen output in emergency mode, multiply the battery wattage by the efficacy.
- Use multiplier table to calculate additional options.

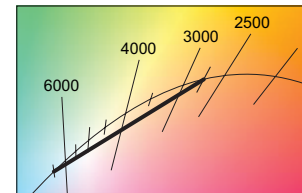
MULTIPLIER TABLE

	CCT	COLOR TEMPERATURE			
		TW		TW2	
		LUMENS	WATTAGE	LUMENS	WATTAGE
80 CRI	2700K	-	-	0.93	1.02
	3000K	0.95	1.04	0.95	1.01
	3500K	0.98	1.02	0.98	1.00
	4000K	1.00	1.00	1.00	1.00
	5000K	0.96	1.04	1.02	1.00
6500K	-	-	1.01	1.04	
90 CRI	2700K	-	-	0.93	1.02
	3000K	0.91	1.03	0.95	1.01
	3500K	0.96	1.01	0.98	1.00
	4000K	1.00	1.00	1.00	1.00
	5000K	1.03	1.03	1.03	1.00
	6500K	-	-	1.02	1.04

TW

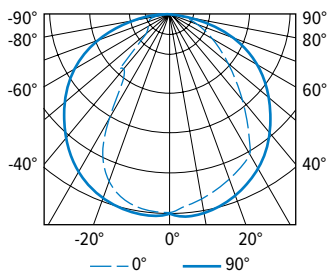


TW2



PHOTOMETRY

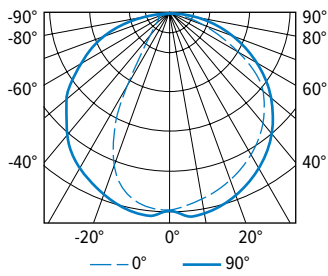
PXF-42-03'08-L7/8TW-S-LCAP/RCAP-DIM-UNV Total Luminaire Output: 2503 lumens; 23.9 Watts | Efficacy: 104.7 lm/W | 80 CRI; 4000K CCT



VERTICAL ANGLE	HORIZONTAL ANGLE					ZONAL LUMENS
	0°	45°	90°	135°	180°	
0	1115	1115	1115	1115	1115	1115
5	1085	1106	1140	1127	1108	106
15	1030	1059	1114	1087	1055	302
25	958	981	1049	990	863	448
35	790	878	950	749	408	494
45	539	690	818	352	175	441
55	352	438	664	146	134	347
65	202	248	474	103	121	228
75	75	99	259	73	72	115
85	0	6	24	17	16	22
90	0	0	0	1	0	0

LUMEN SUMMARY	ZONE	LUMENS	% FIXTURE
0 - 30	856	34	
0 - 40	1350	54	
0 - 60	2138	85	
0 - 90	2503	100	
0 - 180	2503	100	

PXF-62-03'08-L7/8TW-S-LCAP/RCAP-DIM-UNV Total Luminaire Output: 2536 lumens; 23.5 Watts | Efficacy: 107.9 lm/W | 80 CRI; 4000K CCT

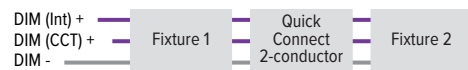


VERTICAL ANGLE	HORIZONTAL ANGLE					ZONAL LUMENS
	0°	45°	90°	135°	180°	
0	1120	1120	1120	1120	1120	1120
5	1092	1107	1154	1130	1109	106
15	1039	1058	1124	1080	1027	301
25	967	980	1058	952	735	439
35	881	875	961	666	226	477
45	755	757	826	219	108	444
55	595	600	667	92	79	374
65	312	389	469	61	73	250
75	107	144	242	50	54	125
85	0	3	17	14	13	21
90	0	0	0	0	0	0

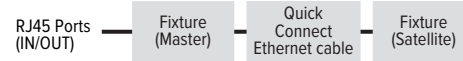
LUMEN SUMMARY	ZONE	LUMENS	% FIXTURE
0 - 30	846	33	
0 - 40	1323	52	
0 - 60	2141	84	
0 - 90	2536	100	
0 - 180	2536	100	

DRIVER DETAILS

DIM



DMX



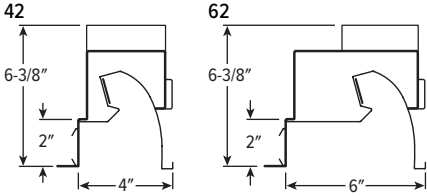
DALI



LD2



CROSS SECTIONS



CEILING TYPE DETAILS

