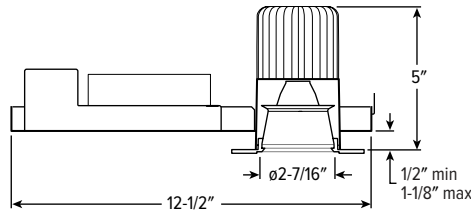
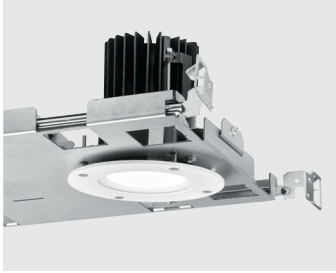


V2DR LED

2" Vandal-Resistant Downlight – Round



CATALOG #: _____

TYPE: _____

PROJECT: _____



ORDERING EXAMPLE: **V2DR - L18/835 - OPTIONS - CONTROL/DIM - UNV - LW - OF - WH - TRIM OPTIONS - N - F1**

HOUSING

SERIES	LUMENS ⁽¹⁾	CRI	CCT	OPTIONS ⁽²⁾	CONTROL	DRIVER	VOLTAGE
V2DR	L5 500lm	8 80	27 2700K	EM/5W 5-watt emergency battery ⁽³⁾	See page 4 for ADDITIONAL CONTROL/DRIVER OPTIONS.	See page 4 for ADDITIONAL CONTROL/DRIVER OPTIONS.	UNV 120-277V
	L8 800lm	9 90	30 3000K	EM/7W 7-watt emergency battery ⁽⁴⁾			347 347V ⁽¹⁰⁾
	L14 1,400lm		35 3500K	EM/10W 10-watt emergency battery ⁽⁵⁾	- None	DIM Dimming driver, 0-10V	
	L18 1,800lm		40 4000K	ATH Airtight construction	AVI-LVFA Avi-on wireless fixture control ⁽⁷⁾	DIM1 1% Dimming driver, 0-10V	
			50 5000K	F Fuse	AWNRLutron Athena wireless node integral fixture control, RF only ⁽⁸⁾	DA Driver with 12V auxiliary power, without external dimming wires ⁽⁹⁾	
				SDT Stepdown transformer ⁽⁶⁾			

TRIM

TRIM TYPE	DISTRIBUTION ⁽¹¹⁾	FLANGE TYPE	REFLECTOR FINISH	TRIM OPTIONS
L Flush lens	W Wide	OF 1/2" standard flange with 7/8" vandal ring ⁽¹²⁾	WH White texture powder coat	AM Anti-microbial ⁽¹³⁾
R Regressed lens	50° Flush		CS Clear semi-specular powder coat	WET/CC Wet location, covered ceiling listed
	55° Regressed		BL Black texture powder coat	

MOUNTING

MOUNTING TYPE	MOUNTING HARDWARE
N Open pan for new construction ⁽¹⁴⁾	See page 3 for ADDITIONAL MOUNTING HARDWARE OPTIONS.
	F1 Integral 2-position fixed pan bracket, universal bar hanger included
	BA1 Adjustable butterfly pan bracket, bar hanger not included
	BA2 Adjustable butterfly pan bracket, heavy-duty universal bar hanger included

NOTES

- ¹ Lumen output based on L Trim Type and WH Reflector Finish, 80 CRI/3500K CCT. Actual performance may vary +/-5%, see page 2 for FIXTURE PERFORMANCE DATA.
- ² EM batteries: specify CEC in the option code when California Energy Commission regulations are required.
- ³ Top access required.
- ⁴ L8 minimum lumen package and top access required.

- ⁵ L14 minimum lumen package and top access required.
- ⁶ May be required for 347V, see product builder at hew.com/product-builder
- ⁷ DA Driver only. See page 4 for AVI-ON BLUETOOTH WIRELESS CONTROL DETAILS.
- ⁸ DA Driver only.
- ⁹ Avi-on and Lutron Athena Controls only.

- ¹⁰ Not available with EM batteries, DA, or DMX drivers.
- ¹¹ Beam angle based on L Trim Type and WH Reflector Finish.
- ¹² Vandal ring finish matches specified reflector finish.
- ¹³ WH and BL Reflector Finishes only.
- ¹⁴ Mounting hardware required, ordered separately, see MOUNTING HARDWARE



V2DR LED 2" Vandal-Resistant Downlight – Round

FEATURES

- Ideal for schools, behavioral health facilities, correctional institutions and other vandal-prone areas
- Anti-ligature design with tamper-resistant fasteners
- Anti-microbial trim option suppresses the spread of dangerous micro-organisms, mold, and bacterial growth
- 2" aperture is unobtrusive in small scale spaces
- Easily adjust mounting arms below ceiling to adapt to a range of ceiling thicknesses
- Contemporary design provides glare-free illumination for a soft ceiling appearance
- Low UGR meets LEED and WELL requirements
- Wireless in-fixture control solutions available
- Made Right Here® in the USA

SPECIFICATIONS

- **HOUSING** – Die-cast aluminum trim housing with forged aluminum heat sink. Galvanized steel splice compartment with driver mounting plate/enclosure. Swing-out mounting arms field adjust for ceiling thickness from 1/2" – 1-1/8" max.
- **LENSED TRIM** – Die-cast aluminum frame with 1/8" micro-prismatic, polycarbonate lens. Aluminum vandal ring is secured with four stainless steel, tamper-resistant screws, (1) tamper-resistant tool provided.
- **ELECTRICAL** – High-performance Class 2 C.O.B. LED array. Modular quick-connect plug for easy field-connection of LED light assembly to driver. Reported L70 > 55,000 hours. Reported L90=49,000 hours. Estimated L70=179,000 hours.
- **MOUNTING** – Recessed. 20 ga. galvanized steel mounting pan for new construction. Top access required when specified with EM battery or controls other than DIM, DIM1, DIM LINE.

LISTINGS –

- cCSAus conforms to UL STD 1598; Certified to CAN/CSA STD C22.2 No. 250.0 for dry and damp locations. LED light assembly conforms to UL 2108 for remote installation.
- Suitable for wet location under covered ceiling when specified with WET/CC option.
- Complies with ASTM-E283 when specified with ATH option.
- RoHS compliant.
- Complies with the Buy American Act and other federal regulations. Request certification at hew.com/buy-american
- **WARRANTY** – 5-year limited warranty, see hew.com/warranty

FIXTURE PERFORMANCE DATA

	WATTAGE	FLUSH LENS TRIM TYPE		REGRESSED LENS TRIM TYPE	
		DELIVERED LUMENS	EFFICACY (lm/W)	DELIVERED LUMENS	EFFICACY (lm/W)
L5	6.7	505	75	490	73
L8	10.7	822	77	798	75
L14	17.3	1409	81	1368	79
L18	23.9	1805	76	1752	73

- Photometrics tested in accordance with IESNA LM-79. Results based on L Trim Type, WH Reflector Finish, 80 CRI/3500K CCT, wattage for 120V input, and 25°C ambient temperature. Actual performance may vary +/-5%.
- To calculate lumen output in emergency mode, multiply the battery wattage by the efficacy.
- Use multiplier tables to calculate additional options.

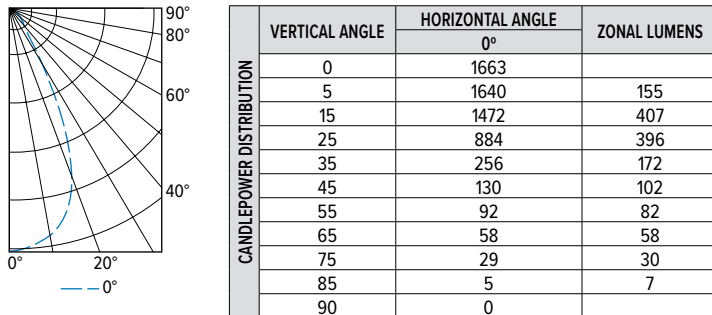
MULTIPLIER TABLES

	COLOR TEMPERATURE	
	CCT	CONVERSION FACTOR
80 CRI	2700K	0.92
	3000K	0.98
	3500K	1.00
	4000K	1.01
	5000K	1.02
90 CRI	2700K	0.76
	3000K	0.79
	3500K	0.82
	4000K	0.84
	5000K	0.88

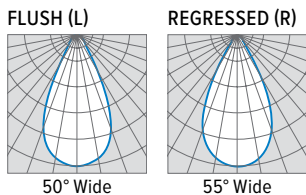
	REFLECTOR FINISH	
	CATALOG NUMBER	CONVERSION FACTOR
R TRIM	WH	1.00
	CS	0.98
	BL	0.79

PHOTOMETRY

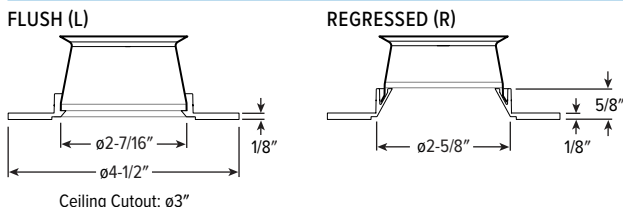
V2DR-L14/835-DIM-UNV-LW-OF-WH Total Luminaire Output: 1409 lumens; 17.3 Watts | Efficacy: 81 lm/W | 80 CRI; 3500K CCT



LUMEN SUMMARY	ZONE	LUMENS	% FIXTURE
	0 - 40	1130	80
	0 - 60	1314	93
	0 - 90	1409	100
	0-180	1409	100



TRIM TYPE DETAILS



V2DR

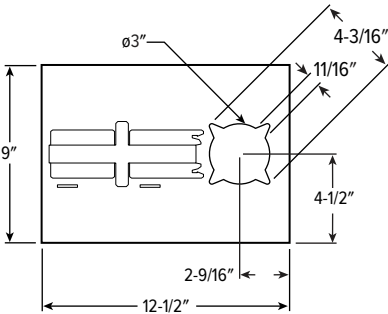
LED

2" Vandal-Resistant Downlight – Round

REFLECTOR FINISH DETAILS

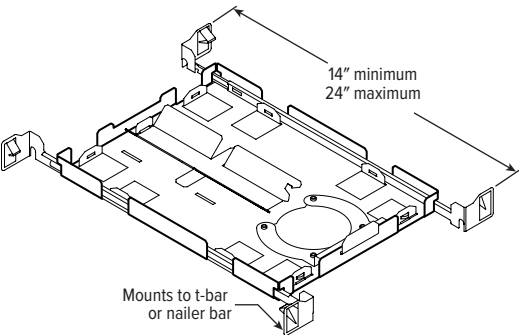
CS	WH	BL
Clear semi-specular	White	Black

MOUNTING TYPE DETAILS

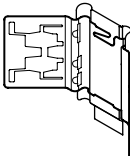


ADDITIONAL MOUNTING HARDWARE OPTIONS

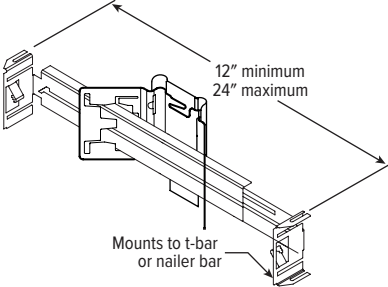
F1 Integral 2-position fixed pan bracket, universal bar hanger included



BA1 Adjustable butterfly pan bracket, bar hanger not included



BA2 Adjustable butterfly pan bracket, heavy-duty universal bar hanger included



V2DR^{LED} 2" Vandal-Resistant Downlight – Round

AVI-ON BLUETOOTH WIRELESS CONTROL DETAILS

FEATURES

Simple

- Gateway-free distributed control
- Contractor friendly installation
- Occupancy/vacancy/daylight sensing

Scalable

- Virtually unlimited network size
- Spans small offices to large warehouses
- Flexible control strategies

Secure

- Optional cloud connectivity
- UL IoT platinum security rating
- DLC 5.0 compliant

COMMISSIONING & INSTALLATION TOOLS

Avi-on mobile apps provide intuitive, quick installation and commissioning. Pro tools are available to qualified installers. Live commissioning training and on-site or remote support by Avi-on must be ordered separately through Avi-on.



Commissioning Mobile App

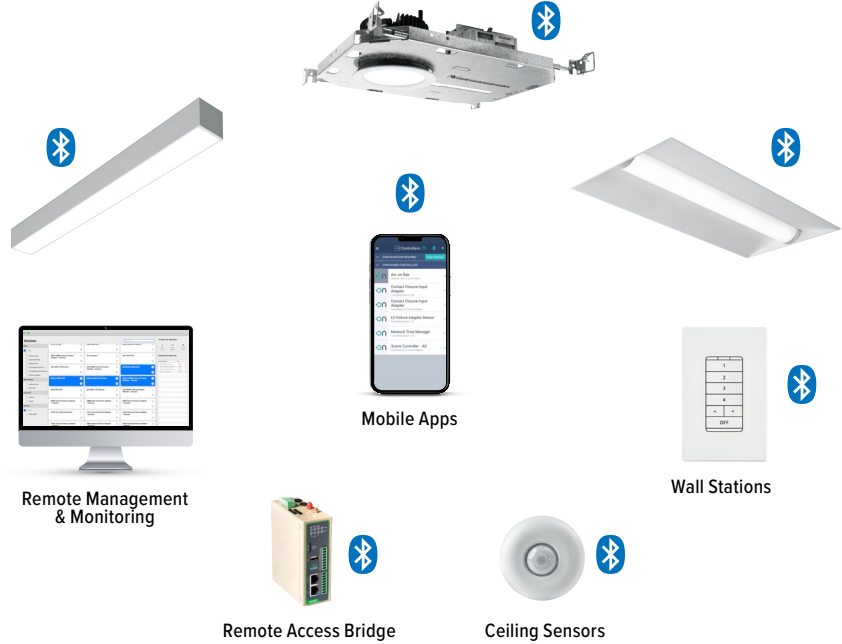


Zone Scanner Web App



Commissioning Pro App

SYSTEM COMPONENTS



The Bluetooth® word mark and logos are registered trademarks owned by Bluetooth SIG, Inc. and any use of such marks by Avi-on is under license. Other trademarks and trade names are those of their respective owners.

ACCESSORIES

WALL STATIONS	
AVI-B-2401AC-1	Scene controller - buttons numbered 1-4 and up/down/off, 120-277VAC
AVI-B-2402BAT-1	Scene controller - buttons numbered 1-4 and up/down/off, battery powered
AVI-B-2401AC-2	Dimmer with presets - buttons with percentages and up/down/off, 120-277VAC
AVI-B-2402BAT-2	Dimmer with presets - buttons with percentages and up/down/off, battery powered
AVI-B-2401AC-3	Two button control on/off or hold to dim up/down, 120-277VAC
AVI-B-2402BAT-3	Two button control on/off or hold to dim up/down, battery powered

NETWORK	
AVI-RAB-LTE	Remote access bridge
AVI-NTM	Network time manager with battery backup
CEILING MOUNT SENSORS	
AVI-KIT-SEN-DUCM	PIR motion and ultrasonic sensor kit
AVI-KIT-SEN-ICM	PIR motion and photocell sensor kit

For load controllers and additional accessory info, see hew.com/avi-on

ADDITIONAL CONTROL/DRIVER OPTIONS

Lumen restrictions apply: L8 minimum for DIM LINE driver. Lutron controls available with N Mounting Type only. 347V may require stepdown transformer, see product builder at hew.com/product-builder

CATALOG NUMBER	DESCRIPTION
BELOW CEILING ACCESS	
DIM	Dimming driver prewired for 0-10V low voltage applications
DIM1	1% dimming driver prewired for 0-10V low voltage applications
DIM LINE	Line voltage dimming driver (TRIAC and ELV compatible at 120V only)
TOP ACCESS REQUIRED	
AVI-LVFA/DA	Avi-on wireless fixture control for use with driver with 12V auxiliary power
AWN/DA	Lutron Athena wireless node integral fixture control, RF only, for use with driver with 12V auxiliary power
VRF/DBI/LDE1	Lutron Vive integral fixture control, RF only (DFCSJ-OEM-RF) and digital link interface, with Lutron Hi-lume 1% EcoSystem dimming LED driver
FCJS/DIM	Lutron Vive PowPak wireless fixture control with dimming driver
FCJS/DIM1	Lutron Vive PowPak wireless fixture control with 1% dimming driver
DALI	DALI dimming driver
DMX	0.1% dimming driver for DMX controls
LDE1	Lutron Hi-lume 1% EcoSystem dimming LED driver

