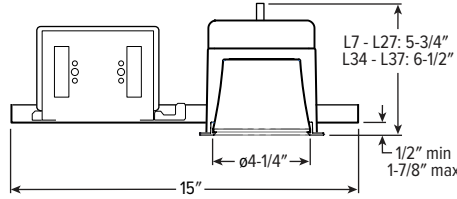


V4DR LED 4.5" Vandal-Resistant Downlight – Round



CATALOG #: _____

TYPE: _____

PROJECT: _____

ORDERING EXAMPLE: **V4DR - L14/835 - OPTIONS - CONTROL/DIM - UNV - LW - OF - WH - TRIM OPTIONS - N - F1**

HOUSING

SERIES	LUMENS ^[1]	CRI	CCT	OPTIONS	CONTROL	DRIVER ^[2]	VOLTAGE
V4DR	L7	700lm ^[3]	8 80	27 2700K	ATH Airtight construction	– None	UNV 120-277V
	L10	1,000lm	9 90 ^[4]	30 3000K	F Fuse	AVI-LVFA Avi-on wireless fixture control ^[10]	347 347V ^[12]
	L14	1,400lm		35 3500K	EM/7W 7-watt emergency battery ^[5]		
	L20	2,000lm		40 4000K	EM/10W 10-watt emergency battery ^[6]		
	L27	2,700lm		50 5000K	CP Chicago plenum (CCEA) ^[7]		
	L34	3,400lm			SDT Stepdown transformer ^[8]		
	L37	3,700lm			TC Thick ceiling construction ^[9]	DA Driver with 12V auxiliary power ^[11]	

TRIM

TRIM TYPE	DISTRIBUTION ^[13]	FLANGE TYPE	REFLECTOR FINISH	TRIM OPTIONS
L Flush lens	W Wide	OF 1/2" standard flange	WH White texture powder coat	MWT Textured white trim flange ^[17]
R Regressed lens	50° Flush		CS Clear semi-specular powder coat	IP IP65 rated trim
	50° Regressed		BL Black texture powder coat	PD Diffuse 1/8" polycarbonate lens ^[18]
	M Medium ^[14]		MB Black texture splay with white flange ^[16]	WET/CC Wet location, covered ceiling listed
	35° Flush			AM Anti-microbial ^[19]
	30° Regressed			
	N Narrow ^[15]			
	25° Flush			
	25° Regressed			

MOUNTING

MOUNTING TYPE ^[20]	MOUNTING HARDWARE ^[21]
N Open pan for new construction	F1 Integral 2-position fixed pan bracket, universal bar hanger included ^[23]
I IC-rated enclosure for new construction ^[22]	BA1 Adjustable butterfly pan bracket, bar hanger not included ^[24]
	CA1 Adjustable caterpillar pan bracket, universal bar hanger included ^[25]

ACCESSORIES

TPTX-10 TOOL T10 torx bit 1/4" drive tamper-resistant tool.^[26]

NOTES

- Lumen output based on L trim type, W distribution and WH finish, 3500K/80CRI. Actual lumens may vary +/-5%, see page 2 for FIXTURE PERFORMANCE DATA.
- See page 5 for ADDITIONAL DRIVER OPTIONS.
- Not available with EM/10W emergency batteries.
- Extended lead times may apply. Consult factory for availability.
- N Mounting Type only.
- N Mounting Type only.
- I Mounting Type required.
- May be required for 347V, see product builder at hew.com/product-builder
- Required for ceiling thicknesses greater than 1-1/4"
- DA Driver only. See page 5 for AVI-ON BLUETOOTH WIRELESS CONTROL DETAILS.
- Avi-on Controls only.
- Not available with EM batteries, DMX Driver, or Avi-on Controls.
- Beam angle based on WH reflector finish.
- Not available with L34 and L37 lumen packages.
- Not available with L34 and L37 lumen packages.
- R Trim Type only. Not available with MWT.
- Not available with WH Reflector Finish or L Trim Type.
- W distribution only.
- WH and BL Reflector Finishes only.
- Mounting hardware required, ordered separately, see MOUNTING HARDWARE ordering info. See page 3 for MOUNTING TYPE DETAILS.
- Additional mounting hardware options available. See page 4 for MOUNTING HARDWARE DETAILS.
- L14 lumen package max. L20 available, W distribution only.
- I Mounting requires external brackets.
- N Mounting Type only.
- N Mounting Type only.
- Tamper-resistant tool must be ordered separately. Please specify quantity required per project.

V4DR LED 4.5" Vandal-Resistant Downlight – Round

FEATURES

- Ideal for schools, behavioral health facilities, correctional institutions, and other vandal-prone areas
- Anti-ligature design with tamper-resistant fasteners
- Accepted by the New York State Office of Mental Health for use in inpatient facilities
- IP65-rated die-cast trim includes easy-to-clean flush lens
- Beam angles ranging from 25° narrow to 50° wide for tailored performance
- 4 inch aperture is unobtrusive in small scale spaces
- Die-cast trim choices include flush or regressed lens
- Contemporary design provides glare-free illumination for a soft ceiling appearance
- Easily adjust mounting arms below ceiling to adapt to a range of ceiling thicknesses
- Available with Avi-on wireless fixture controls

SPECIFICATIONS

- **HOUSING** – Die-cast aluminum trim housing with forged aluminum heat sink. Galvanized steel splice compartment with driver mounting plate/enclosure. Swing-out mounting arms field adjust for ceiling thickness from 1/2" – 1-7/8" max. TC option required for ceiling thicknesses greater than 1-1/4".
- **LENSED TRIM** – Die-cast aluminum frame with 1/8" micro-prismatic, polycarbonate lens with 1/8" clear polycarbonate underlay. Trim is secured with four stainless steel, tamper-resistant screws.
- **ELECTRICAL** – High-performance Class 2 C.O.B. LED array. Modular quick-connect plug for easy field-connection of LED light assembly to driver. Reported L70>55,000 hours. Reported L90>55,000 hours. Estimated L70 = 200,000 hours.
- **MOUNTING** – Recessed. 20 ga. galvanized steel mounting pan for new construction or IC-rated enclosure. Minimum 24" O.C. marked spacing required for L34 and L37 lumen packages.

- **LISTINGS** –
 - cCSAus conforms to UL STD 1598; Certified to CAN/CSA STD C22.2 No. 250.0 for dry and damp locations. LED light assembly conforms to UL 2108 for remote installation.
 - Suitable for wet location under covered ceiling when specified with WET/CC option.
 - IC-rated for direct contact with insulation when specified with I Mounting Type.
 - ISO 5, Class 100 rated.
 - City of Chicago Environmental Air approved when specified with CP option.
 - Complies with ASTM-E283 when specified with ATH option.
 - RoHS compliant.
- **WARRANTY** – 5-year limited warranty, see hew.com/warranty.



FIXTURE PERFORMANCE DATA

FLUSH LENS TRIM TYPE

	DISTRIBUTION	DELIVERED LUMENS	WATTAGE	EFFICACY (lm/W)
L7	W	674	10.7	63.0
	M	895	10.7	83.6
	N	914	10.7	85.4
L10	W	994	16.1	61.7
	M	1319	16.1	81.9
	N	1347	16.1	83.7
L14	W	1352	21.7	62.3
	M	1794	21.7	82.7
	N	1833	21.7	84.5
L20	W	2022	31.1	65.0
	M	2683	31.1	86.3
	N	2741	31.1	88.1
L27	W	2695	44.2	61.0
	M	3577	44.2	80.9
	N	3654	44.2	82.7
L34	W	3364	51.4	65.4
	M	-	-	-
	N	-	-	-
L37	W	3678	58.6	62.8
	M	-	-	-
	N	-	-	-

REGRESSED LENS TRIM TYPE

	DISTRIBUTION	DELIVERED LUMENS	WATTAGE	EFFICACY (lm/W)
L7	W	660	10.7	61.7
	M	895	10.7	83.6
	N	882	10.7	82.4
L10	W	972	16.1	60.4
	M	1319	16.1	81.9
	N	1300	16.1	80.7
L14	W	1232	21.7	56.8
	M	1795	21.7	82.7
	N	1769	21.7	81.5
L20	W	1979	31.1	63.6
	M	2685	31.1	86.3
	N	2646	31.1	85.1
L27	W	2638	44.2	59.7
	M	3579	44.2	81.0
	N	3527	44.2	79.8
L34	W	3292	51.4	64.0
	M	-	-	-
	N	-	-	-
L37	W	3599	58.6	61.4
	M	-	-	-
	N	-	-	-

MULTIPLIER TABLES

	COLOR TEMPERATURE	
	CCT	CONVERSION FACTOR
80 CRI	2700K	0.92
	3000K	0.98
	3500K	1.00
	4000K	1.01
	5000K	1.02

90 CRI	COLOR TEMPERATURE	
	CCT	CONVERSION FACTOR
	2700K	0.76
	3000K	0.79
	3500K	0.82
4000K	0.84	
5000K	0.88	

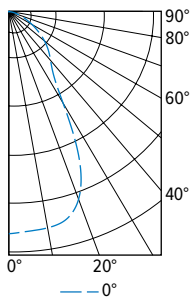
TRIM	
CATALOG NUMBER	CONVERSION FACTOR
PD	0.85

R TRIM	REFLECTOR FINISH	
	CATALOG NUMBER	CONVERSION FACTOR
	WH	1.00
	BL	0.79
CS	0.98	

- Photometrics tested in accordance with IESNA LM-79. Results shown are based on 25°C ambient temperature.
- Wattage shown is based on 120V input.
- Results based on 3500K, 80 CRI, actual lumens may vary +/-5%
- Use multiplier tables to calculate additional options.

PHOTOMETRY

V4DR-L14/835-DIM-UNV-LW-OF-WH Total Luminaire Output: 1352 lumens; 21.7 Watts | Efficacy: 62.3 lm/W | 80CRI; 3500K CCT

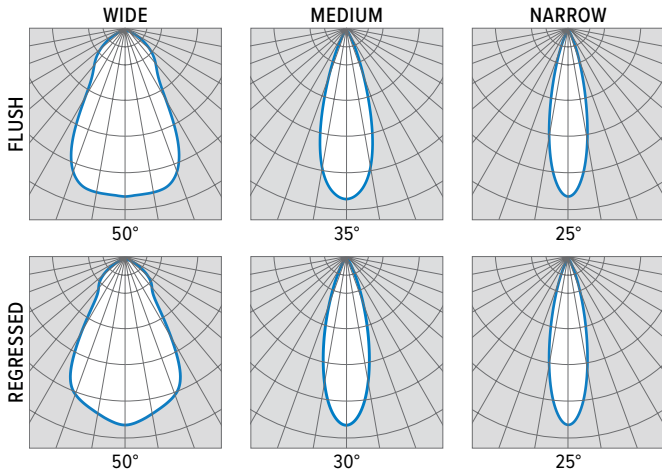


CANDLEPOWER DISTRIBUTION	VERTICAL ANGLE	HORIZONTAL ANGLE	ZONAL LUMENS
		0°	
	0	950	
	5	943	67
	15	925	148
	25	722	153
	35	336	101
	45	241	90
	55	161	65
	65	87	37
	75	37	15
	85	7	1
	90	0	

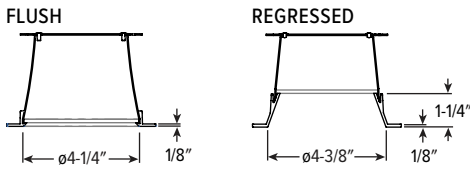
LUMEN SUMMARY	ZONE	LUMENS	% FIXTURE
	0 - 40	887	66
	0 - 60	1217	90
	0 - 90	1352	100
	0-180	1352	100



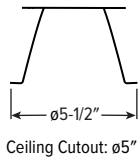
V4DR^{LED} 4.5" Vandal-Resistant Downlight – Round



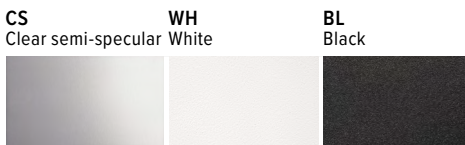
TRIM TYPE DETAILS



FLANGE TYPE DETAILS

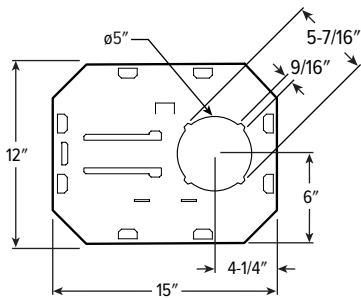


REFLECTOR FINISH DETAILS

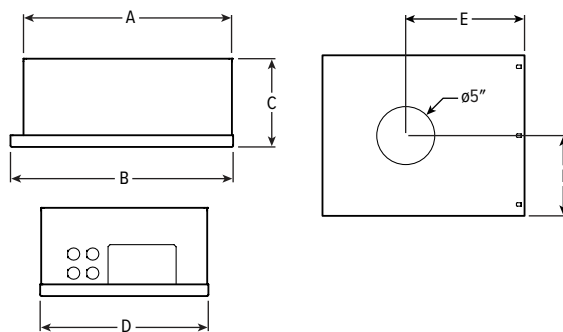


MOUNTING TYPE DETAILS

NEW CONSTRUCTION



IC-RATED



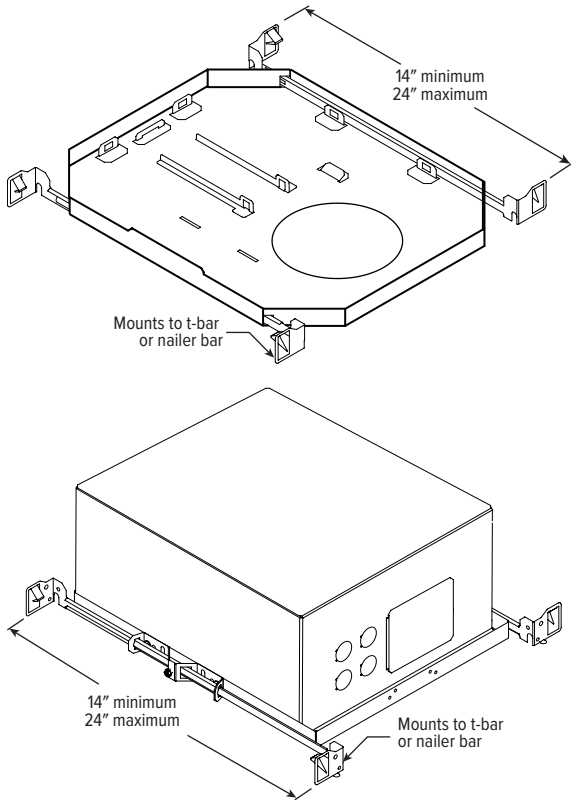
LUMENS	LENGTH					
	A	B	C	D	E	F
L7 - L14	15-3/16"	16"	6-3/8"	12-1/8"	9-1/2"	6-1/16"
L20	16-5/8"	17-1/2"	7-7/8"	14"	10-1/4"	7"



V4DR^{LED} 4.5" Vandal-Resistant Downlight – Round

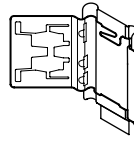
MOUNTING HARDWARE DETAILS

F1 Integral 2-position fixed pan bracket, universal bar hanger included

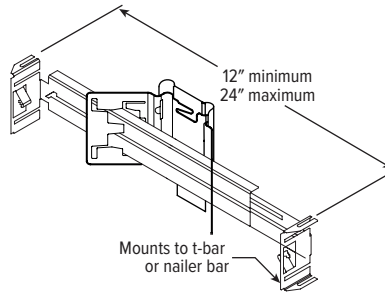


F1 with I Mounting Type

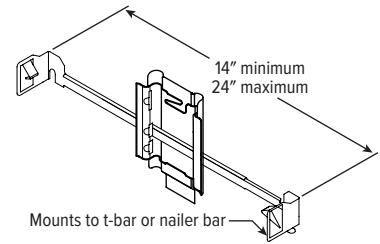
BA1 Adjustable butterfly pan bracket, bar hanger not included (N Mounting Type only)



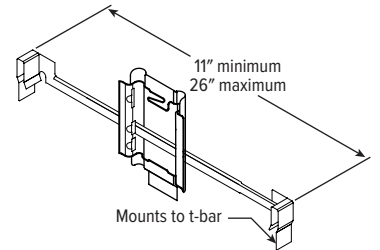
BA2 Adjustable butterfly pan bracket, heavy-duty universal bar hanger included (N Mounting Type only)



CA1 Adjustable caterpillar pan bracket, universal bar hanger included (N Mounting Type only)



CA2 Adjustable caterpillar pan bracket, t-bar hanger included (N Mounting Type only)



SEE NEXT PAGE FOR CONTROL DETAILS.



V4DR LED 4.5" Vandal-Resistant Downlight – Round

AVI-ON BLUETOOTH WIRELESS CONTROL DETAILS

AVI-ON NETWORK FEATURES

Simple

- Gateway-free distributed control
- Factory pre-commissioning
- Contractor friendly installation
- Occupancy/vacancy/daylight sensing

Scalable

- Virtually unlimited network size
- Spans small areas to large warehouses
- Flexible control strategies

Secure

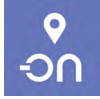
- Optional cloud connectivity
- UL IoT platinum security rating
- DLC 5.0 compliant

DIGITAL INSTALLATION TOOLS

Avi-On mobile apps provide intuitive, quick installation and commissioning. Pro tools are available to qualified installers.



Commissioning Mobile App

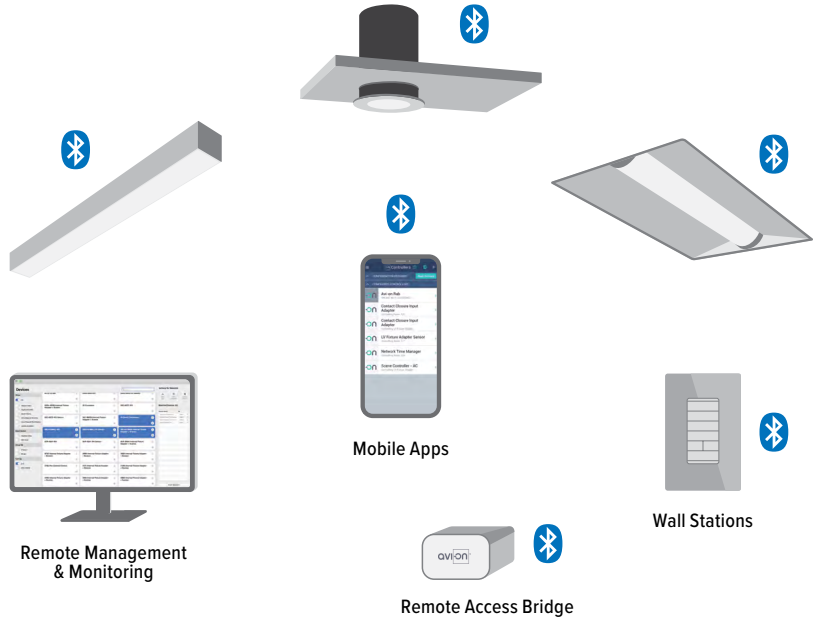


Zone Scanner Web App



Commissioning Pro App

SYSTEM COMPONENTS



The Bluetooth® word mark and logos are registered trademarks owned by Bluetooth SIG, Inc. and any use of such marks by Avi-On is under license. Other trademarks and trade names are those of their respective owners.

ACCESSORIES

WALL STATIONS	
AVI-2401AC	Scene controller - numbered 1-4, 120-277VAC
AVI-2402BAT	Scene controller - numbered 1-4, battery powered
AVI-2401AC-2	Dimmer with presets - percentages, 120-277VAC
AVI-2402BAT-2	Dimmer with presets - percentages, battery powered
AVI-SWITCH	AC paddle wall switch
AVI-DIMMER	Circuit dimmer switch
CONNECTIVITY	
AVI-2001RAB-01-P	Remote access bridge for projects 100 or greater
AVI-2001RAB-01-C	Remote access bridge for projects less than 100
AVI-KIT-NTM	Network time manager with Battery Backup
CEILING MOUNT SENSORS	
AVI-KIT-SEN-DUCM	PIR motion and ultrasonic sensor kit
AVI-KIT-SEN-ICM	PIR motion and photocell sensor kit

For load controllers and additional accessory info, see hew.com/avi-on

ADDITIONAL DRIVER OPTIONS

Lumen restrictions apply: L27 max for DMX driver, L27 max for Lutron drivers, L34 max for ELDO drivers. 347V may require stepdown transformer, see product builder at hew.com/product-builder. † Mounting Type not available with Lutron controls.

CATALOG NUMBER	DESCRIPTION
DIM	Dimming driver prewired for 0-10V low voltage applications
DIM1	1% dimming driver prewired for 0-10V low voltage applications
DIM LINE	Line voltage dimming driver (TRIAC and ELV compatible at 120V only)
DA	Dimming driver with 12V auxiliary
DMX	0.1% dimming driver for DMX controls
LDE1	Lutron Hi-lume 1% EcoSystem dimming LED driver
VRF/DBI/LDE1	Lutron Vive integral fixture control, RF only (DFCSJ-OEM-RF) and digital link interface, for use with Lutron Hi-lume 1% EcoSystem dimming LED driver
FCJS/DIM	Lutron Vive PowPak wireless fixture control with dimming driver
FCJS/DIM1	Lutron Vive PowPak wireless fixture control with 1% dimming driver

