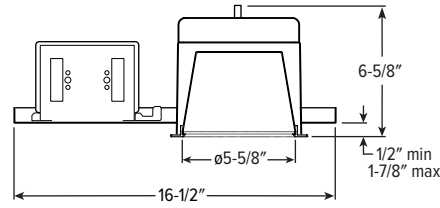


V6DR PoE | tunable **WHITE** 6" Vandal-Resistant Downlight – Round



CATALOG #: _____

TYPE: _____

PROJECT: _____

FEATURES

- Create scalable, highly functioning smart buildings with Platformatics Power over Ethernet controls
- Accepted by the New York State Office of Mental Health for use in inpatient facilities
- Ideal for schools, behavioral health facilities, correctional institutions, and other vandal-prone areas
- Anti-ligature design with tamper-resistant fasteners

SPECIFICATIONS

- **HOUSING** – Die-cast aluminum trim housing with forged aluminum heat sink. Galvanized steel splice compartment with driver mounting plate/enclosure. Swing-out mounting arms field adjust for ceiling thickness from 1/2" – 1-7/8" max. TC option required for ceiling thicknesses greater than 1-1/4".
- **LENSED TRIM** – Die-cast aluminum frame with 1/8" micro-prismatic, polycarbonate lens with 1/8" clear polycarbonate underlay. Trim is secured with four stainless steel, tamper-resistant screws.
- **ELECTRICAL** – High-performance Class 2 LED array. Modular quick-connect plug for easy field-connection of LED light assembly to driver. Reported L70>50,000 hours. Low-voltage DC fixture, to be fed by Class 2 power supply. Tunable White products use LEDs of multiple CCTs and may produce a perceptibly different shade of white from single-CCT products at the same CCT. All CCTs are within 3 MacAdam ellipses.
- **MOUNTING** – Recessed. 20 ga. galvanized steel mounting pan for new construction or IC-rated enclosure.
- **LISTINGS** –
 - cCSAus conforms to UL STD 1598; Certified to CAN/CSA STD C22.2 No. 250.0 for dry and damp locations. LED light assembly conforms to UL 2108 for remote installation.
 - Suitable for wet location under covered ceiling when specified with WET/CC option.
 - IC-rated for direct contact with insulation when specified with I Mounting Type.
 - ISO 5, Class 100 rated.
 - City of Chicago Environmental Air approved when specified with CP option.
 - Complies with ASTM-E283 when specified with ATH option.
 - RoHS compliant.
- **WARRANTY** – 5-year limited warranty, see hew.com/warranty.

SYSTEM REQUIREMENTS

- PoE-ready luminaires are connected to building power systems through network integration and require other components for complete PoE lighting system
- For additional PoE info, see hew.com/poe
- Consult factory for design support



ORDERING EXAMPLE: V6DR - P14/835 - OPTIONS - POE PR - LW - OF - WH - TRIM OPTIONS - N - F1
HOUSING TRIM MOUNT.

HOUSING

SERIES	LUMENS ^[1]	CRI	CCT	OPTIONS	CONTROL ^[2]
V6DR	P10	1,000lm	8 80	ATH Airtight construction	POE PR Power over Ethernet, Platformatics-ready
	P14	1,400lm	9 90 ^[3]	CP Chicago plenum (CCEA) ^[4]	
	P20	2,000lm		TC Thick ceiling construction ^[5]	
	P27	2,700lm			
	P38	3,800lm			
	P53	5,300lm			
			TW Tunable white (80 CRI, 2700K–5000K)		

TRIM

TRIM TYPE	DISTRIBUTION ^[6]	FLANGE TYPE	REFLECTOR FINISH	TRIM OPTIONS
L Flush lens	W Wide ^[7] 55° Flush	OF 1/2" standard flange	CS Clear semi-specular powder coat	MWT Textured white trim flange ^[11]
R Regressed lens			WH White texture powder coat	IP IP65 rated trim
	M Medium ^[8] 35° Flush		BL Black texture powder coat	PD Diffuse 1/8" polycarbonate lens ^[12]
	N Narrow ^[9] 25° Flush 25° Regressed		MB Black texture splay with white flange ^[10]	WET/CC Wet location, covered ceiling listed
				AM Anti-microbial ^[13]

MOUNTING

MOUNTING TYPE ^[14]	MOUNTING HARDWARE ^[15]
N Open pan for new construction	F1 Integral 2-position fixed pan bracket, universal bar hanger included ^[17]
I IC-rated enclosure for new construction ^[16]	BA1 Adjustable butterfly pan bracket, bar hanger not included ^[18]
	CA1 Adjustable caterpillar pan bracket, universal bar hanger included ^[19]

ACCESSORIES

TPTX-10 TOOL T10 torx bit 1/4" drive tamper-resistant tool.^[20]

NOTES

- Static white lumen output based on L trim type. W distribution and WH finish, 3500K/80CRI. See page 2 for FIXTURE PERFORMANCE DATA.
- See page 4 for NODE CONNECTION DETAILS. For additional PoE info, see hew.com/poe
- Extended lead times may apply. Consult factory for availability. Not available with Tunable White.
- I Mounting Type required.
- Required for ceiling thicknesses greater than 1-1/4"
- Beam angle based on WH reflector finish.
- Not available with P53 lumen package when specified with tunable white.
- Not available with P38 and P53 lumen packages.
- Not available with P38 and P53 lumen packages.
- R Trim Type only. Not available with MWT.
- Not available with WH Reflector Finish or L Trim Type.
- W distribution only.
- WH and BL Reflector Finishes only.
- Mounting hardware required, ordered separately, see MOUNTING HARDWARE ordering info. See page 3 for MOUNTING TYPE DETAILS.
- Additional mounting hardware options available. See page 4 for MOUNTING HARDWARE DETAILS.
- P10 and P14 lumen packages only. P20 available, W distribution only.
- I Mounting requires external brackets.
- N Mounting Type only.
- N Mounting Type only.
- Tamper-resistant tool must be ordered separately. Please specify quantity required per project.



V6DR PoE | tunable WHITE

6" Vandal-Resistant Downlight – Round

FIXTURE PERFORMANCE DATA

STANDARD

FLUSH LENS TRIM TYPE

	DIST.	DELIVERED LUMENS	WATTAGE	EFFICACY (lm/W)
P10	W	988	11.5	85.9
	M	1162	11.5	101.0
	N	1161	11.5	101.0
P14	W	1398	17.5	79.9
	M	1644	17.5	93.9
	N	1643	17.5	93.9
P20	W	1986	23.2	85.6
	M	2336	23.2	100.7
	N	2335	23.2	100.6
P27	W	2735	34.0	80.4
	M	3216	34.0	94.6
	N	3214	34.0	94.5
P38	W	3808	46.6	81.7
	M	-	-	-
	N	-	-	-
P53	W	5261	69.0	76.2
	M	-	-	-
	N	-	-	-

TUNABLE WHITE

FLUSH LENS TRIM TYPE

	DIST.	DELIVERED LUMENS	WATTAGE	EFFICACY (lm/W)
P10	W	900	11.6	77.6
	M	1058	11.6	91.2
	N	1058	11.6	91.2
P14	W	1435	17.5	82.0
	M	1688	17.5	96.5
	N	1687	17.5	96.4
P20	W	1917	22.6	84.8
	M	2255	22.6	99.8
	N	2253	22.6	99.7
P27	W	2799	34.6	80.9
	M	3292	34.6	95.1
	N	3290	34.6	95.1
P38	W	3339	42.5	78.6
	M	-	-	-
	N	-	-	-
P53	W	-	-	-
	M	-	-	-
	N	-	-	-

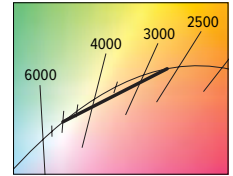
MULTIPLIER TABLES

	COLOR TEMPERATURE		
	CCT	LUMENS	
		STANDARD	TUNABLE WHITE
80 CRI	2700K	0.92	0.83
	3000K	0.98	1.00
	3500K	1.00	0.99
	4000K	1.01	1.00
	5000K	1.02	0.98

90 CRI	2700K	0.76	-
	3000K	0.79	-
	3500K	0.82	-
	4000K	0.84	-
	5000K	0.88	-

TRIM	
CATALOG NUMBER	CONVERSION FACTOR
PD	0.85

REFLECTOR FINISH	
CATALOG NUMBER	CONVERSION FACTOR
WH	1.00
BL	0.79
CS	0.98



- Photometrics tested in accordance with IESNA LM-79. Results shown are based on 25°C ambient temperature.
- Standard results based on 3500K/80 CRI, actual lumens may vary +/-5%
- Tunable white results based on 4000K/80 CRI, actual lumens may vary +/-5%
- Use multiplier tables to calculate additional options.

REGRESSED LENS TRIM TYPE

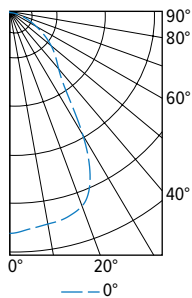
	DIST.	DELIVERED LUMENS	WATTAGE	EFFICACY (lm/W)
P10	W	926	11.5	80.5
	M	1142	11.5	99.3
	N	1161	11.5	101.0
P14	W	1310	17.5	74.9
	M	1616	17.5	92.3
	N	1643	17.5	93.9
P20	W	1862	23.2	80.3
	M	2296	23.2	99.0
	N	2335	23.2	100.6
P27	W	2564	34.0	75.4
	M	3162	34.0	93.0
	N	3215	34.0	94.6
P38	W	3570	46.6	76.6
	M	-	-	-
	N	-	-	-
P53	W	4932	69.0	71.5
	M	-	-	-
	N	-	-	-

REGRESSED LENS TRIM TYPE

	DIST.	DELIVERED LUMENS	WATTAGE	EFFICACY (lm/W)
P10	W	844	11.6	72.8
	M	1041	11.6	89.7
	N	1058	11.6	91.2
P14	W	1345	17.5	76.9
	M	1659	17.5	94.8
	N	1687	17.5	96.4
P20	W	1797	22.6	79.5
	M	2217	22.6	98.1
	N	2254	22.6	99.7
P27	W	2624	34.6	75.8
	M	3236	34.6	93.5
	N	3291	34.6	95.1
P38	W	3130	42.5	73.6
	M	-	-	-
	N	-	-	-
P53	W	-	-	-
	M	-	-	-
	N	-	-	-

PHOTOMETRY

V6DR-P14/835-POE PR-LW-OF-WH Total Luminaire Output: 1398 lumens; 17.5 Watts | Efficacy: 79.9 lm/W | 80 CRI; 3500K CCT

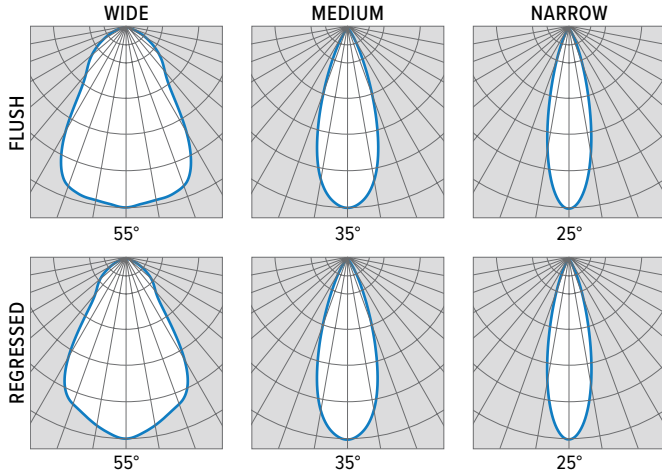


CANDLEPOWER DISTRIBUTION	VERTICAL ANGLE	HORIZONTAL ANGLE	ZONAL LUMENS
		0°	
	0	890	
	5	876	83
	15	855	241
	25	737	331
	35	377	245
	45	252	194
	55	170	152
	65	95	95
	75	42	45
	85	9	11
	90	1	

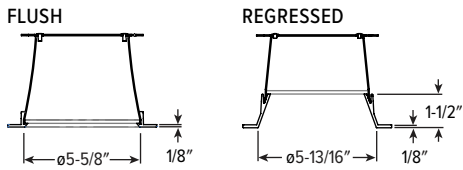
LUMEN SUMMARY	ZONE	LUMENS	% FIXTURE
	0 - 40	900	64
	0 - 60	1247	89
	0 - 90	1398	100
	0 - 180	1398	100



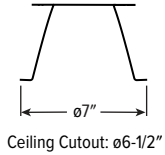
V6DR PoE | tunable **WHITE** 6" Vandal-Resistant Downlight – Round



TRIM TYPE DETAILS



FLANGE TYPE DETAILS

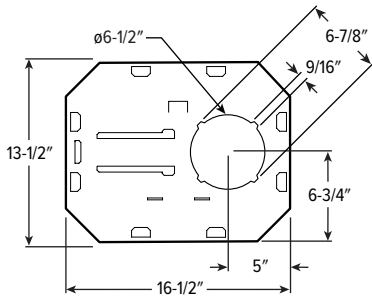


REFLECTOR FINISH DETAILS

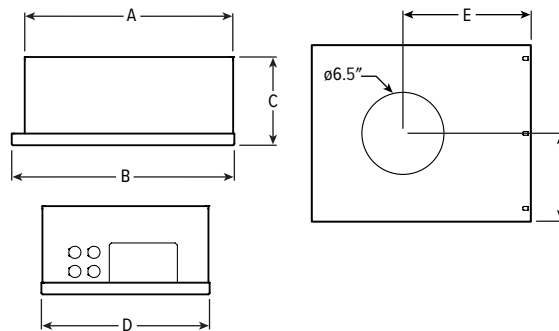


MOUNTING TYPE DETAILS

NEW CONSTRUCTION



IC-RATED

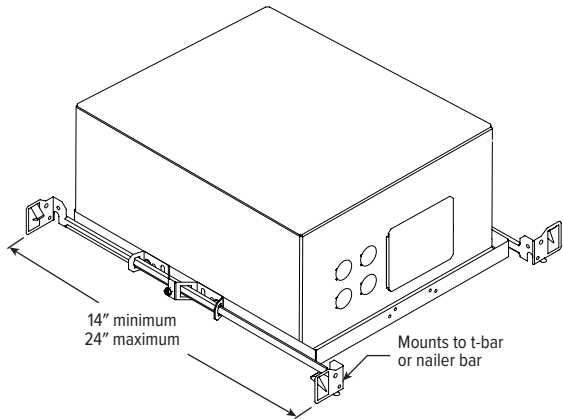
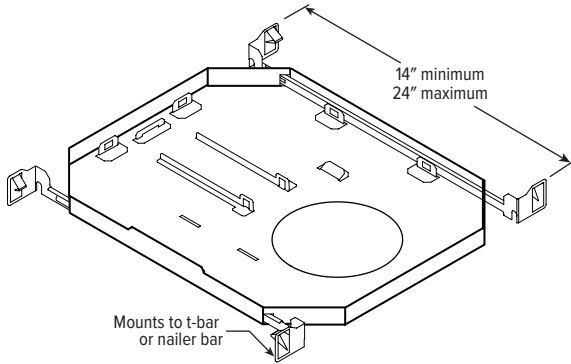


LUMENS	LENGTH					
	A	B	C	D	E	F
P10 - P20	15-3/16"	16"	6-3/8"	12-1/8"	9-1/2"	6-1/16"

V6DR PoE | tunable WHITE 6" Vandal-Resistant Downlight – Round

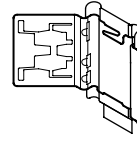
MOUNTING HARDWARE DETAILS

F1 Integral 2-position fixed pan bracket, universal bar hanger included

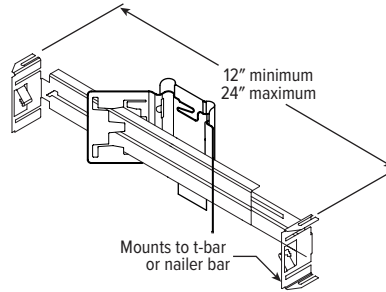


F1 with I Mounting Type

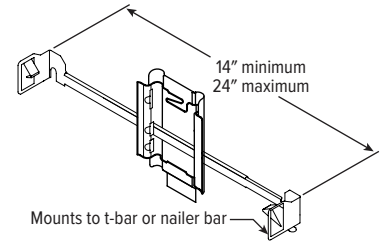
BA1 Adjustable butterfly pan bracket, bar hanger not included (N Mounting Type only)



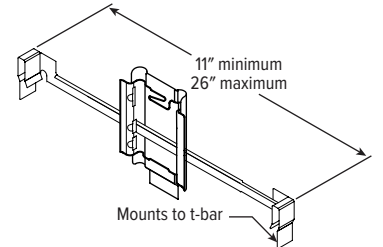
BA2 Adjustable butterfly pan bracket, heavy-duty universal bar hanger included (N Mounting Type only)



CA1 Adjustable caterpillar pan bracket, universal bar hanger included (N Mounting Type only)



CA2 Adjustable caterpillar pan bracket, t-bar hanger included (N Mounting Type only)



NODE CONNECTION DETAILS

Includes 24" cable with 4-position mating connector for Platformatics POE-LN2 node. See node spec sheet for details: platformatics.com/product/poe-ln2

