

Straight Arm Front view
EPA: 0.46/Weight: 8 Lbs.

CATALOG #: _____

TYPE: _____

PROJECT: _____

FEATURES

- Contoured styling blends seamlessly with landscaping
- Precise light control with six standard NEMA distributions
- Versatile suite of architectural mounting arms
- Made Right Here[®] in the USA

SPECIFICATIONS

- HOUSING** – Die-cast aluminum enclosure, sealed to protect electrical components.
- THERMAL MANAGEMENT** – Integral die-cast aluminum heatsink provides passive thermal management. Rated -30°C to 50°C ambient operating temperature.
- OPTICAL SYSTEM** – Precision, injection-molded, refractive acrylic lensing produces standard NEMA floodlight distributions. Clear tempered glass lens.
- LED ASSEMBLY** – Circuit board design incorporates TVS (transient-voltage-suppression) diodes to protect against ESD events. ANSI 3000K, 4000K, and 5000K CCT, minimum 70 CRI LEDs.
- LED DRIVER** – Class 2 constant-current driver, 0-10V dimming.
- ELECTRICAL** – 120-277, 347, and 480 VAC input range; 50-60Hz; power factor >.90; THD <20% at full load. FCC Class A compliant. 10kA/10kV surge protection standard. L70 >50,000 hours per IES TM-21.
- FINISH** – Super durable polyester powder coat bonded to phosphate-free, multi-stage pretreated metal, meets and exceeds AAMA 2604 specifications for outdoor durability.
- MOUNTING** – Straight arm slip-fits $\phi 1-1/2"$ ($\phi 1-7/8"$ O.D.) tenon. Curved arm mounts to vertical surface or pole, downlight orientation only using cast adapter and mounting plate provided. Must be anchored to adequate structure that can safely support fixture weight. Fixture not designed to be mounted in horizontal orientation with glass facing upwards at 0 degrees.
- LISTINGS** –
 - cCSAus listed to STD 22.2 No. 250.0 certified as luminaire suitable for wet locations.
 - DesignLights Consortium qualified product. Not all versions of this product may be DLC qualified, see the DLC Qualified Products List at www.designlights.org/QPL.
 - IP66 rated.
 - Meets the American National Standard for Roadway and Area Lighting Equipment – Luminaire Vibration (ANSI C136.31-2010). Straight arm fixture only.
 - RoHS compliant.
 - Title 24 compliant with OCCWS FSP-211-L_ option.
- WARRANTY** – 5-year limited warranty, see hew.com/warranty.

ORDERING EXAMPLE: VF1 - L35/750 - MF - SR - DBZ - OPTIONS - DIM - UNV

ORDERING INFO

SERIES	LUMENS ^[1]	CRI	CCT	DISTRIBUTION ^[2]
VF1	L20	2,000lm	70	30 3000K
	L35	3,500lm	40 4000K	NS Narrow spot (3H x 3V)
			50 5000K	MF Medium flood (5H x 5V)
				WF Wide flood (6H x 6V)
				HS Horizontal spot (7H x 5V)
				VF Vertical flood (5H x 5V)
				HF Horizontal flood (7H x 5V)

MOUNTING^[3]

- SR Straight arm^[5]
- CU Curved arm^[6]

FINISH OPTIONS^[4]

- BLK Black (RAL #9004)
- DBZ Dark bronze
- DBR Medium bronze
- GRAY Standard gray
- SLV Satin aluminum (RAL #9006)
- WHT White (RAL #9003)

OPTIONS^[7]

- PC 3/16" clear polycarbonate button-style photocell^[8]
- WG Wireguard, 11-gauge tempered steel with chrome powder-coat finish.^[9]
- FVS Flush vandal shield, 3/16" clear polycarbonate.^[10]
- VF1CS Cutoff shield^[11]
- VF1FS Full cutoff shield^[12]

DRIVER

- DIM Dimming driver prewired for 0-10V low voltage applications

VOLTAGE

- 120 120V
- 208 208V
- 240 240V
- 277 277V
- UNV 120-277V
- 347 347V
- 480 480V

NOTES

- Lumen output based on 3500 CCT. Actual lumens may vary +/-5%, see page 2 for FIXTURE PERFORMANCE DATA. Additional lumen package available, see options
- See page 2 for DISTRIBUTION DETAILS.
- See page 2 for FINISH OPTIONS.
- See page 4 for MOUNTING OPTIONS – STRAIGHT ARM.
- Vertical surface mount, downlight orientation only, includes cast adapter and mounting plate

- See page 4 for OPTIONS DETAILS.
- Factory-installed. 120V, 208V, 240V, or 277V only; must specify voltage.
- Factory-installed
- Factory-installed
- Field-installed
- Field-installed



FIXTURE PERFORMANCE DATA

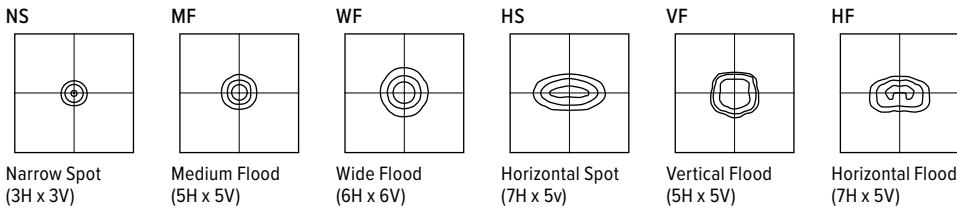
	WATTAGE	CURRENT (MA)	DISTRIBUTION	EFFICACY (lm/W)	FLUX (LM)	NEMA CLASSIFICATION	
						HORIZONTAL	VERTICAL
L20	18	350	NS	97	1742	3	3
			MF	95	1711	5	5
			WF	104	1853	6	6
			HS	103	1836	7	5
			VF	108	1942	5	5
			HF	108	1948	7	5
L35	36	700	NS	87	3131	3	3
			MF	85	3075	5	5
			WF	93	3331	6	6
			HS	92	3300	7	5
			VF	97	3490	5	5
			HF	97	3501	7	5

LIFETIME VS. AMBIENT TEMPERATURE

AMBIENT TEMP.	LUMEN PACKAGE	REPORTED L70 HOURS (TM-21)	CALCULATED HOURS		
			L70	L80	L90
25°C	L20	>60,000	173,000	108,000	50,000
	L35		111,000	70,000	34,000
50°C	L20	>60,000	101,000	64,000	31,000
	L35		64,000	40,000	20,000

- Efficacy and flux shown are for 5000K CCT. Flux multipliers: 0.96 for 4000K, 0.86 for 3000K
- Photometrics tested in accordance with IESNA LM-79. Results shown are at 25°C ambient temperature.

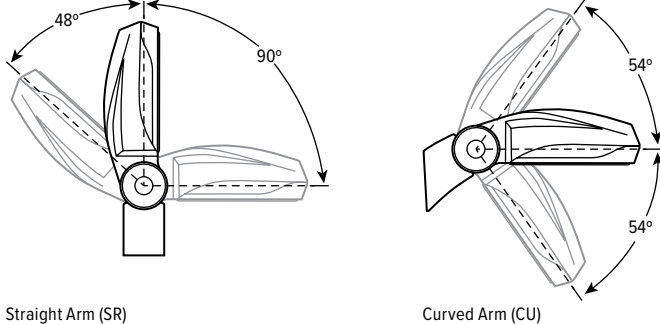
DISTRIBUTION DETAILS



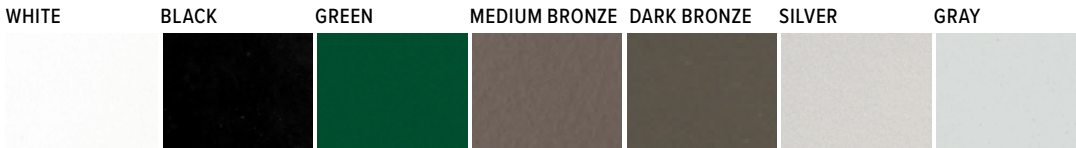
FIXTURE DETAILS

FIXTURE ADJUSTMENT DETAIL

Easily adjusts with locking teeth in 6° increments.



FINISH OPTIONS

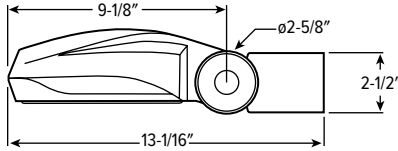


For custom color, please specify RAL code or a manufacturer code with description. All custom colors other than RAL require two sample swatches, minimum 1" square.

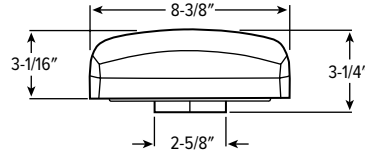
CROSS SECTIONS

STRAIGHT ARM

(EPA: 0.46/Weight: 8 lbs)



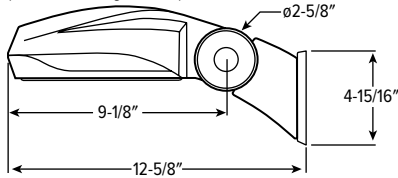
Side View



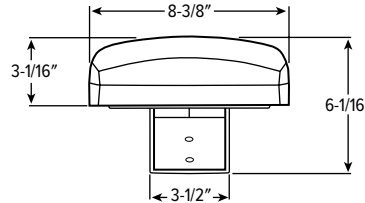
Front View

CURVED ARM

(EPA: 0.46/Weight: 8 lbs)



Side View

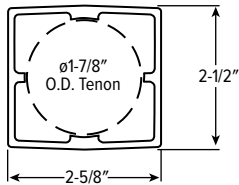


Front View

ARM MOUNTING DETAILS

STRAIGHT ARM (SR) MOUNTING

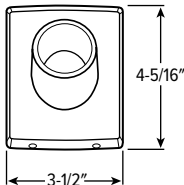
- Mounts horizontally or vertically to $\phi 1-1/2"$ ($\phi 1-7/8"$ O.D.) tenon.
- Up or down light applications.
- 360° rotation on mounting tenon.
- Additional mounting accessories available. See page 4 for MOUNTING OPTIONS – STRAIGHT ARM.



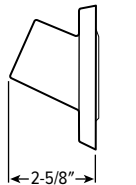
Fixture arm end view

CURVED ARM (CU) MOUNTING

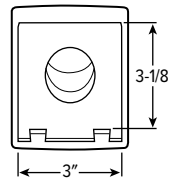
- Mounts to vertical surface or pole, downlight orientation only, using cast adapter and mounting plate provided.
- Must be anchored to adequate structure that can safely support fixture weight.



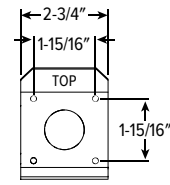
Adapter front view



Adapter Side View



Adapter back view



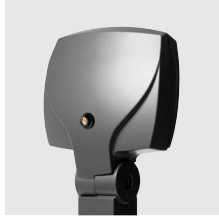
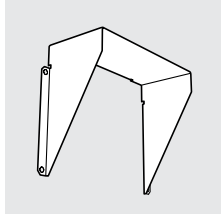
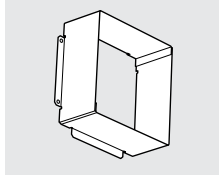
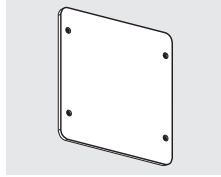
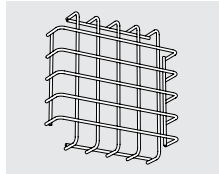


Mounting plate

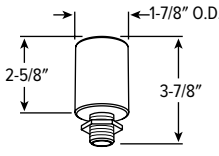
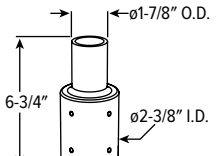
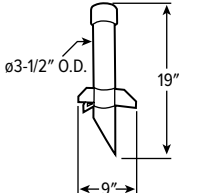
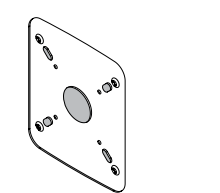


VF1^{LED} Voltaire Small Architectural Flood Light

OPTIONS DETAILS

<p>FVS</p> 	<p>FVS Flush vandal shield, 3/16" clear polycarbonate, factory-installed. Fixture can accommodate only one face-mounted option.</p>	<p>WG</p> 	<p>WG Wireguard, 11-gauge tempered steel with chrome powder-coat finish, factory-installed. Fixture can accommodate only one face-mounted option.</p>
<p>PC</p> 	<p>PC Factory-installed button-style photocell, (120V, 208V, 240V, or 277V only; must specify voltage)</p>	<p>CUTOFF SHIELD</p> 	<p>VF1CS-___ Cutoff shield, 1/16" thick aluminum, field-installed. Must specify finish. Includes (4) #6-32 screws. 6-1/2" x 5-1/4" x 2-1/2" EPA: 0.12/Weight: 0.20 Lbs. Example: VF1CS-DBZ</p>
<p>FULL CUTOFF SHIELD</p> 	<p>VF1FS-___ Full cutoff shield, 1/16" thick aluminum, field-installed. Must specify finish. Includes (4) #6-32 screws. 6-5/8" x 6-5/8" x 2-1/2" EPA: 0.19/Weight: 0.39 Lbs. Example: VF1FS-DBZ</p>	<p>VANDAL SHIELD KIT</p> 	<p>VF1FVS Flush vandal shield kit, 3/16" clear polycarbonate, field-installed. Includes (4) #6-32 screws and clips. EPA: 0.01/Weight: 0.26 Lbs.</p>
<p>WIREGUARD KIT</p> 	<p>WG-VF1 Wireguard kit, 11-gauge tempered steel with chrome powder-coat finish, field-installed. Includes (8) #6-32 screws and clips. EPA: 0.12/Weight: 0.38 Lbs.</p>		

MOUNTING OPTIONS – STRAIGHT ARM

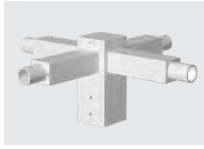
<p>THREADED ADAPTER</p> 	<p>VF1TA 1/2" NPS stainless steel threaded nipple with hex locknut on a cast aluminum anodized ϕ1-7/8" O.D. adapter EPA: 0.00/Weight: 0.61 Lbs.</p>	<p>TENON REDUCER</p> 	<p>VF1TR-___ Die-cast aluminum adapter/reducer, slipfits a ϕ2" tenon. Must specify finish. EPA: 0.08/Weight: 1.37 Lbs. Example: VF1TR-DBZ</p>
<p>GROUND STAKE</p> 	<p>STK Ground stake, molded black plastic with integral splice compartment and 1/2" NPS threaded entry point for fixture mounting (requires VF1TA option, above)</p>	<p>WALL COVER</p> 	<p>VF1WC-___ 4" j-box cover for curved arm fixture, must specify finish. Example: VF1WC-DBZ</p>



STRAIGHT ARM MOUNTING OPTIONS

NOTE: Tenons cannot be mounted in down orientation. Mounting accessories are for use with straight arm (SR) fixtures only.

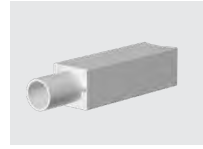
TMHT



- POLE TOP TENON - HORIZONTAL FIXTURE MOUNT**
- Mounts on 2-3/8" - 3" pole top tenons
 - Round or square to match pole shape
 - Mounting configurations for one to four fixtures
 - Center tenon option available

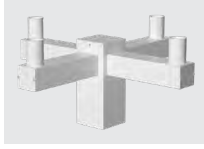
Example: VF1-TMHT-SQ-T238-S-DBZ

DMHT



- DIRECT MOUNT - HORIZONTAL FIXTURE**
- Mounts to round or square poles
- Example: VF1-DMHT-SQ-S-DBZ

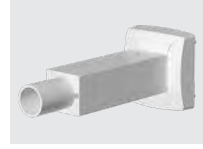
TMVT



- POLE TOP TENON - VERTICAL FIXTURE MOUNT**
- Mounts on 2-3/8" - 3" pole top tenons
 - Round or square to match pole shape
 - Vertical fixture tenons
 - Mounting configurations for one to four fixtures
 - Center tenon option available

Example: VF1-TMVT-SQ-T238-S-DBZ

WMHT



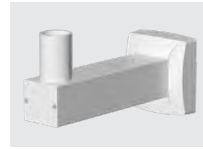
- WALL MOUNT - HORIZONTAL FIXTURE**
- Cast cover matches fixture aesthetics
- Example: VF1-WMHT-DBZ

HT



- HORIZONTAL POLE TOP TENON**
- Mounts on 2-3/8" - 3" pole top tenons
 - Round or square to match pole shape
 - Horizontal fixture tenons
 - Mounting configurations for one to four fixtures
 - Center tenon option available
- Example: VF1-HT-SQ-T238-S-DBZ

WMVT



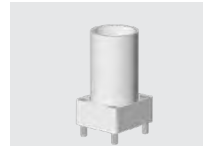
- WALL MOUNT - VERTICAL FIXTURE**
- Cast cover matches fixture aesthetics
 - Fixtures can be rotated 360° around tenon
- Example: VF1-WMVT-DBZ

VT



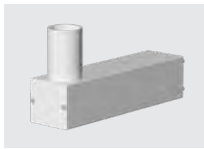
- VERTICAL POLE TOP TENON**
- Mounts on 2-3/8" - 3" pole top tenons
 - Round or square to match pole shape
 - Vertical fixture tenon
- Example: VF1-VT-SQ-T238-DBZ

SM



- SURFACE MOUNT**
- Mounts to any flat surface, with tenon in upward or horizontal orientation
 - Fixtures can be rotated 360° around tenon
- Example: VF1-SM-DBZ

DMVT



- DIRECT MOUNT - VERTICAL FIXTURE**
- Mounts to round or square poles
 - Fixtures can be rotated 360° around tenon
- Example: VF1-DMVT-SQ-S-DBZ

ST



- STANCHION MOUNT**
- Profile matches VF1 and VF2 arms
 - Stanchion arm base cover and fixture rotate 360° around base
- Example: VF1-ST-DBZ

ORDERING INFORMATION

EXAMPLE: VF1-TMVT-SQ-T238-S-DBZ-OPTIONS						
	SERIES	SIZE/SHAPE	TENON SIZE (BY OTHERS)	MOUNTING CONFIGURATION	FINISH OPTIONS	OPTIONS
TENON MOUNT	VF1-TMHT VF1-TMVT VF1-HT	SQ Square RD Round	T238 ø2-3/8" O.D. T278 ø2-7/8" O.D. T3 ø3" O.D.	S Single D90 Double @ 90° D180 Double @ 180° T90 Triple @ 90° T120 Triple @ 120° ¹ Q90 Quad @ 90°		CT Center tenon
	VF1-VT	SQ Square RD Round	T238 ø2-3/8" O.D. T278 ø2-7/8" O.D. T3 ø3" O.D.		BLK Black DBZ Dark bronze DBR Medium bronze GRAY Standard gray SLV Satin aluminum WHT White	
DIRECT MOUNT	VF1-DMVT VF1-DMHT	SQ Square pole 3R 3" round pole 4R 4" round pole 5R 5" round pole		S Single D90 Double @ 90° D180 Double @ 180° T90 Triple @ 90° T120 Triple @ 120° ¹ Q90 Quad @ 90°		
	VF1-WMHT VF1-WMVT VF1-SM VF1-ST					

¹ For RD option only



LOAD DATA

MODEL NUMBER	ARM LENGTH ¹	MOUNTING CONFIGURATION	EPA ²	WEIGHT
VF1-SM		-	0.04	0.41
VF1-ST	10"	-	0.75	3.48
VF1-DMHT-SQ VF1-DMHT-RD	8"	S	0.42	2.33
		D90		
		D180		
		T90		
		T120		
		Q90		
VF1-DMVT-SQ VF1-DMVT-RD	10"	S	0.51	2.39
		D90		
		D180		
		T90		
		T120		
		Q90		
VF1-WMHT	8"	-	0.61	3.51
VF1-WMVT	10"	-	0.71	3.58
VF1-TMHT-RD	8"	S	1.02	7.67
		D90	1.36	9.79
		D180	1.36	9.79
		T90	1.69	11.91
		T120	1.64	11.91
		Q90	2.02	14.03
VF1-TMVT-RD	10"	S	1.11	7.35
		D90	1.54	9.15
		D180	1.55	9.15
		T90	1.96	10.95
		T120	1.9	10.95
		Q90	2.65	12.75
VF1-TMHT-SQ	8"	S	1.17	9.34
		D90	1.44	11.48
		D180	1.45	11.48
		T90	1.58	13.68
		Q90	1.82	15.76
VF1-TMVT-SQ	10"	S	1.27	9.06
		D90	1.58	10.86
		D180	1.69	10.86
		T90	2	12.66
		Q90	2.33	14.46
VF1-VT-RD	-	-	0.69	5.89
VF1-VT-SQ	-	-	0.83	7.47
VF1-HT-RD	-	S	0.69	5.77
		D90		6.25
		D180		6.25
		T90		6.73
		T120		6.73
		Q90		7.21
VF1-HT-SQ	-	S	0.83	7.42
		D90		7.64
		D180		7.64
		T90		7.86
		Q90		8.08

¹ Maximum arm length cannot exceed 28.188" long in any configuration.

² EPA is calculated for mounting options only.

