

CATALOG #: \_\_\_\_\_

TYPE: \_\_\_\_\_

PROJECT: \_\_\_\_\_



### FEATURES

- Contoured styling blends seamlessly with landscaping and various architectural styles
- Precise light control with six standard NEMA distributions
- Versatile suite of architectural mounting arms meet the demands of a wide range of flood lighting applications
- Rugged and sealed die-cast housing with integral knuckle design provides durability
- Wireless in-fixture control solutions available
- Made Right Here® in the USA

### SPECIFICATIONS

- HOUSING** – Die-cast aluminum enclosure, sealed to protect electrical components.
- THERMAL MANAGEMENT** – Integral die-cast aluminum heatsink provides passive thermal management. Rated -30°C to 45°C ambient operating temperature.
- OPTICAL SYSTEM** – Precision, injection-molded, refractive acrylic lensing produces standard NEMA floodlight distributions. Clear tempered glass lens.
- LED ASSEMBLY** – Circuit board design incorporates TVS (transient-voltage-suppression) diodes to protect against ESD events. ANSI 3000K, 4000K, and 5000K CCT, minimum 70 CRI LEDs.
- LED DRIVER** – Class 2 constant-current driver, 0-10V dimming.
- ELECTRICAL** – 120-277, 347, and 480 VAC input range; 50-60Hz; power factor >.90; THD <20% at full load. FCC Class A compliant. 10kA/10kV surge protection standard. See fixture performance data for lumen maintenance.
- FINISH** – Super durable polyester powder coat bonded to phosphate-free, multi-stage pretreated metal, meets and exceeds AAMA 2604 specifications for outdoor durability.
- MOUNTING** – Straight arm slip-fits ø2" (ø2-3/8" O.D.) tenon. Curved arm mounts to vertical surface or pole, downlight orientation only using cast adapter and mounting plate provided. Must be anchored to adequate structure that can safely support fixture weight. See page 5 for LOAD DATA. Fixture not designed to be mounted in horizontal orientation with glass facing upwards at 0 degrees.
- LISTINGS** –
  - cCSAus listed to STD 22.2 No 250.0 certified as luminaire suitable for wet locations.
  - IP66 rated.
  - Meets the American National Standard for Roadway and Area Lighting Equipment – Luminaire Vibration (ANSI C1363.31-2010). Straight arm fixture only.
  - RoHS compliant.
  - Complies with the Buy American Act and other federal regulations. Request certification at [www.baa.com](http://www.baa.com).
- WARRANTY** – 5-year limited warranty, see [www.baa.com/warranty](http://www.baa.com/warranty).

ORDERING EXAMPLE: VF2 - L70/740 - MF - SR - DBZ - OPTIONS - CONTROL/DIM - UNV

### ORDERING INFO

SERIES	LUMENS <sup>[1]</sup>	CRI	CCT	DISTRIBUTION <sup>[2]</sup>
VF2	L57 5,700lm	70	30 3000K	NS Narrow spot (3H x 3V)
	L70 7,000lm		40 4000K	MF Medium flood (5H x 5V)
	L88 8,800lm		50 5000K	WF Wide flood (6H x 6V)
	L106 10,600lm			HS Horizontal spot (7H x 5V)
				VF Vertical flood (5H x 5V)
				HF Horizontal flood (7H x 5V)

### MOUNTING <sup>[3]</sup>

SR Straight arm  
CU Curved arm <sup>[6]</sup>

### FINISH OPTIONS <sup>[4]</sup>

BLK Black (RAL #9004)  
DBZ Dark bronze  
DBR Medium bronze  
GRAY Standard gray  
GRN Green (RAL #6005)  
SLV Satin aluminum (RAL #9006)  
WHT White (RAL #9003)

### OPTIONS <sup>[5]</sup>

PC Factory-installed button-style photocell <sup>[7]</sup>  
WG Wireguard, 11-gauge tempered steel with chrome powder-coat finish, factory-installed  
WG-VF2 Wireguard kit, 11-gauge tempered steel with chrome powder-coat finish, field-installed  
FVS Flush vandal shield, 3/16" clear polycarbonate, factory-installed  
VF2CS-\_\_\_ Cutoff shield, 1/16" thick aluminum, field-installed <sup>[8]</sup>  
VF2FS-\_\_\_ Full cutoff shield, 1/16" thick aluminum, field-installed. <sup>[9]</sup>  
VF2FVS Flush vandal shield kit, 3/16" clear polycarbonate, field-installed

### CONTROL <sup>[10]</sup>

– None  
AVI-IFAC-OA Avi-on wireless fixture control with outdoor antenna

### DRIVER

DIM Driver with external dimming wires prewired for 0-10V low voltage applications

### VOLTAGE

120 120V  
208 208V  
240 240V  
277 277V  
UNV 120-277V  
347 347V <sup>[11]</sup>  
480 480V <sup>[12]</sup>

### MOUNTING ACCESSORIES <sup>[13]</sup>

See page 4 for TENON MOUNT ACCESSORY OPTIONS.

VF2TA Threaded adapter <sup>[14]</sup>  
STK Ground stake <sup>[15]</sup>

### NOTES

- Lumen output based on 4000K CCT. Actual performance may vary +/-5%, see page 2 for FIXTURE PERFORMANCE DATA.
- See page 2 for DISTRIBUTION DETAILS.
- See page 3 for MOUNTING DETAILS.
- See page 3 for FINISH OPTIONS.
- See page 3 for OPTIONS DETAILS.
- Vertical surface mount, downlight orientation only, includes cast adapter and mounting plate.
- 120V, 208V, 240V, or 277V only; must specify voltage.
- Must specify finish. Example: VF2CS-DBZ
- Must specify finish. Example: VF2FS-DBZ
- See page 6 for AVI-ON BLUETOOTH WIRELESS CONTROL DETAILS.
- Not available with Avi-on Controls.
- Not available with Avi-on Controls.
- See page 3 for MOUNTING DETAILS.
- SR Mounting only.
- SR Mounting only. Requires VF2TA option.



## FIXTURE PERFORMANCE DATA

	DISTRIBUTION	FLUX (LM)	WATTAGE	EFFICACY (lm/W)	NEMA CLASSIFICATION	
					HORIZONTAL	VERTICAL
L57	NS	6240	43	145	3	3
	MF	5799		135	6	6
	WF	5788		135	6	6
	HS	6176		144	7	5
	VF	6167		143	5	5
	HF	6299		146	7	6
L70	NS	7647	55	139	3	3
	MF	7106		129	6	6
	WF	7093		129	6	6
	HS	7569		138	7	5
	VF	7557		137	5	6
	HF	7719		140	7	5
L88	NS	9489	75	127	3	3
	MF	8818		118	6	6
	WF	8802		117	6	6
	HS	9392		125	7	5
	VF	9378		125	5	5
	HF	9579		128	7	6
L106	NS	11458	98	117	3	3
	MF	10648		109	6	6
	WF	10628		108	6	6
	HS	11341		116	7	5
	VF	11323		116	5	6
	HF	11566		118	7	5

## LUMEN MAINTENANCE

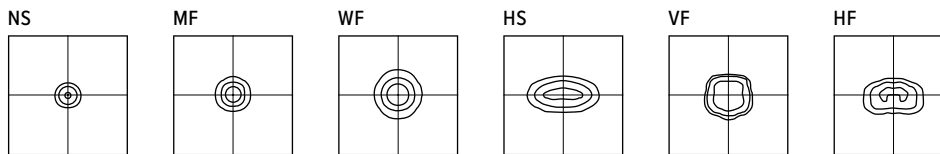
LUMEN PACKAGE	CCT	REPORTED L70 HOURS (TM-21)
L57	ALL	>60,000
L70		
L88		
L106	3000K	>46,000
	4000K & 5000K	>60,000

## MULTIPLIER TABLE

COLOR TEMPERATURE	
CCT	CONVERSION FACTOR
3000K	0.90
4000K	1.00
5000K	1.04

- Photometrics tested in accordance with IESNA LM-79. Results shown are at 25°C ambient temperature.
- Predicted lumen maintenance calculated from LED manufacturer IES LM-80 data and in-situ temperature measurement.
- Reported L70 hours in accordance with IES TM-21

## DISTRIBUTION DETAILS

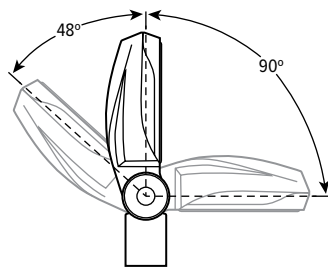


## FIXTURE DETAILS

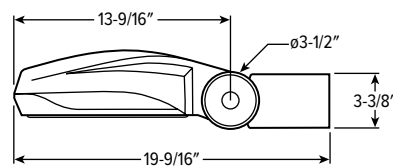
### FIXTURE ADJUSTMENT

Easily adjusts with locking teeth in 6° increments. (EPA: 1.00/Weight: 20 lbs)

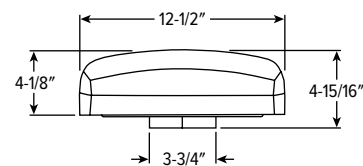
#### STRAIGHT ARM (SR)



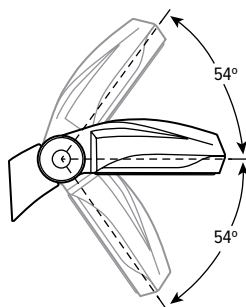
#### SIDE VIEW



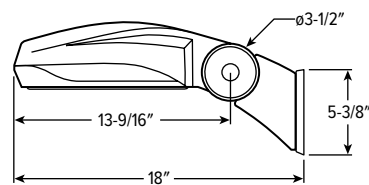
#### FRONT VIEW



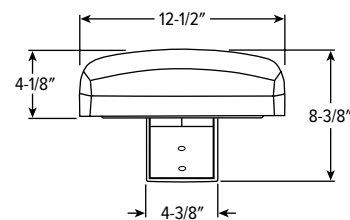
#### CURVED ARM (CU)



#### SIDE VIEW

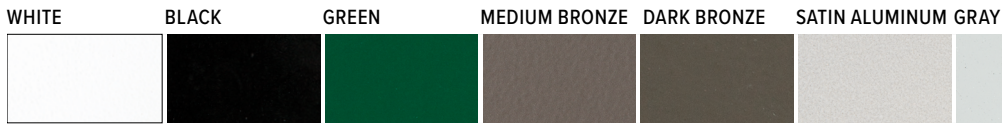


#### FRONT VIEW



# VF2<sup>LED</sup> Voltaire Architectural Flood Light – Medium

## FINISH OPTIONS



For custom color, please specify RAL code or a manufacturer code with description. All custom colors other than RAL require two sample swatches, minimum 1" square.

## OPTIONS DETAILS

### PC

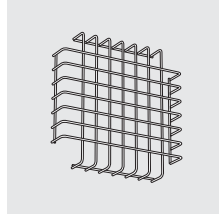


### WG



Fixture can accommodate only one face-mounted option.

### WG-VF2



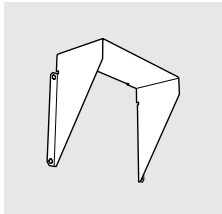
Includes (8) #6-32 screws and clips.  
EPA: 0.18/Weight: 0.69 lbs

### FVS



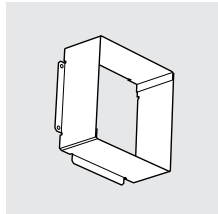
Fixture can accommodate only one face-mounted option.

### VF2CS-\_\_\_



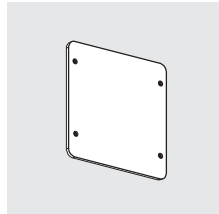
Includes (4) #6-32 screws.  
9-5/8" x 7-11/16" x 3-9/16"  
EPA: 0.42/Weight: 0.42 lbs

### VF2FS-\_\_\_



Includes (4) #6-32 screws.  
9-5/8" x 9-5/8" x 3-9/16"  
EPA: 0.42/Weight: 0.82 lbs

### VF2FVS

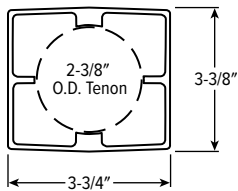


Includes (4) #6-32 screws and clips.  
EPA: 0.02/Weight: 0.60 lbs

## MOUNTING DETAILS

### STRAIGHT ARM (SR)

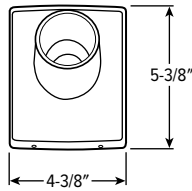
- Mounts horizontally or vertically to  $\varnothing 2"$  ( $\varnothing 2-3/8"$  O.D.) tenon.
- Up or down light applications.
- 360° rotation on mounting tenon.
- Additional mounting accessories available.



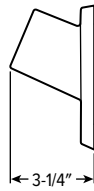
Fixture arm end view

### CURVED ARM (CU)

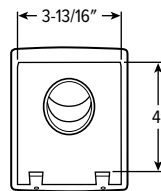
- Mounts to vertical surface or pole, downlight orientation only, using cast adapter and mounting plate provided.
- Must be anchored to adequate structure that can safely support fixture weight.



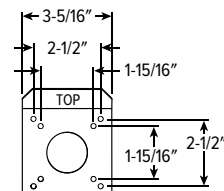
Adapter front view



Adapter Side View

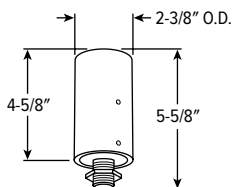


Adapter back view



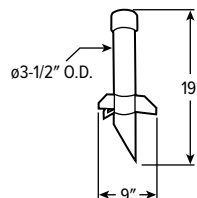
Mounting plate

### VF2TA



Threaded adapter: 1/2" NPS stainless steel threaded nipple with hex locknut on a cast aluminum anodized  $\varnothing 2-3/8"$  O.D. adapter  
EPA: 0.00/Weight: 0.61 lbs.

### STK



Ground stake: Molded black plastic with integral splice compartment and 1/2" NPS threaded entry point for fixture mounting (requires VF2TA option, left)



H.E. Williams, Inc.

Carthage, Missouri

www.hew.com

417-358-4065

Designed and Manufactured in the USA

REV.07/16/24.LA

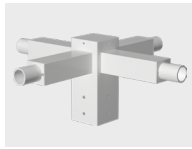
Flood Lights

Page 3 of 6

### TENON MOUNT ACCESSORY OPTIONS

NOTE: Tenons cannot be mounted in down orientation. Mounting accessories are for use with straight arm (SR) fixtures only.

#### TMHT

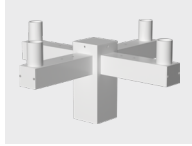


##### POLE TOP TENON - HORIZONTAL FIXTURE MOUNT

- Mounts on 2-3/8" - 3" pole top tenons
- Round or square to match pole shape
- Mounting configurations for one to four fixtures
- Center tenon option available

Example: VF2-TMHT-SQ-T238-S-DBZ

#### TMVT



##### POLE TOP TENON - VERTICAL FIXTURE MOUNT

- Mounts on 2-3/8" - 3" pole top tenons
- Round or square to match pole shape
- Vertical fixture tenons
- Mounting configurations for one to four fixtures
- Center tenon option available

Example: VF2-TMVT-SQ-T238-S-DBZ

#### HT



##### HORIZONTAL POLE TOP TENON

- Mounts on 2-3/8" - 3" pole top tenons
- Round or square to match pole shape
- Horizontal fixture tenons
- Mounting configurations for one to four fixtures
- Center tenon option available

Example: VF2-HT-SQ-T238-S-DBZ

#### VT

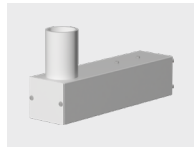


##### VERTICAL POLE TOP TENON

- Mounts on 2-3/8" - 3" pole top tenons
- Round or square to match pole shape
- Vertical fixture tenon

Example: VF2-VT-SQ-T238-DBZ

#### DMVT

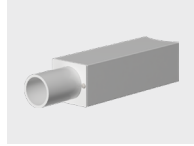


##### DIRECT MOUNT - VERTICAL FIXTURE

- Mounts to round or square poles
- Fixtures can be rotated 360° around tenon

Example: VF2-DMVT-SQ-S-DBZ

#### DMHT

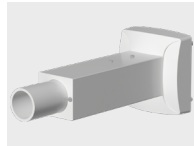


##### DIRECT MOUNT - HORIZONTAL FIXTURE

- Mounts to round or square poles

Example: VF2-DMHT-SQ-S-DBZ

#### WMHT

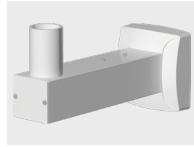


##### WALL MOUNT - HORIZONTAL FIXTURE

- Cast cover matches fixture aesthetics

Example: VF2-WMHT-DBZ

#### WMVT

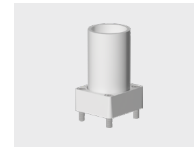


##### WALL MOUNT - VERTICAL FIXTURE

- Cast cover matches fixture aesthetics
- Fixtures can be rotated 360° around tenon

Example: VF2-WMVT-DBZ

#### SM



##### SURFACE MOUNT

- Mounts to any flat surface, with tenon in upward or horizontal orientation
- Fixtures can be rotated 360° around tenon

Example: VF2-SM-DBZ

#### ST



##### VERTICAL STANCHION MOUNT

- Profile matches VF1 and VF2 arms
- Stanchion arm base cover and fixture rotate 360° around base

Vertical fixture tenon

Example: VF2-ST-DBZ

#### STH



##### HORIZONTAL STANCHION MOUNT

- Profile matches VF1 and VF2 arms
- Stanchion arm base cover and fixture rotate 360° around base

Horizontal fixture tenon

Example: VF2-STH-DBZ

### ORDERING INFORMATION

EXAMPLE: VF2-TMVT-SQ-T238-S-DBZ-OPTIONS						
	SERIES	SIZE/SHAPE	TENON SIZE (BY OTHERS)	MOUNTING CONFIGURATION	FINISH OPTIONS	OPTIONS
TENON MOUNT	VF2-TMHT VF2-TMVT VF2-HT	SQ Square RD Round	T238 ø2-3/8" O.D. T278 ø2-7/8" O.D. T3 ø3" O.D.	S Single D90 Double @ 90° D180 Double @ 180° T90 Triple @ 90° T120 Triple @ 120° <sup>1</sup> Q90 Quad @ 90°		CT Center tenon
	VF2-VT	SQ Square RD Round	T238 ø2-3/8" O.D. T278 ø2-7/8" O.D. T3 ø3" O.D.		BLK Black DBZ Dark bronze DBR Medium bronze GRAY Standard gray SLV Satin aluminum WHT White	
DIRECT MOUNT	VF2-DMVT VF2-DMHT	SQ Square pole 3R 3" round pole 4R 4" round pole 5R 5" round pole		S Single D90 Double @ 90° D180 Double @ 180° T90 Triple @ 90° T120 Triple @ 120° <sup>1</sup> Q90 Quad @ 90°		
	VF2-WMHT VF2-WMVT VF2-SM VF2-ST VF2-STH					

<sup>1</sup> For RD option only



## LOAD DATA

MODEL NUMBER	ARM LENGTH <sup>1</sup>	MOUNTING CONFIGURATION	EPA <sup>2</sup>	WEIGHT
VF2-SM		-	0.06	1.24
VF2-ST	14"	-	1.03	5.86
VF2-DMHT-SQ VF2-DMHT-RD	12"	S	0.87	5.19
		D90		
		D180		
		T90		
		T120		
		Q90		
VF2-DMVT-SQ VF2-DMVT-RD	14"	S	0.99	5.35
		D90		
		D180		
		T90		
		T120		
		Q90		
VF2-WMHT	12"	-	1.25	8.1
VF2-WMVT	14"	-	1.34	7.36
VF2-TMHT-RD	12"	S	1.44	10.84
		D90	2.18	14.57
		D180	2.23	14.57
		T90	2.92	19.21
		T120	2.82	19.21
		Q90	3.62	23.85
VF2-TMVT-RD	14"	S	1.56	9.04
		D90	2.45	12.79
		D180	2.45	12.79
		T90	3.25	16.54
		T120	3.16	16.54
		Q90	4.07	20.29
VF2-TMHT-SQ	12"	S	1.41	11.84
		D90	2	16.48
		D180	2.01	16.48
		T90	2.56	21.12
		Q90	3.12	25.76
VF2-TMVT-SQ	14"	S	1.56	10.95
		D90	2.36	14.7
		D180	2.13	14.7
		T90	2.86	18.45
		Q90	3.41	22.2
VF2-VT-RD	-	-	0.69	6.00
VF2-VT-SQ	-	-	0.83	7.75
VF2-HT-RD	-	S	0.69	5.74
		D90		6.19
		D180		6.19
		T90		6.64
		T120		6.64
		Q90		7.09
VF2-HT-SQ	-	S	0.83	7.65
		D90		8.1
		D180		8.1
		T90		8.55
		Q90		9.0

<sup>1</sup> Maximum arm length cannot exceed 28.188" long in any configuration.

<sup>2</sup> EPA is calculated for mounting options only.



VF2 LED

Voltaire Architectural Flood Light – Medium

AVI-ON BLUETOOTH WIRELESS CONTROL DETAILS

FEATURES

Simple

- Gateway-free distributed control
- Factory pre-commissioning
- Contractor friendly installation
- Occupancy/vacancy/daylight sensing

Scalable

- Virtually unlimited network size
- Spans small areas to large garages
- Flexible control strategies

Secure

- Optional cloud connectivity
- UL IoT platinum security rating
- DLC 5.0 compliant

COMMISSIONING & INSTALLATION TOOLS

Avi-on mobile apps provide intuitive, quick installation and commissioning. Pro tools are available to qualified installers. Live commissioning training and on-site or remote support by Avi-on must be ordered separately through Avi-on.



Commissioning Mobile App



Zone Scanner Web App



Commissioning Pro App

ACCESSORIES

NETWORK	
AVI-RAB-LTE	Remote access bridge
AVI-KIT-NTM	Network time manager with battery backup

For load controllers and additional accessory info, see [hew.com/avi-on](http://hew.com/avi-on)

SYSTEM COMPONENTS



The Bluetooth® word mark and logos are registered trademarks owned by Bluetooth SIG, Inc. and any use of such marks by Avi-on is under license. Other trademarks and trade names are those of their respective owners.

