

CATALOG #: _____

TYPE: _____

PROJECT: _____



FEATURES

- Designed to illuminate sidewalks, entryways, perimeters or facades
- Intended for use in both uplight and downlight applications
- Optional tamper-resistant screws for vandal-prone areas
- Blends seamlessly with a variety of architectural styles
- Purposefully modeled to allow runoff of dirt and water for an always-clean appearance
- Available on QuickShip
- Made Right Here® in the USA

SPECIFICATIONS

- HOUSING** – Die-cast aluminum enclosure.
- THERMAL MANAGEMENT** – Integral die-cast aluminum heatsink and LED source provide passive thermal management. Rated ambient operating temperature -30°C to 50°C (L10, L17), -30°C to 45°C (L20).
- OPTICAL SYSTEM** – General output provides full cutoff.
- LED SOURCE** – ANSI 3000K, 4000K, or 5000K CCT; 70 or 80 CRI LEDs. L20: circuit board design. L10 & L17: Chip on board.
- LED DRIVER** – 0-10V dimming.
- ELECTRICAL** – 120-277 VAC input range; 50-60Hz; power factor >.90; THD <20% at full load. FCC Class A compliant. Quick-disconnect wiring provided. See fixture performance data for lumen maintenance.
- FINISH** – Super durable polyester powder coat bonded to phosphate-free, multi-stage pretreated metal, meets and exceeds AAMA 2604 specifications for outdoor durability.
- MOUNTING** – Surface mounts directly over a 4" maximum outlet box. Must be anchored to adequate structure that can safely support fixture weight (6.5 Lbs).
- LISTINGS** –
 - cCSAus certified as luminaire suitable for wet locations.
 - IDA Dark-Sky approved (downlight applications only).
 - RoHS compliant.
 - IP65 rated.
 - Title 24 compliant with PC option.
 - Complies with the Buy American Act and other federal regulations. Request certification at hew.com/baa.
- WARRANTY** – 5-year limited warranty, see hew.com/warranty.

ORDERING EXAMPLE: VWMH - L20/740 - T3 - DBZ - SDGL - OPTIONS - DIM - UNV

ORDERING INFO

SERIES	LUMENS ^[1]	CRI/CCT	DISTRIBUTION ^[2]	FINISH OPTIONS ^[3]
VWMH Horizontal	70 CRI	70 CRI	TL Lambertian distribution ^[5]	BLK Black (RAL #9004)
VWMV Vertical	L17 1,700lm ^[4]	730 3000K	T3 Type III ^[6]	DBZ Dark bronze
	L20 2,000lm	740 4000K		DBR Medium bronze
	80 CRI	750 5000K		GRAY Standard gray
	L10 1,000lm	80CRI		GRN Green (RAL #6005)
	L17 1,700lm	830 3000K		SLV Satin aluminum (RAL #9006)
		840 4000K		WHT White (RAL #9003)

SHIELDING

SDGL Micro-prismatic tempered glass lens
CGL Clear tempered glass lens

OPTIONS

PC Button-style photocell ^[7]
SP10 10kA/10kV surge protection
TP Tamper-resistant Torx head screws ^[8]

CONTROL

DIM Dimming driver prewired for 0-10V low voltage applications

VOLTAGE

120 120V
208 208V
277 277V
UNV 120-277V

ACCESSORIES

TPTX-25 TOOL Tamper-resistant tool for Torx head screws. ^[9]

QUICKSHIP

VWMH-L10/840-TL-DBZ-CGL-QS-DIM-UNV
VWMH-L17/840-TL-DBZ-CGL-QS-DIM-UNV

NOTES

- Lumen output based on 70 CRI/5000K CCT. Actual performance may vary +/-5%, see page 2 for FIXTURE PERFORMANCE DATA.
- See page 2 for DISTRIBUTION DETAILS.
- See page 3 for FINISH OPTIONS.
- Available with 750 CRI/CCT only.
- L10 & L17 only.
- L20 only.

- Factory-installed. 120V, 208V, or 277V only; must specify voltage. See page 3 for FIXTURE DETAILS. Left side when viewed from behind fixture.
- Silver finish only. Safety screws providing added support to the lens are not tamper-resistant (lens is sealed to the fixture via adhesion). Requires a tamper-resistant tool, see Accessories.
- Ordered separately. Please specify quantity required per project.



FIXTURE PERFORMANCE DATA

	LED PACKAGE	DISTRIBUTION	CRI	CCT	WATTAGE	CLEAR GLASS (CGL)		SOLITE GLASS (SDGL)		BUG RATINGS
						DELIVERED LUMENS	EFFICACY(lm/W)	DELIVERED LUMENS	EFFICACY (lm/W)	
VWMH	L10	TL	80	3000	13	1307	101	1297	100	B1-U0-G0
			80	4000		1375	106	1365	105	
			70	5000		1484	114	1473	113	
	L17		80	3000	16	1825	114	1811	113	
			80	4000		1921	120	1907	119	
			70	5000		2037	127	2022	126	
	L20	T3	70	3000	27	2864	106	2831	105	B1-U0-G1
			70	4000		2868	106	2834	105	
			70	5000		3050	113	3014	112	
VWMV	L10	TL	80	3000	13	1107	85	1105	85	B1-U0-G0
			80	4000		1165	90	1164	90	
			70	5000		1321	102	1320	102	
	L17		80	3000	16	1672	105	1670	104	
			80	4000		1760	110	1758	110	
			70	5000		1864	117	1862	116	
	L20	T3	70	3000	26	2524	97	2486	96	B1-U0-G1
			70	4000		2702	104	2661	102	
			70	5000		2721	105	2680	103	

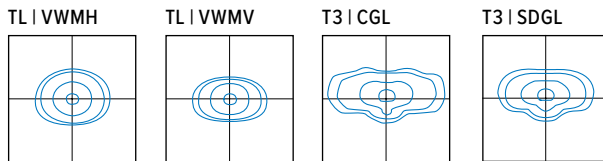
- Photometrics tested in accordance with IESNA LM-79. Results based on 70 CRI/5000K CCT, average wattage for 120V through 277V input, and 25°C ambient temperature. Actual performance may vary +/-5%.
- Reported L70 hours in accordance with IES TM-21.

- ¹ Predicted lumen maintenance calculated from LED manufacturer IES LM-80 data and in-situ temperature measurement.

LUMEN MAINTENANCE ^[1]

	AMBIENT TEMP.	REPORTED L70 HOURS (TM-21)
L20	25°C	>60,000
	35°C	>60,000
	45°C	>60,000
L10/L17	25°C	>55,000
	35°C	>55,000
	45°C	>55,000

DISTRIBUTION DETAILS

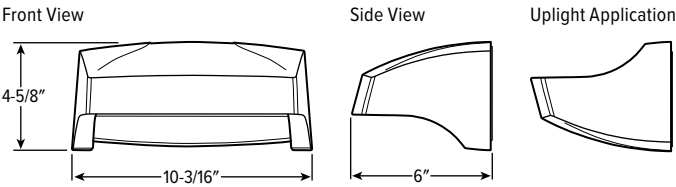
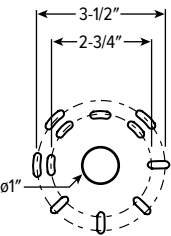


SEE NEXT PAGE FOR FIXTURE DETAILS

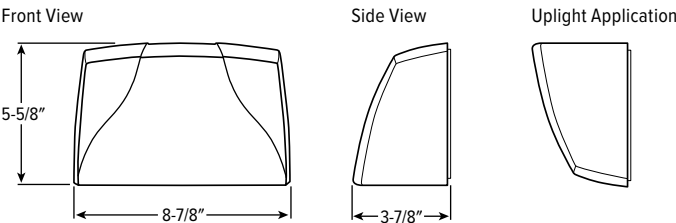
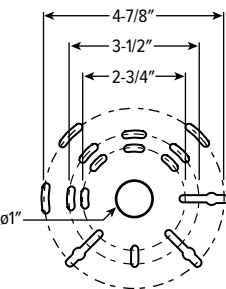


FIXTURE DETAILS

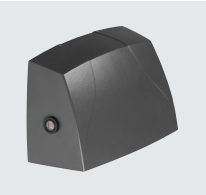
VWMH Weight: 6.5 lbs
Mounting Bolt Pattern



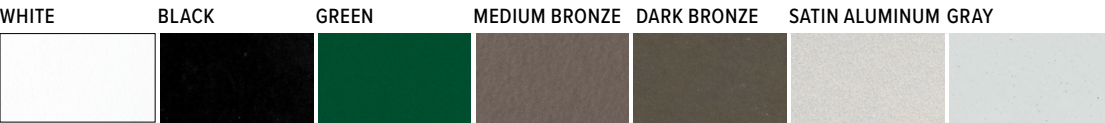
VWMV Weight: 6.5 Lbs
Mounting Bolt Pattern



PC OPTION



FINISH OPTIONS



For custom color, please specify RAL code or a manufacturer code with description. All custom colors other than RAL require two sample swatches, minimum 1" square.