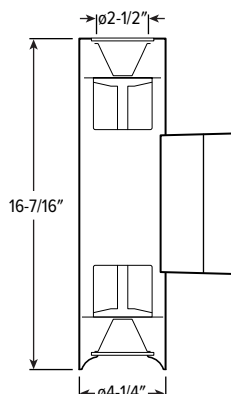


W4CRDI LED

4" Wet Location Direct/Indirect Cylinder – Round



CATALOG #: _____

TYPE: _____

PROJECT: _____



FEATURES

- Direct and indirect light combine to brighten canopies and softly accent vertical surfaces
- Sleek architectural form delivers refined, high-performance outdoor illumination
- Slim profile enables precise light control, highlighting facades and design details
- Durable aluminum housing and die-cast trim engineered for year-round exposure
- Sealed IP-rated design guards internal components from water, dust, and debris
- Beam angles ranging from 21° spot to 56° wide for tailored performance
- Pairs with Williams indoor cylinders for seamless exterior-to-interior continuity
- Maximize energy savings with efficacies up to 126 lm/W
- Made Right Here® in the USA

SPECIFICATIONS

- HOUSING** – Extruded aluminum with die-cast aluminum accent ring.
- FINISH** – Super durable polyester powder coat bonded to phosphate-free, multi-stage pretreated metal, meets and exceeds AAMA 2604 specifications for outdoor durability. Salt spray tested, 3,000 hours (ASTM B117).
- TRIM** – Die-cast aluminum frame with micro-prismatic, glass lens.
- ELECTRICAL** – High-performance Class 2 C.O.B. LED array. Modular quick-connect plug for easy field-connection of LED light assembly to driver. Estimated L70>105,000 hours. 50/60 Hz, THD <10%. Rated -10°C to 40°C ambient operating temperature. 0°C to 40°C with EM battery.
- MOUNTING** – Wall mount.
- LISTINGS** –
 - cCSAus conforms to UL STD 1598 and UL STD 8750. Certified to CAN/CSA STD C22.2 No. 250.2-20. Suitable for wet locations.
 - ANSI/UL Standard 2108
 - IP66 rated.
 - Complies with the Buy American Act and other federal regulations. Request certification at hew.com/buy-american
- WARRANTY** – 5-year limited warranty, see hew.com/warranty

ORDERING EXAMPLE: W4CRDI - 16 - L15/835U/L15/835D - OPTIONS - WHT - DIM - UNV - W - WM

SERIES **HEIGHT** **LUMEN PACKAGE (Example: L15/835U/L15/835D)**

W4CRDI **16** 16" Specify lumen packages: **U** for Up and **D** for Down

LUMENS ^[1]	CRI	CCT	U OR D
L10 1,000lm	8 80	27 2700K	U Uplight
L15 1,500lm	9 90	30 3000K	D Downlight
		35 3500K	
		40 4000K	
		50 5000K	

OPTIONS ^[2]

EM/7W	7-watt emergency battery ^[4]
EM/10WRM/IPRTS	Remote mount 10-watt emergency battery with IP65 rated regressed test switch ^[5]
RDB	Remote mount control/driver box, galvanized steel ^[6]
PC	Factory-installed button-style photocell ^[7]
(L___)	Additional lower lumen packages available ^[8] Example: 1,200 lumens = W4CRDI-16-L15/835-(L12)

HOUSING FINISH ^[3]

BLK	Black (RAL #9004)
DBZ	Dark bronze
DBR	Medium bronze
GRAY	Standard gray
GRN	Green (RAL #6005)
SLV	Satin aluminum (RAL #9006)
WHT	White (RAL #9003)

DRIVER

See page 2 for **ADDITIONAL DRIVER OPTIONS**.
DIM Dimming driver, 0-10V
DIM1 1% Dimming driver, 0-10V

VOLTAGE

UNV 120-277V
347 347V ^[9]

DISTRIBUTION

Uplight
W 56° Wide
M 40° Medium
N 30° Narrow
S 21° Spot

Downlight
W 56° Wide
M 40° Medium
N 30° Narrow
S 21° Spot

MOUNTING

WM Wall mount to recessed J-box ^[10]

NOTES

- Lumen output based on W Distribution and 80 CRI/3500K CCT. Actual performance may vary +/-5%. See page 2 for **FIXTURE PERFORMANCE DATA**.
- See page 2 for **EMERGENCY BATTERY DETAILS**. All EM batteries are California Energy Commission (CEC) Compliant.
- See page 3 for **HOUSING FINISH DETAILS**.
- Only available with L15 lumen package and DIM, DIM1 or DIM LINE Drivers.

- Max remote distance 50', including suspension length. Large remote box provided.
- Painted driver box available, specify RDB/BLK or RDB/WHT.
- Not available with 347V or EM batteries.
- Specify in increments of 100 nominal lumens. Option must be specified with next higher lumen package.
- Not available with EM batteries or DMX drivers.
- 4" square galvanized J-box, by others. See page 3 for **MOUNTING DETAILS**.



W4CRDI LED

4" Wet Location Direct/Indirect Cylinder – Round

FIXTURE PERFORMANCE DATA

Find your lumen stops for both uplight and downlight on the table below and add the wattages together to find the total fixture wattage.

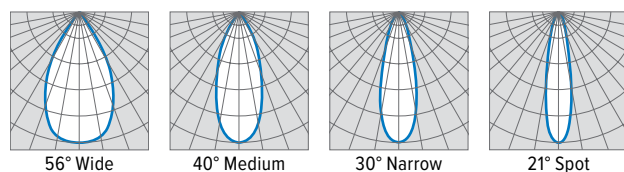
DOWNLIGHT OR UPLIGHT				
	DISTRIBUTION	DELIVERED LUMENS	WATTAGE	EFFICACY (lm/W)
L10	W	1061	9.8	108
	M	1043	9.8	106
	N	1106	9.8	113
	S	1161	9.8	118
L15	W	1564	13.6	115
	M	1538	13.6	113
	N	1630	13.6	120
	S	1712	13.6	126

MULTIPLIER TABLE

COLOR TEMPERATURE		
	CCT	CONVERSION FACTOR
80 CRI	2700K	0.98
	3000K	1.00
	3500K	1.00
	4000K	1.01
	5000K	0.99
90 CRI	2700K	0.93
	3000K	0.95
	3500K	0.96
	4000K	0.97
	5000K	0.94

- Photometrics tested in accordance with IESNA LM-79. Results based on W Distribution and 80 CRI/3500K CCT, average wattage for 120V input, and 25°C ambient temperature. Actual performance may vary +/-5%.
- To calculate lumen output in emergency mode, multiply the battery wattage by the efficacy.
- Use multiplier table to calculate additional options.

DISTRIBUTION CURVES

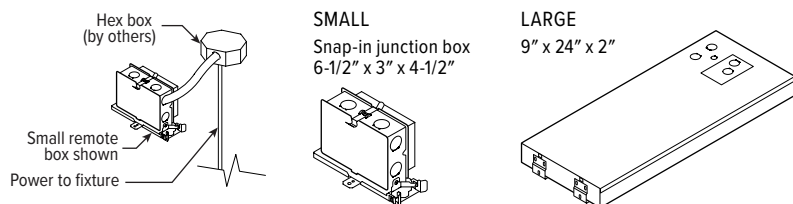


ADDITIONAL DRIVER OPTIONS

CONTROL/DRIVER	DESCRIPTION	RDB DETAILS BY LUMEN STOP		
		L10	L15	10W EM
DIM	Dimming driver prewired for 0-10V low voltage applications; entire fixture switches and dims together	OIS	OIS	RIL
DIMU/DIMD	Dimming driver prewired for 0-10V low voltage applications; up and down portions switch and dim separately	OIS	OIS	RIL
DIM1	1% dimming driver prewired for 0-10V low voltage applications	OIS	OIS	RIL
DIM1U/DIM1D	1% dimming driver prewired for 0-10V low voltage applications; up and down portions switch separately	OIS	OIS	RIL
DIM LINE	Line voltage dimming driver (TRIAC and ELV compatible, 120V only)	—	OIS	RIL
DIM LINEU/DIM LINED	Line voltage switching and line voltage dimming; up and down portions switch separately	—	OIS	RIL
DMX	0.1% dimming driver for DMX controls	RIL	RIL	RIL
DMX/DMX	0.1% dimming driver for DMX controls; up and down portions switch separately	RIL	RIL	RIL
DALI	DALI dimming driver	RIL	RIL	RIL
DALI/DALI	DALI dimming driver; up and down portions switch separately	RIL	RIL	RIL
LDE1	Lutron Hi-lume 1% EcoSystem dimming LED driver	RIL	RIL	RIL
LDE1/LDE1	Lutron Hi-lume 1% EcoSystem dimming LED driver; up and down portions switch separately	RIL	RIL	RIL

REMOTE MOUNT DETAILS

Max remote distance is 50', connection by others. Must be mounted in dry/damp location and room-side accessible for maintenance.



REMOTE MOUNT KEY

OIS	RDB Optional, Small Box
RIL	RDB Required, Large box

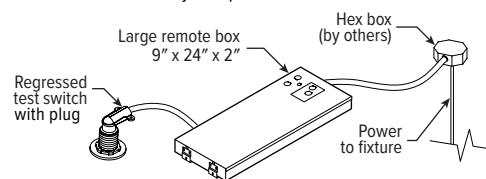
EMERGENCY BATTERY DETAILS

REMOTE MOUNT

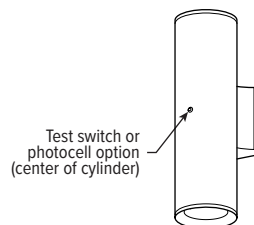


Regressed test switch
ø1-3/4"

Max remote distance is 50', connection by others. Must be mounted in dry/damp location.



INTEGRAL



W4CRDI

LED

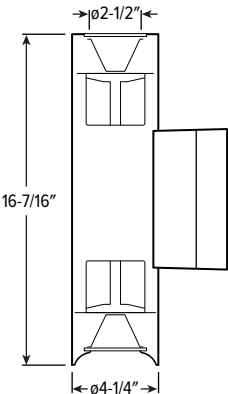
4" Wet Location Direct/Indirect Cylinder – Round

HOUSING FINISH DETAILS

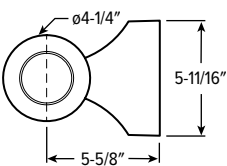
WHITE	BLACK	GREEN	MEDIUM BRONZE	DARK BRONZE	SATIN ALUMINUM GRAY	For custom color, please specify RAL code or a manufacturer code with description. All custom colors other than RAL require four sample swatches, minimum 1" square.
						

MOUNTING DETAILS

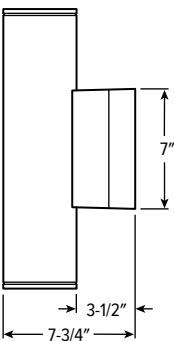
CROSS SECTION



TOP VIEW



SIDE VIEW



WALL MOUNT ADAPTOR

