

CATALOG #: _____

TYPE: _____

PROJECT: _____



FEATURES

- Fully accessible without the use of tools
- Pull switch and grounded convenience outlet options available
- Low-voltage controller and pull cord options provide patients with bedside lighting control
- Contoured architectural housing with die-cast aluminum end caps
- Keyhole mounting for easy installation
- Supplied with both Philips and tamper-resistant tri-groove screws for additional security
- Anti-microbial finish option suppresses the spread of dangerous micro-organisms, mold, and bacterial growth
- Wireless in-fixture control solutions available
- Made Right Here® in the USA

SPECIFICATIONS

- **HOUSING** – 20-gauge C.R.S. fixture channel. Front housing constructed of marine grade extruded aluminum with die-cast aluminum end caps.
- **REFLECTIVE SURFACES** – 92% minimum average reflective white polyester powder coat on interior steel components.
- **SHIELDING** – Frosted acrylic, .125" thick.
- **FINISH** – Textured matte white polyester TGIC powder coat bonded to phosphate-free, multi-stage pretreated metal. All parts painted after fabrication to facilitate installation, increase efficiency, and inhibit corrosion.
- **ELECTRICAL** – High-quality mid-power LED board. L70 at 50,000 hours. 25°C maximum ambient operating temperature. 50/60 Hz constant current driver.
- **MOUNTING** – Wall.
- **LISTINGS** –
 - cETLus conforms to UL STD 1598 and UL STD 8750. Certified to CAN/CSA STD C22.2 No. 250.0. Suitable for damp locations.
 - Build America, Buy America (BABA) and Buy American Act (BAA) compliant. Request certification at hew.com/buy-american
- **WARRANTY** – 5-year limited warranty, see hew.com/warranty

ORDERING EXAMPLE: WMAUD - 4 - L40/835U/L40/835D - AF - OPTIONS - CONTROL/DIMU/DIMD - UNV

ORDERING INFO

SERIES	LENGTH	LUMEN PACKAGE (EXAMPLE: L40/835U/L40/835D)				SHIELDING
WMAUD	2 2'	Specify lumen packages: U for Uplight and D for Downlight				AF Frosted acrylic, .125" thick
	3 3'	LUMENS ^[1]	CRI	CCT	U OR D	
	4 4'	2'	8 80	27 2700K	U Uplight	
		L20 2,000lm	9 90	30 3000K	D Downlight	
		L33 3,300lm		35 3500K		
		3'		40 4000K		
		L30 3,000lm		50 5000K		
		L49 4,900lm				
		4'				
		L40 4,000lm				
		L65 6,500lm				

OPTIONS ^[2]

See page 3 for FINISH OPTIONS. See page 3 for LOW-VOLTAGE CONTROL RELAY FOR PATIENT ROOMS OPTIONS.

EM/10W	10-watt emergency battery ^[4]
EM/10WRM	Remote mount 10-watt emergency battery
EM/10WRM/RTS	Remote mount 10-watt emergency battery with regressed test switch
PSBR/120	Single-circuit bottom-mounted pull switch on right ^[5]
PSBL/120	Single-circuit bottom-mounted pull switch on left ^[6]
PS2BR/120	Two-circuit, 4-position bottom-mounted pull switch on right ^[7]
PS2BL/120	Two-circuit, 4-position bottom-mounted pull switch on left ^[8]
APCW	Anti-microbial white pull cord ^[9]
GCOL	Grounded convenience outlet on left ^[10]
GCOR	Grounded convenience outlet on right ^[11]
AMW	Anti-microbial white finish

CONTROL ^[3]

See page 4 for ADDITIONAL CONTROL OPTIONS.

–	None
AVI-LVFA	Avi-on wireless fixture control ^[12]
AWNRR	Lutron Athena wireless node integral fixture control, RF only ^[13]

DRIVER

See page 3 for ADDITIONAL DRIVER OPTIONS.

DIMU/DIMD	Driver with external 0-10V dimming wires. Up and down switch and dim separately
DRVU/DRVD	Driver without external dimming wires. Up and down switch separately
DA-U/D	Driver with 12V auxiliary power, without external dimming wires. Up and down switch separately. ^[14]
DSR-U/D	Sensor-ready driver without external dimming wires (D4i-DALI-2). Up and down switch separately

VOLTAGE

120	120V
277	277V
UNV	120-277V
347	347V ^[15]

ACCESSORIES

TPTG TOOL Tamper-resistant tool for tri-groove screws. ^[16]

NOTES

- Lumen output based on 80 CRI/3500K CCT. Actual performance may vary +/-5%, see page 2 for FIXTURE PERFORMANCE DATA.
- Remote EM batteries: max remote distance 50'. Large remote box provided. Specify CEC in the option code when California Energy Commission regulations are required. See page 2 for REMOTE MOUNT BATTERY DETAILS.
- See page 3 for SENSOR & NODE PLACEMENT DETAILS. See page 4 for AVI-ON BLUETOOTH WIRELESS CONTROL DETAILS.
- 4' only.
- Operates downlight, 120V only.
- Operates downlight, 120V only.
- 120V only.
- 120V only.
- Packaged with fixture, field installed. Requires PSB_ or PS2B_ Options.
- 120V only.
- 120V only.
- DA Driver only.
- DA and DSR Drivers only.
- Avi-on and Lutron Athena Controls only.
- Not available with EM batteries, low-voltage controllers, DA or DSR drivers.
- Tamper-resistant tool must be ordered separately for use with tamper-resistant screws. Please specify quantity required per project.



FIXTURE PERFORMANCE DATA

	LED PACKAGE	DELIVERED LUMENS			TOTAL WATTAGE	EFFICACY (lm/W)	LUMEN MAINTENANCE ^[1]			
		UP	DOWN	TOTAL			L70	L80	L85	L90
2'	L20/835U/L20/835D	1934	1934	3868	32.6	119	>72,000	62,000	45,000	29,000
	L33/838U/L33/835D	3391	3391	6782	53.3	127	>72,000	>72,000	63,000	42,000
3'	L30/835U/L30/835D	3087	3087	6174	46.6	132	>72,000	>72,000	63,000	42,000
	L49/835U/L49/835D	4922	4922	9844	78.2	126	>72,000	>72,000	63,000	42,000
4'	L40/835U/L40/835D	4020	4020	8040	64.8	124	>72,000	62,000	45,000	29,000
	L65/835U/L65/835D	6566	6566	13132	102.2	128	>72,000	>72,000	63,000	42,000

- Photometrics tested in accordance with IESNA LM-79. Results based on 80 CRI/3500K CCT, average wattage for 120V through 277V input, and 25°C ambient temperature. Actual performance may vary +/-5%.
- To calculate lumen output in emergency mode, multiply the battery wattage by the efficacy.
- Use multiplier table to calculate additional options.

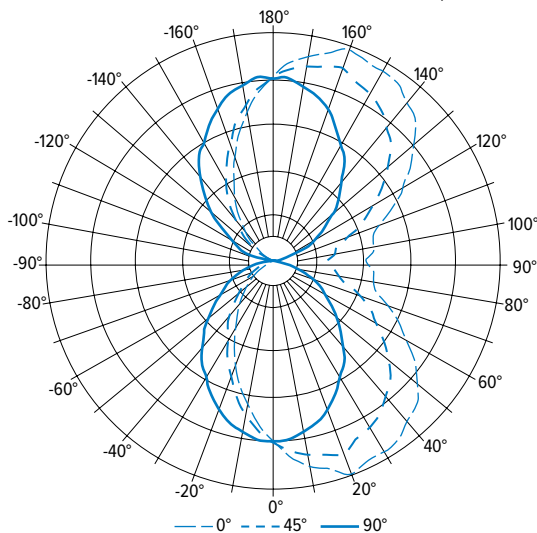
¹ Predicted lumen maintenance calculated in accordance with IES TM-21 per Energy Star (R) TM-21 Calculator rev. 02.08.16.

MULTIPLIER TABLE

	COLOR TEMPERATURE	
	CCT	CONVERSION FACTOR
80 CRI	2700K	0.97
	3000K	0.99
	3500K	1.00
	4000K	1.03
	5000K	1.06
90 CRI	2700K	0.80
	3000K	0.82
	3500K	0.83
	4000K	0.86
	5000K	0.89

PHOTOMETRY

WMAUD-4-L40/835U/L40/835D-AF Total Luminaire Output: 8040 lumens; 64.8 Watts | Efficacy: 124.1 lm/W | 80 CRI; 3500K CCT



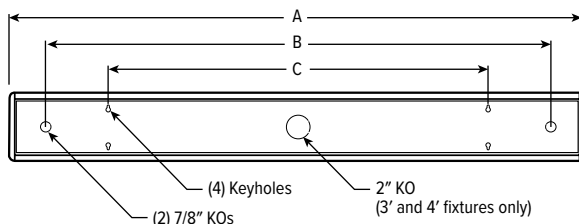
VERTICAL ANGLE	HORIZONTAL ANGLE					ZONAL LUMENS
	0°	45°	90°	135°	180°	
0	1440	1440	1440	1440	1440	
5	1572	1522	1431	1364	1321	136
15	1709	1592	1337	1127	1035	383
25	1762	1572	1175	861	739	561
35	1741	1494	995	629	500	657
45	1622	1329	765	395	281	661
55	1364	1073	547	218	124	580
65	1099	833	358	83	22	455
75	841	558	179	6	11	321
85	810	486	41	21	41	264
90	739	445	0	39	57	266
95	805	490	44	30	49	
105	836	566	182	6	11	322
115	1092	838	359	80	20	454
125	1353	1081	557	221	124	580
135	1601	1329	771	395	281	661
145	1726	1494	1012	633	504	659
155	1749	1569	1190	864	742	561
165	1704	1593	1357	1129	1040	384
175	1569	1525	1455	1372	1329	137
180	1444	1444	1444	1444	1444	

LUMEN SUMMARY	ZONE	LUMENS	% FIXTURE
	0 - 30	1080	13
	0 - 40	1737	22
	0 - 60	2977	37
	0 - 90	4017	50
	90 - 120	1042	13
	90 - 150	2941	37
	90 - 180	4023	50
	0 - 180	8040	100

FIXTURE DETAILS

See hew.com/power-entry for power entry details.

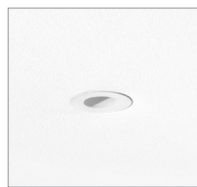
BACKVIEW



	DIMENSIONS		
	ACTUAL LENGTH (A)	7/8" KOS (B)	MOUNTING LENGTH (C)
2'	25-1/8" O.C.	20-1/2" O.C.	16" O.C.
3'	37-1/8" O.C.	32-1/2" O.C.	32" O.C.
4'	49-1/8" O.C.	42-1/2" O.C.	32" O.C.

REMOTE MOUNT BATTERY DETAILS

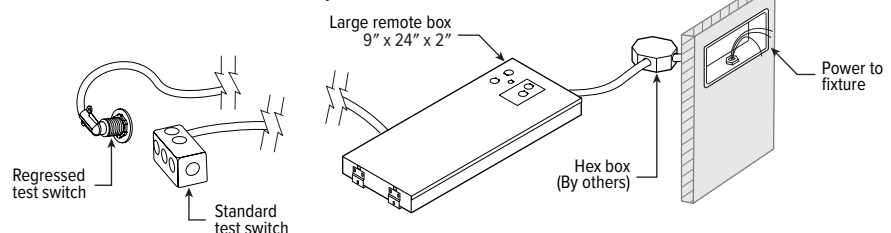
EM/10WRM/RTS



EM/10WRM

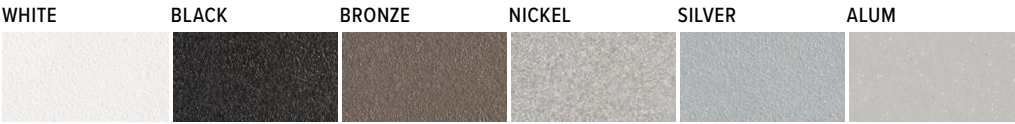


Max remote distance is 50', connection by others.



WMAUD^{LED} Architectural Wall Mount Up/Down

FINISH OPTIONS



For custom color, please specify RAL code or a manufacturer code with description. All custom colors other than RAL require four sample swatches, minimum 1" square.

LOW-VOLTAGE CONTROL RELAY FOR PATIENT ROOMS OPTIONS

120V-277V only. LVC wall plate accessories available, see hew.com/LVCWP for details.

EXAMPLE: LVC2U/D				
CONTROLLER	FUNCTION			
	LOAD 1		LOAD 2	
LVC1 1-circuit	U	Up		
	D	Down		
LVC2 2-circuit	U/	Up	D	Down
LVC3 Dimming control	DIMU	0-10V dimming for Uplight	/D	Down
			/DIMD	0-10V dimming for Downlight
	DIMD	0-10V dimming for Downlight	/U	Up
			/DIMU	0-10V dimming for Uplight
	SEQU	Up and down sequentially switched		

ADDITIONAL DRIVER OPTIONS

Specify drivers: **U** for Uplight and **D** for Downlight. Example: DIMU/DIMD

Note: Lumen restrictions apply, consult product builder at hew.com/product-builder

CATALOG NUMBER	DESCRIPTION
DRV	Driver without external dimming wires prewired for non-dimming applications
DIM	Driver with external dimming wires prewired for 0-10V low voltage applications
DIM1	1% driver with external dimming wires prewired for 0-10V low voltage applications
DIM LINE	Line voltage dimming driver (TRIAC and ELV compatible, 120V only)
DIM TRC	Line voltage dimming driver (TRIAC compatible, 120V only)
DA	Driver with 12V auxiliary power, without external dimming wires
SD40	40% step-dimming driver
SD50	50% step-dimming driver
DALI	DALI dimming driver
LDE1	Lutron Hi-lume 1% EcoSystem dimming driver

SENSOR & NODE PLACEMENT DETAILS



SEE NEXT PAGE FOR CONTROL DETAILS



AVI-ON BLUETOOTH WIRELESS CONTROL DETAILS

FEATURES

Simple

- Gateway-free distributed control
- Contractor friendly installation
- Occupancy/vacancy/daylight sensing

Scalable

- Virtually unlimited network size
- Spans small offices to large warehouses
- Flexible control strategies

Secure

- Optional cloud connectivity
- UL IoT platinum security rating
- DLC 5.0 compliant

COMMISSIONING & INSTALLATION TOOLS

Avi-on mobile apps provide intuitive, quick installation and commissioning. Pro tools are available to qualified installers. Live commissioning training and on-site or remote support by Avi-on must be ordered separately through Avi-on.



Commissioning
Mobile App

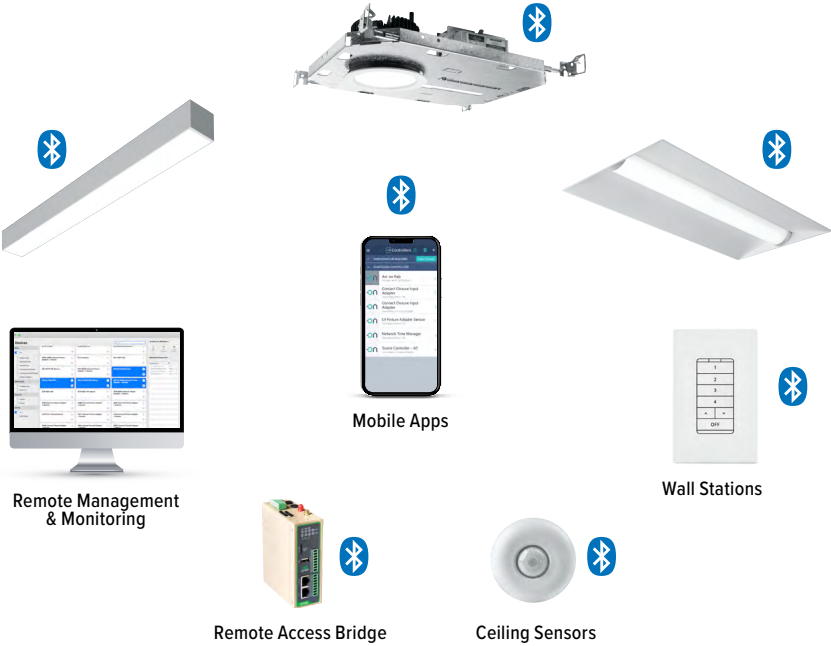


Zone Scanner
Web App



Commissioning
Pro App

SYSTEM COMPONENTS



The Bluetooth® word mark and logos are registered trademarks owned by Bluetooth SIG, Inc. and any use of such marks by Avi-on is under license. Other trademarks and trade names are those of their respective owners.

ACCESSORIES

WALL STATIONS	
AVI-B-2401AC-1	Scene controller - buttons numbered 1-4 and up/down/off, 120-277VAC
AVI-B-2402BAT-1	Scene controller - buttons numbered 1-4 and up/down/off, battery powered
AVI-B-2401AC-2	Dimmer with presets - buttons with percentages and up/down/off, 120-277VAC
AVI-B-2402BAT-2	Dimmer with presets - buttons with percentages and up/down/off, battery powered
AVI-B-2401AC-3	Two button control on/off or hold to dim up/down, 120-277VAC
AVI-B-2402BAT-3	Two button control on/off or hold to dim up/down, battery powered

NETWORK	
AVI-RAB-LTE	Remote access bridge
AVI-NTM	Network time manager with battery backup
CEILING MOUNT SENSORS	
AVI-KIT-SEN-DUCM	PIR motion and ultrasonic sensor kit
AVI-KIT-SEN-ICM	PIR motion and photocell sensor kit

For load controllers and additional accessory info, see hew.com/avi-on

ADDITIONAL CONTROL OPTIONS

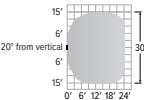
Operates downlight only. LVC and sensor option cannot be used simultaneously on 2' and 3' units.

OCCWS-FS-505-PP-___ Wattstopper low voltage ultrasonic motion sensor with power pack. Must specify voltage: 120, 277, or 347V.

SPECIFICATIONS	
TYPE	Ultrasonic Motion
MOUNTING HEIGHT	8' – 10'
DETECTION ANGLE	360°
TEMPERATURE RANGE	0° to 55°C
RELATIVE HUMIDITY	5 to 95%, non-condensing

SENSOR COVERAGE PATTERN

8' height: ø27' coverage
20° from vertical



SENSOR DETAIL

