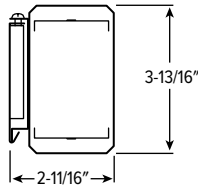
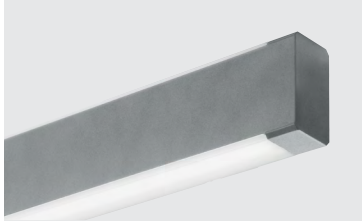


AX2WUD LED

2" Wall Mount Architectural Up/Down



CATALOG #: _____

TYPE: _____

PROJECT: _____

FEATURES

- Sleek, linear, ADA Compliant design incorporates clean lines and slim styling
- Slightly wrapped lens creates glowing edge and smooth illumination
- Attractive source of direct and indirect lighting for use in offices, hallways, conference rooms and medical facilities
- Made Right Here® in the USA

SPECIFICATIONS

- HOUSING – Extruded aluminum.
- SHIELDING – Frosted acrylic lens.
- FINISH – Matte, smooth silver sparkle standard. All other colors default to textured finish. Polyester powder coat bonded to phosphate-free, multi-stage pretreated metal. All parts painted after fabrication to facilitate installation, increase efficiency, and inhibit corrosion.
- ELECTRICAL – High quality mid-power LED boards. L70 at 60,000 hours per IES TM-21.
- MOUNTING – Wall.
- LISTINGS –
 - cETLus conforms to UL STD 1598 and UL STD 8750. Certified to CAN/CSA STD C22.2 No. 250.0. Suitable for damp locations.
 - ADA Compliant
- WARRANTY – 5-year limited warranty, see hew.com/warranty.

ORDERING EXAMPLE: AX2WUD - 4 - L33/835U/L33/835D - S - OPTIONS - DIM - UNV

ORDERING INFO

SERIES	LENGTH	LUMEN PACKAGE (EXAMPLE: L33/835U/L33/835D)				FIXTURE TYPE
AX2WUD	4 4'	Specify lumen packages: U for Uplight and D for Downlight				F Electrical feeder unit ^[1]
	8 8'	LUMENS ^[4]	CRI	CCT	U or D	J Joiner unit ^[2]
	4'	4	8 80	27 2700K	U Uplight	S Stand-alone unit ^[3]
		L16 1,600lm	9 90 ^[5]	30 3000K	D Downlight	
		L24 2,400lm		35 3500K		
		L33 3,300lm		40 4000K		
	8'			50 5000K		
		L33 3,300lm				
		L50 5,000lm				
		L66 6,600lm				

OPTIONS ^[6]

EM/10WRM	Remote mount 10-watt emergency battery
C2_	Two-circuit quick-connect wiring harness. ^[8]
(L__)	Additional lower lumen packages available. ^[9] Example: 3,000 nominal lumens = AX2WUD-4-L33/835U/L33/835D-S-(L30)

CONTROL ^[7]

DIM	Entire fixture switches and dims together
DRV	Non dimming, entire fixture switches together

VOLTAGE

120	120V
277	277V
UNV	120-277V

NOTES

- ¹ Quick-connect wiring harness, two end plates, field installed.
- ² Quick-connect wiring harness, no end plates
- ³ Two end plates installed
- ⁴ Lumens based on 3500 CCT. Actual lumens may vary +/-5%, additional lumen packages available, see options.
- ⁵ Extended lead times may apply. Consult factory for availability.
- ⁶ See page 3 for FINISH OPTIONS.
- ⁷ Not available with DIMU/DIMD. See page 2 for ADDITIONAL CONTROL OPTIONS.
- ⁸ See page 3 for QUICK CONNECT OPTIONS.
- ⁹ Specify in increments of 100 nominal lumens. Option must be specified with next higher lumen package.

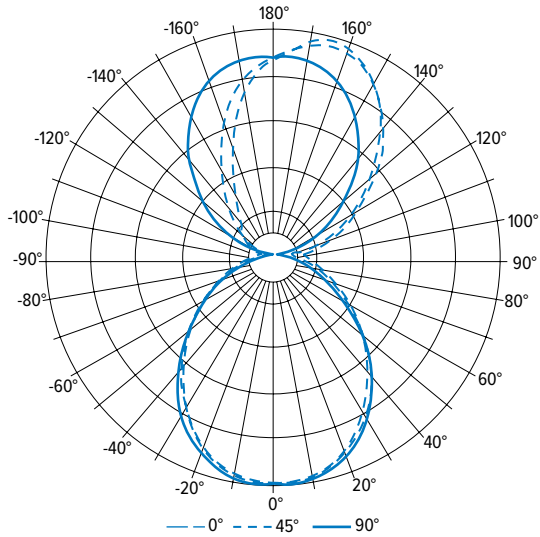


AX2WUD LED

2" Wall Mount Architectural Up/Down

PHOTOMETRY

AX2WUD-4-L33/835U/L33/835D-S-ASY-DIMU/DIMD-UNV Report #: 18756.0; 03/18/15 | Total Luminaire Output: 5789 lumens; 82.8 Watts | Efficacy: 69.9 lm/W | 84.5 CRI; 3514K CCT

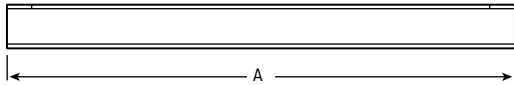


VERTICAL ANGLE	HORIZONTAL ANGLE					ZONAL LUMENS
	0°	45°	90°	135°	180°	
0	1251	1251	1251	1251	1251	
5	1250	1252	1257	1235	1251	119
15	1187	1195	1206	1185	1188	336
25	1056	1068	1096	1054	1048	494
35	872	916	921	881	863	559
45	695	700	706	680	661	524
55	509	501	477	472	474	431
65	363	344	283	300	315	311
75	244	209	120	162	192	188
85	169	105	16	60	82	87
90	160	94	0	37	61	
95	219	156	38	58	94	113
105	333	280	142	104	131	199
115	483	442	277	165	170	295
125	651	616	454	234	213	393
135	844	802	623	344	258	457
145	1000	1002	803	479	348	473
155	1146	1133	947	666	529	420
165	1199	1173	1043	870	767	290
175	1104	1105	1077	1026	986	102
180	1067	1067	1067	1067	1067	

LUMEN SUMMARY	ZONE	LUMENS	% FIXTURE
	0 - 30	949	16
	0 - 40	1508	26
	0 - 60	2463	43
	0 - 90	3048	53
	90 - 120	606	11
	90 - 150	999	17
	90 - 180	1929	33
	0 - 180	5789	100

MOUNTING DETAILS

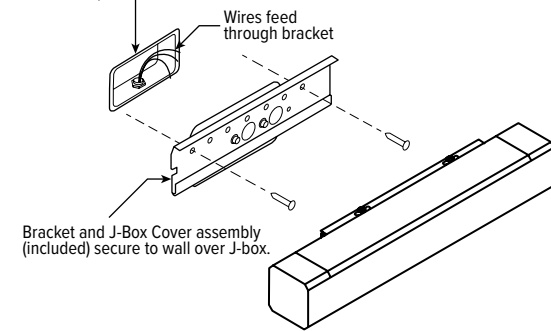
SIDE VIEW



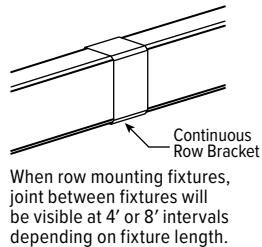
NOMINAL LENGTH	ACTUAL LENGTH (A)
4'	48-1/16"
8'	91-1/8"

MOUNTING

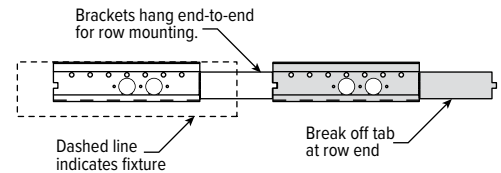
J-Box (not provided) mounted **horizontally** (if attaching to existing vertical J-box, J-box cover will be partially visible below fixture).



CONTINUOUS ROW FIXTURES



ROW MOUNTING



ADDITIONAL CONTROL OPTIONS

Note: Lumen restrictions apply, consult product builder at hew.com/product-builder.

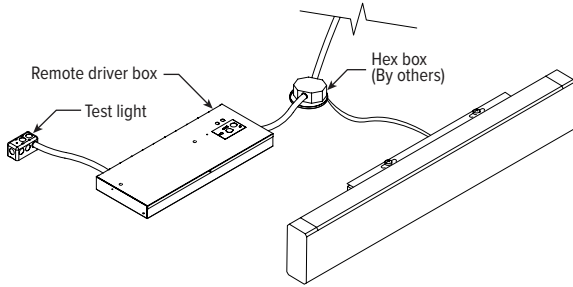
CATALOG NUMBER	DESCRIPTION
DRV	Driver prewired for non-dimming applications; entire fixture switches together
DIM	Dimming driver prewired for 0-10V low voltage applications; entire fixture switches and dims together
DRVU/DRVD	Driver prewired for non-dimming applications; up and down portions switch separately
DRVU/DIMD	Driver prewired for non-dimming applications; up and down portions switch separately; 0-10V on down portion only
DIMU/DRVD	Up and down portions switch separately; dimming driver prewired for 0-10V low voltage applications on up portion only
DRVDIMU	Entire fixture switches together; dimming driver prewired for 0-10V low voltage applications on up portion only
DRVDIMD	Entire fixture switches together; dimming driver prewired for 0-10V low voltage applications on down portion only
DIM1	1% dimming driver prewired for 0-10V low voltage applications
DIM LINE	Line voltage dimming driver (TRIAC and ELV compatible, 120V only)
DIM TRC	Line voltage dimming driver (TRIAC compatible, 120V or 277V only)
DIM LINEU/DIM LINED	Line voltage switching and line voltage dimming; up and down portions switch separately
DIM LINEU/DRVD	Up and down portions switch separately; line voltage dimming on up portion only
DRVU/DIM LINED	Up and down portions switch separately; line voltage dimming on down portion only



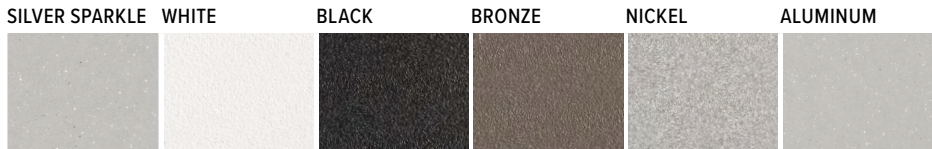
AX2WUD LED 2" Wall Mount Architectural Up/Down

FIXTURE DETAILS

EM/10W REMOTE



FINISH OPTIONS



For custom color, please specify RAL code or a manufacturer code with description. All custom colors other than RAL require two sample swatches, minimum 1" square.

QUICK CONNECT OPTIONS

Note: Quick connect wiring required for row mounting. Length restrictions may apply, consult product builder at hew.com/product-builder.

DESIGNATION	NUMBER OF WIRES (EXCLUDING GROUND)	WIRE COLORS	WIRE COLOR/POWER SUPPLY FACTORY CONNECTIONS	TYPICAL USE
C2B	3	White, Black, Red	White, Black	Alternating Circuits
C2BR	3	White, Black, Red	White, Black, Red	ON/OFF Switching (DRV) or Line Voltage dimming (DIM LINE) when equipped w/EM Power Supply (EM/10W)
C2R	3	White, Black, Red	White, Red	Alternating Circuits
C2BW/RV	5	White, Black, Red, Gray, Green	White, Black/Red, Gray	0-10V 4-wire Low Voltage Dimming (DIM)

