

CATALOG #: _____

TYPE: _____

PROJECT: _____

FEATURES

- Provides 90 minutes of emergency operation
- Ultra-bright, energy-efficient, long-life LEDs in red or green
- Optional tamper-resistant hardware helps discourage unauthorized access to the unit
- Adjustable LED lamp heads provide optimal center-to-center spacing
- Remote capable option available
- Unique dual color LED indicator light provides battery condition alert
- Fully automatic solid-state two rate charger recharges battery in 24 hours
- Removable directional indicators
- Custom message available
- Self-diagnostic option performs monthly, biannual, and annual tests to ensure reliable operation and meets electrical and life safety codes

SPECIFICATIONS

- HOUSING** – 5VA flame retardant, UV stabilized polycarbonate in white, black or gray finish. High-impact resistant, UV stabilized polycarbonate clear lens. Corrosion resistant enclosure with engineering grade silicone gasket.
- ELECTRICAL** – Dual 120/277 voltage. 3.6W (3 LEDs x 1.2 watt) per head. 6V long life, maintenance free, rechargeable NiCd battery.
- MOUNTING** – Die-cast aluminum mounting canopy included for top or end mount. Universal KO pattern on back plate for wall mount. Knockouts provided for conduit feed applications.
- LISTINGS** –
 - UL 924 standard as an emergency light suitable for wet locations (0°C - +50°C).
 - Meets NFPA 101 Life Safety Code, NEC, OSHA, Local and State Codes.
 - Certified to CEC under Title 20 Regulations.
- WARRANTY** – 5-year limited warranty

ORDERING EXAMPLE: EXIT/EM/W SF - R - WHT - OPTIONS - D

ORDERING INFO

SERIES	NUMBER OF FACES	LETTER COLOR	HOUSING COLOR
EXIT/EM/W	SF Single Face	R Red	WHT Industry-standard white
	DF Double Face	G Green	BLK Black
			GRAY Gray with white faceplate

OPTIONS	VOLTAGE
TP Tamper-resistant hardware	D 120V/277V
COPY/SF Custom message, single face ^[1]	
COPY/DF Custom message, double face ^[2]	
CW Internal heater with battery blanket ^[3]	
RC Remote capable ^[4]	
SDT Self-diagnostic test	
PC2 Polycarbonate shield ^[5]	

REMOTE HEADS: WETRHL - GRAY - OPTIONS - MV^[6]

SERIES	HOUSING	HOUSING COLOR	OPTIONS	VOLTAGE
WETRHL Wet location single remote head, 8 LEDs	D Die-cast P Polycarbonate	BLK Black GRAY Gray	SDT For use with self-diagnostic test fixtures	MV Multi-voltage ^[7]
WETDRHL Wet location dual remote head, 8 LEDs				

NOTES

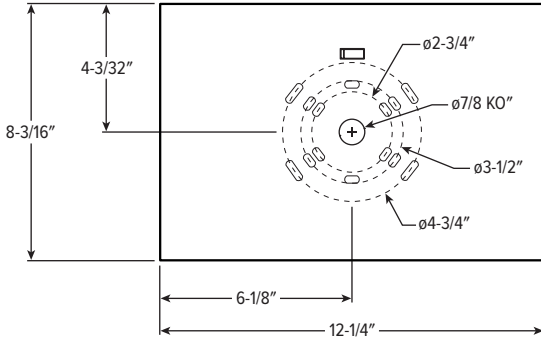
- Consult factory.
- Consult factory.
- For cold temperature applications -20°C - +50°.
- Up to 7.2W.

- Ships separately. See page 2 for OPTIONS DETAILS.
- Optional. Ships separately. See page 2 for REMOTE HEAD DETAILS. Must specify RC option.
- For use with 3.6V, 6V, 9.6V, or 12V power source.

MOUNTING DETAILS

WALL MOUNT BOLT CIRCLE PATTERN

Not to scale.



REMOTE HEAD DETAILS

WETRHL



DIMENSIONS: 4-1/4" x 6-5/8"

WETDRHL



DIMENSIONS: 10-3/8" x 6-3/4"

OPTIONS DETAILS

PC2



DIMENSIONS: 15" x 22" x 7-3/4"