

HS6DR^{LED} 6" MIL-Spec Surgical Downlight – Round

FIXTURE PERFORMANCE DATA

	DISTRIBUTION	WATTAGE	FLUSH LENS TRIM TYPE		REGRESSED LENS TRIM TYPE	
			DELIVERED LUMENS	EFFICACY (lm/W)	DELIVERED LUMENS	EFFICACY (lm/W)
L10	W	12.6	1034	82.1	969	76.9
	M	12.6	1216	96.5	1195	94.8
	N	12.6	1215	96.4	1215	96.4
L15	W	18.8	1529	81.3	1434	76.3
	M	18.8	1798	95.6	1768	94.0
	N	18.8	1797	95.6	1798	95.6
L20	W	23.1	2080	90.0	1950	84.4
	M	23.1	2446	105.9	2404	104.1
	N	23.1	2445	105.8	2445	105.8
L30	W	37.4	3080	82.4	2888	77.2
	M	37.4	3623	96.9	3561	95.2
	N	37.4	3621	96.8	3621	96.8
L40	W	46.5	4058	87.3	3805	81.8
	M	—	—	—	—	—
	N	—	—	—	—	—
L50	W	61.0	5047	82.7	4731	77.6
	M	—	—	—	—	—
	N	—	—	—	—	—
L60	W	76.1	6069	79.8	5689	74.8
	M	—	—	—	—	—
	N	—	—	—	—	—

MULTIPLIER TABLES

	COLOR TEMPERATURE	
	CCT	CONVERSION FACTOR
	80 CRI	2700K
	3000K	0.98
	3500K	1.00
	4000K	1.01
	5000K	1.02

TRIM	
CATALOG NUMBER	CONVERSION FACTOR
AD	0.77
PD	0.77

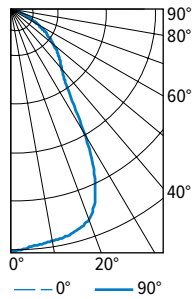
	REGRESSED TRIM FINISH		
	CATALOG NUMBER	CONVERSION FACTOR	
	90 CRI	2700K	0.76
		3000K	0.79
		3500K	0.82
	4000K	0.84	
	5000K	0.88	

REGRESSED TRIM FINISH	
CATALOG NUMBER	CONVERSION FACTOR
WH	1.00
BL	0.79

- Photometrics tested in accordance with IESNA LM-79. Results shown are based on 25°C ambient temperature.
- Wattage shown is based on 120V input.
- Results based on 3500K, 80 CRI, actual lumens may vary +/-5%
- Use multiplier tables to calculate additional options.

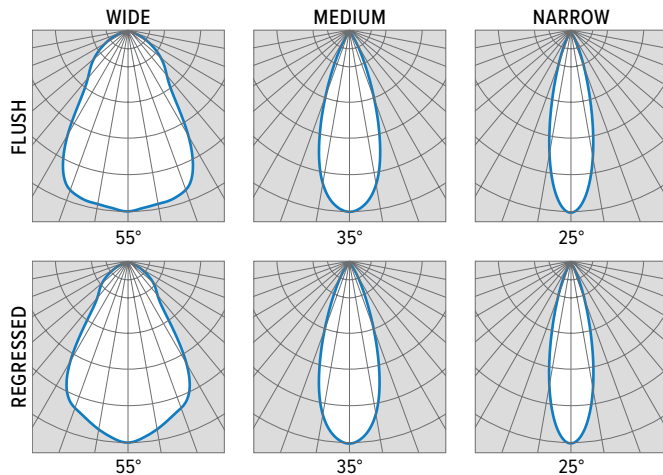
PHOTOMETRY

HS6DR-TL-L60/835-DIM-UNV-LW-OF-WH Total Luminaire Output: 6067 lumens; 76.1 Watts | Efficacy: 80 lm/W | 80 CRI; 3500K CCT



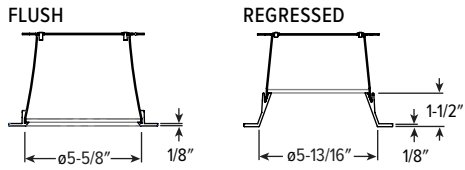
CANDLEPOWER DISTRIBUTION	VERTICAL ANGLE	HORIZONTAL ANGLE	ZONAL LUMENS
		0°	
	0	3859	
	5	3798	361
	15	3708	1045
	25	3197	1436
	35	1633	1065
	45	1093	844
	55	738	660
	65	413	412
	75	183	197
	85	40	48
	90	0	

LUMEN SUMMARY	ZONE	LUMENS	% FIXTURE
	0 - 30	2842	47
	0 - 40	3907	64
	0 - 60	5410	89
	0 - 90	6067	100
	0 - 180	6067	100

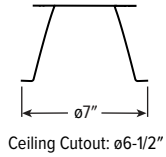


HS6DR^{LED} 6" MIL-Spec Surgical Downlight – Round

TRIM TYPE DETAILS



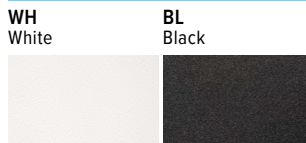
FLANGE TYPE DETAILS



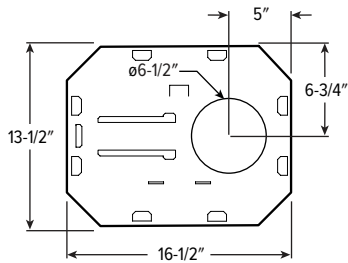
TRIMLOCK DETAILS



REFLECTOR FINISH DETAILS



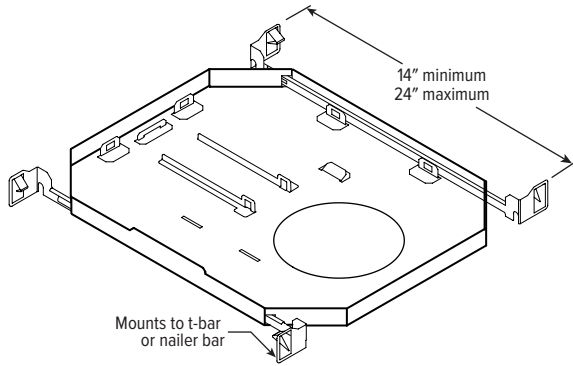
MOUNTING TYPE DETAILS



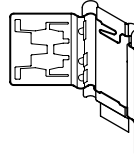
HS6DR^{LED} 6" MIL-Spec Surgical Downlight – Round

MOUNTING HARDWARE DETAILS

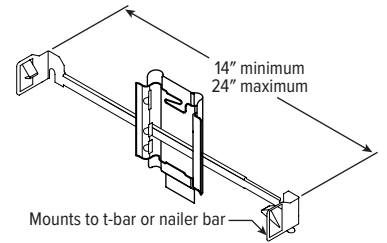
F1 Integral 2-position fixed pan bracket, universal bar hanger included



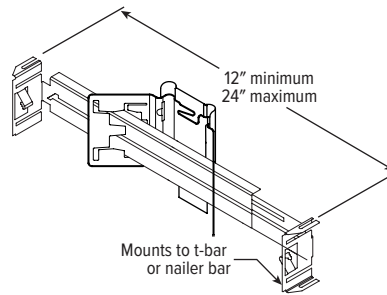
BA1 Adjustable butterfly pan bracket, bar hanger not included



CA1 Adjustable caterpillar pan bracket, universal bar hanger included



BA2 Adjustable butterfly pan bracket, heavy-duty universal bar hanger included



CA2 Adjustable caterpillar pan bracket, t-bar hanger included

