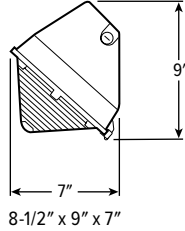


WPS2 LED Small Wall Pack With Glass Lens



CATALOG #: _____

Type: _____

PROJECT: _____

FEATURES

- Designed for quick and easy installation
- 1/2" NPS threaded hub and plugged conduit entry points
- Fully gasketed for wet locations
- Hinged and gasketed borosilicate glass lens

SPECIFICATIONS

- HOUSING** – Die-cast aluminum.
- LENS** – Impact-resistant prismatic borosilicate glass refractor.
- FINISH** – Powder coated on heavy-duty die-cast housing. Dark bronze finish only.
- ELECTRICAL** – Electronic 120-277V or 347/480V dimmable driver. Metal core PCB LED array.
- MOUNTING** – Includes a die-cast mounting plate with locknut, O-ring and weatherproof gasket. Wall mounts directly over a 4" recessed outlet box or accepts 1/2" surface conduit.
- LISTINGS** –
 - cCSAus listed to STD22.2 No. 250.0 certified as luminaire suitable for wet locations. 40°C maximum ambient operating temperature.
- WARRANTY** – 5-year limited warranty.

ORDERING EXAMPLE: WPS2 - L26/850 - OPTIONS - DIM - UNV

ORDERING INFO

SERIES	LUMENS	CRI	CCT	OPTIONS	DRIVER
WPS2 ^[1]	L26 2,600lm	8 80	50 5000K	SF Single fuse ^[2] DF Double fuse ^[3] SP2 2.5kV surge protection PC Factory-installed photocell ^[4]	DIM Dimming driver prewired for 0-10V low voltage applications

VOLTAGE

120	120V
208	208V
240	240V
277	277V
UNV	120-277V
347	347V
480	480V

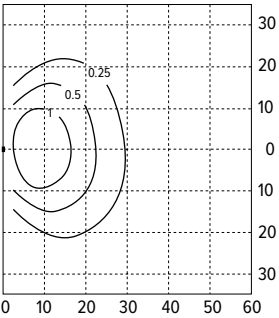
NOTES

- ¹ This fixture does not comply with Buy American/ARRA and similar regulatory programs.
- ² 120V or 277V only; must specify voltage.
- ³ 208V or 240V only; must specify voltage.

- ⁴ 120V, 208V and 277V only, must specify voltage.

WPS2 LED Small Wall Pack With Glass Lens

FOOTCANDLE ESTIMATOR & DISTRIBUTION



Footcandle calculations based on standard building reflectance of .10 with a ground reflectance of .0 and a light loss factor of .90.

Fixture installed at 12' mounting height.

- Wattage: 28
- Efficacy: 94 lm/w
- Flux: 2658 lm
- CRI: 83
- CCT: 5182
- BUG Ratings: B0-U4-G3